

# Medication Incident Guide

**This process should be used as a guide in the event of a medication related incident such as: missed dose, early or late dose, under or overdose.**

V3

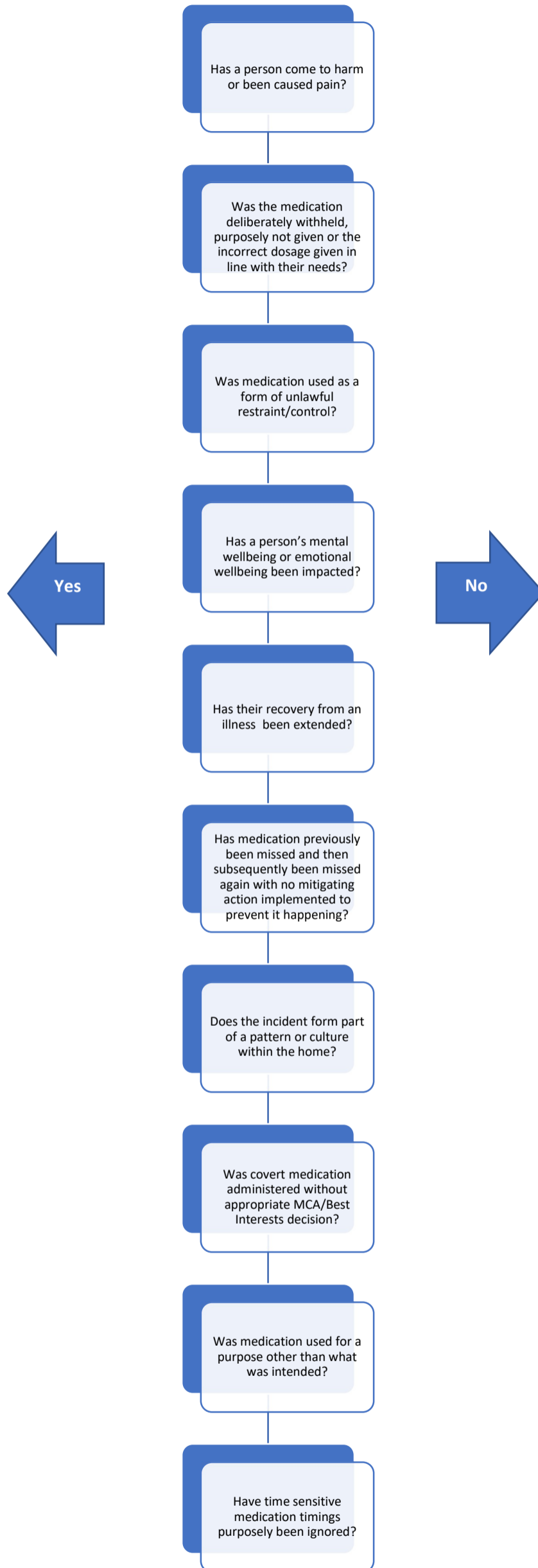


This document provides an overview of what you can do in the event of a medication issue and does not constitute clinical guidance. Organisations who created this form take no responsibility for the subsequent non-compliance of any regulations, audits or assurance processes should this document directly be implemented.

If there is any doubt as to whether a safeguarding concern should be raised, staff should speak to their safeguarding lead or contact the Safeguarding Contact Centre for further advice.

# Safeguarding Guide

Log as incident and raise Safeguarding Referral



Log as incident

This document provides an overview of what you can do in the event of a medication issue and does not constitute clinical guidance. Organisations who created this form take no responsibility for the subsequent non-compliance of any regulations, audits or assurance processes should this document directly be implemented.

If there is any doubt as to whether a safeguarding concern should be raised, staff should speak to their safeguarding lead or contact the Safeguarding Contact Centre for further advice.