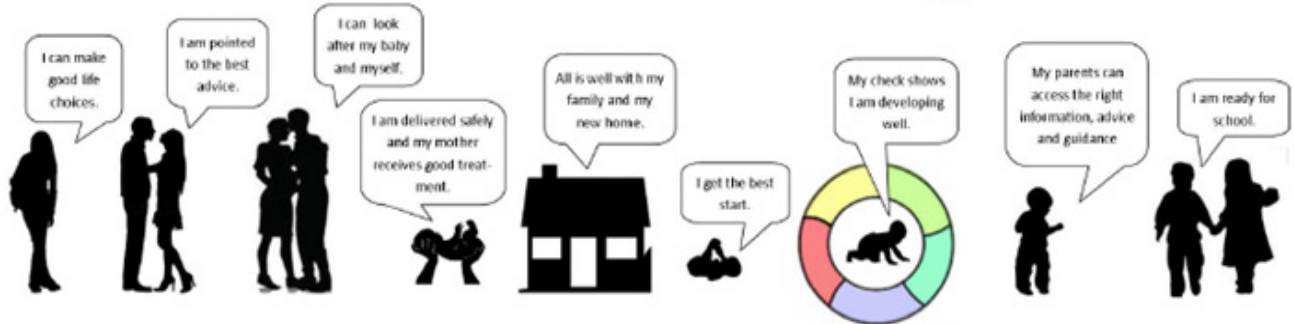


# CANNOCK DISTRICT PROFILE

TEENAGER    CONCEPTION    PREGNANCY    BIRTH    HOME    0-6 WEEKS    1 YEAR    2 YEARS    TODDLER (3-4 YEARS)    FIRST DAY OF SCHOOL

★ PHSE   ★ CONTRACEPTIVE ADVICE   ★ HEALTH PREGNANCY CHECK   ★ 14 DAY NEW BIRTH VISIT   ★ 6 WEEK CHECK   ★ IMMUNISATION   ★ 12 MONTH AGES & STAGES QUESTIONNAIRE / THINK 2   ★ NURSERY EDUCATION FUND (3-4 ENTITLEMENT)   ★ EYFS KS1



DECEMBER 2016

## CONTENTS PAGE

<b>Introduction</b> .....	<b>3</b>
<b>Summary</b> .....	<b>4</b>
<b>Population</b>	
Ward Boundaries .....	6
Under 5 Population.....	7
Household Composition .....	8
Worklessness.....	9
Children’s Social Care Groups.....	10
Building Resilient Families and Communities (BRFC) .....	11
Early Years Reach.....	13
Children Centre Attendance Map.....	15
<b>Conception</b>	
Under 18 Conception (District map).....	17
<b>Birth</b>	
General Fertility Rates .....	18
Low Birthweight .....	19
<b>0-6 Weeks</b>	
Breastfeeding Prevalence.....	20
<b>1 Year and 2 Year</b>	
Think2 .....	21
Sufficiency.....	22
<b>1 Toddler</b>	
Sufficiency.....	23
<b>First Day at School</b>	
Childhood Obesity.....	24
Early Years Foundation Stage Profile .....	26

## Contact for Further Information

Report compiled by Operational Intelligence & Performance Team  
 Claire Makinson - Performance Manager, 01785 277067  
 Farhana Patel - Performance Officer, 01785 277798

## INTRODUCTION

The purpose of the Early Years District Profile is to bring together a wide range of indicators for each district. It provides the commissioners with a robust evidence base across a range of health and wellbeing issues to help identify priority areas to target and place services in appropriate areas.

The report pulls together information from various sources to present a picture of the health and wellbeing of children aged 0-4, following through the Best Start Pathway.

The data is presented and displayed at Ward Level with comparisons made with Staffordshire and England. Information used in the report is the latest available at the time of writing.

Health and social needs are complex and it is unlikely that there will be a single factor which is responsible for the particular situation in each local area. Therefore, it is important that no single item of information is treated in isolation. Instead the various pieces of data and evidence should be used together to give a better picture of the needs of children and young people in the local community.

We aim to produce this annually with the next one being due November 2016 to support the Districts with their Local Authority annual conversations.

## SUMMARY

Cannock Chase district comprises of 15 wards, with 19 Lower Super Output Areas of 0-30% deprivation spread across 9 wards. The population of children aged 0-4 has seen a drop in the majority of wards between 2013 and 2015 with 11 wards showing a decrease and 4 wards showing an increase. Overall the population of children aged 0-4 within Cannock Chase has decreased by 0.2 percentage points from 5,785 to 5,582 between 2013 and 2015; this is in line with the slight reduction shown across Staffordshire.

For families with dependents, married couples are the largest group in the district accounting for 16.2% of households; the proportion of households that are lone parents varies across the wards from 4.7% in Rawnsley to 9.1% Cannock North giving an average of 6.6% of all households in Cannock Chase.

The numbers of children living in out of work benefit claimant households has seen a 41% drop between 2012 and 2015, however only 9 wards have seen a decrease and 6 wards have seen an increase in children under the age of 5. Cannock East and Cannock West have both seen a significant reduction of over 70%.

In terms of the Children's Social Care groups, the largest proportion of Children in Need are within the Cannock East and Cannock North wards. Cannock North also has the largest proportion of Children Subject of a Child Protection Plan; Cannock East, Cannock South and Hednesford North all have similar proportions. Etching Hill & The Heath has the highest proportion of children who are Looked After; there are many wards across Cannock Chase with children from the 3 social care groups but due to the low numbers the data has had to be suppressed.

The Early Years Reach across Cannock Chase has shown an improvement of 15.2 percentage points between 2014/15 and 2015/16 equating to 870 additional children aged 0-4. All the wards have shown an improvement in their Reach with Cannock East, Cannock South and Hednesford North increasing their Reach by over 20 percentage points. All of the 9 wards with areas of 0-30% deprivation saw an increase in the Reach, most noticeably in Cannock South, with an increase of 34.4 percentage points. Etching Hill & The Heath saw the smallest increase with 5.4 percentage points; this gives Cannock Chase a Reach figure of 71.8%, a 23.8 percentage point increase from 2014/15.

## SUMMARY CONT'D

Attendance at Children Centre activities in Cannock Chase shows the majority of attendees are from the local areas surrounding the centre and the community venues. Attendees are also seen to be travelling from other Districts, primarily Stafford, Lichfield and South Staffordshire.; there have also been many families travelling from outside of Staffordshire.

The general fertility rates across Cannock Chase are statistically lower than England at 60.9 per 1,000 compared to 63.2 per 1,000 for England and 57.8 per 1,000 for Staffordshire. Cannock South is the only ward with rates higher than England at 70.7 per 1,000. 5 out of the 15 wards have rates lower than England, with the rates for the remaining wards similar.

7% of babies born in Cannock Chase are born with a low birthweight, which is statistically similar to both the Staffordshire and England average of 7.2% and 7.4% respectively: this is a marginal decrease from 2011/2013. The proportion of babies who are born with a low birthweight ranges from 4.3% in Western Springs to 9.5% in Heath Hayes and Wimblebury.

Data as at Summer 2016 shows the take up of Think2 childcare places is 79% in Cannock Chase. In terms of sufficiency for Think2 places, there is a vacancy rate of 30%; this is comparable with the vacancy rate for all 2 years olds at 25%.

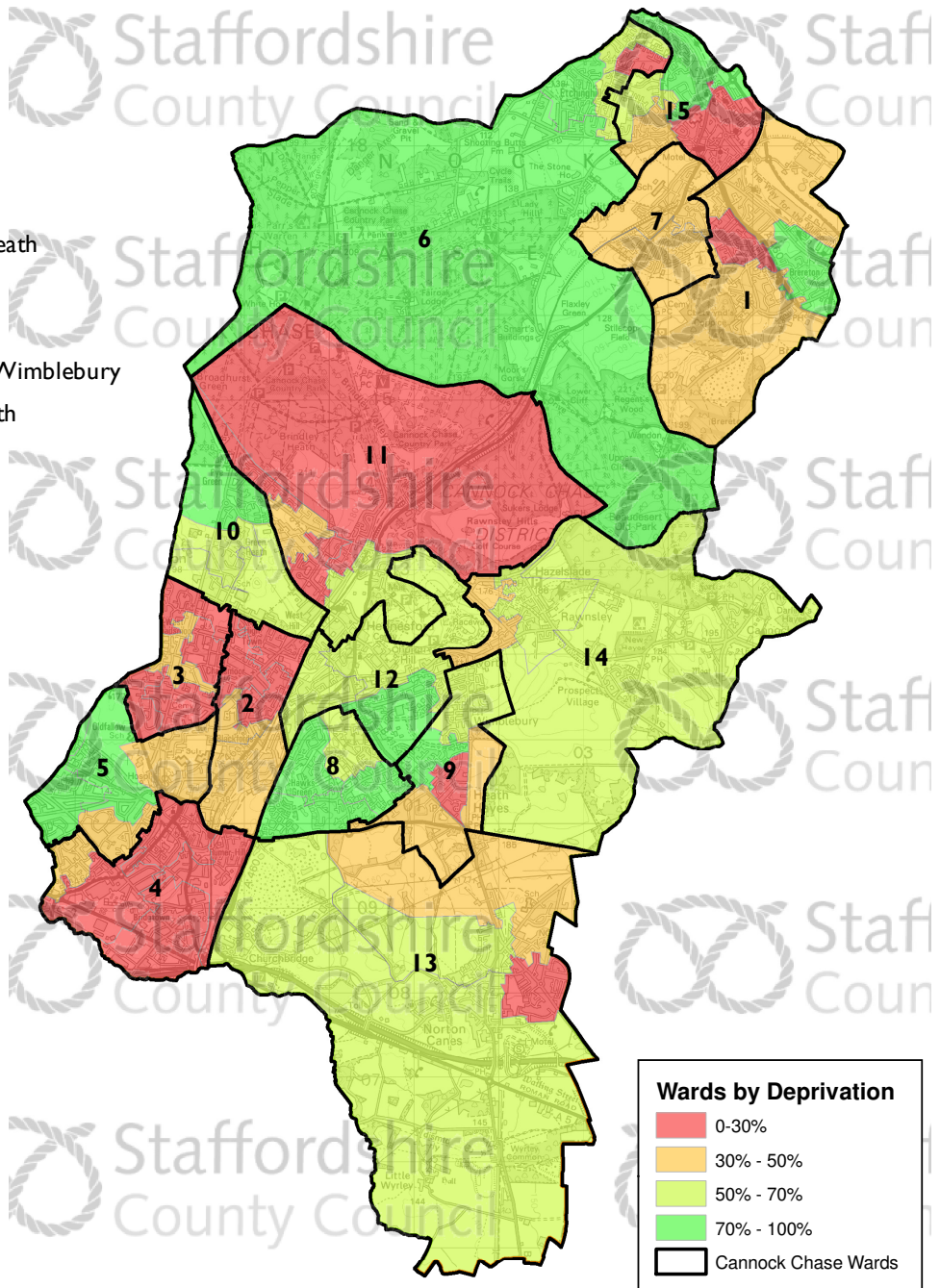
The proportion of children in Reception class with excess weight is statistically higher in Cannock Chase than the England average, this is the case in 4 wards and is reflective of the fact that 7 wards have shown an increase in the proportion of children with excess weight at this age. Cannock South and Etching Hill & The Heath wards have seen a decrease in excess weight; however the rates for both wards are still higher than England. Children of the same age group who are classed as obese show a slight improvement from 2010-2013, however at 10.9% this is still higher than the England average of 9.5%. The highest rates of obesity are in Cannock North and Hednesford Green Heath even though they have seen a marginal decrease from 2010-2013.

The proportion of children in Cannock Chase with a Good Level of Development at the Early Years Foundation Stage is similar to the Staffordshire average of 73.8%. The Good Level of Development rates vary across the wards from 62.7% in Hagley to 79.5% in Hednesford Green Heath. Overall girls are performing significantly better than boys apart from in Norton Canes where 64% of both boys and girls achieved a Good Level of Development.

### WARD BOUNDARIES

#### Ward Boundaries

- 1 Brereton and Ravenhill
- 2 Cannock East
- 3 Cannock North
- 4 Cannock South
- 5 Cannock West
- 6 Etching Hill and The Heath
- 7 Hagley
- 8 Hawks Green
- 9 Heath Hayes East and Wimblebury
- 10 Hednesford Green Heath
- 11 Hednesford North
- 12 Hednesford South
- 13 Norton Canes
- 14 Rawnsley
- 15 Western Springs



This product contains mapping data licensed from Ordnance Survey with the permission of the Controller of Her Majesty's Stationary Office©

Crown Copyright and/or database right 2015. All rights reserved.  
Licence Number 1 000 19422

### UNDER 5 POPULATION

#### Proportion of children aged 0-4 , 2013 - 2015

Ward	2013			2014			2015		
	Total Population	Total under 5	Percentage under 5	Total Population	Total under 5	Percentage under 5	Total Population	Total under 5	Percentage under 5
Brereton and Ravenhill	6,742	451	6.7%	6,845	448	6.5%	6,835	420	6.1%
Cannock East	6,888	415	6.0%	6,850	393	5.7%	6,866	408	5.9%
Cannock North	7,498	544	7.3%	7,638	540	7.1%	7,707	554	7.2%
Cannock South	7,880	527	6.7%	8,033	579	7.2%	8,143	583	7.2%
Cannock West	7,023	322	4.6%	7,073	324	4.6%	7,059	304	4.3%
Etching Hill and The Heath	6,678	324	4.9%	6,710	349	5.2%	6,615	334	5.0%
Hagley	4,667	325	7.0%	4,597	308	6.7%	4,630	279	6.0%
Hawks Green	7,750	550	7.1%	7,798	537	6.9%	7,747	491	6.3%
Heath Hayes East and Wimblebury	6,376	341	5.3%	6,408	321	5.0%	6,340	310	4.9%
Hednesford Green Heath	4,961	235	4.7%	4,987	227	4.6%	4,944	216	4.4%
Hednesford North	7,083	426	6.0%	7,090	420	5.9%	7,135	434	6.1%
Hednesford South	5,318	249	4.7%	5,291	240	4.5%	5,301	259	4.9%
Norton Canes	7,432	393	5.3%	7,322	358	4.9%	7,363	372	5.1%
Rawnsley	4,954	290	5.9%	4,970	275	5.5%	4,906	253	5.2%
Western Springs	6,869	393	5.7%	6,937	392	5.7%	6,944	365	5.3%
<b>Cannock Chase</b>	<b>98,119</b>	<b>5,785</b>	<b>5.9%</b>	<b>100,563</b>	<b>5,711</b>	<b>5.7%</b>	<b>98,535</b>	<b>5,582</b>	<b>5.7%</b>
<b>Staffordshire</b>	<b>857,007</b>	<b>46,099</b>	<b>5.4%</b>	<b>860,165</b>	<b>45,619</b>	<b>5.3%</b>	<b>862,562</b>	<b>45,344</b>	<b>5.3%</b>
<b>England</b>	<b>56,948,229</b>	<b>3,592,907</b>	<b>6.3%</b>	<b>54,316,618</b>	<b>3,430,957</b>	<b>6.3%</b>	<b>54,779,872</b>	<b>3,425,796</b>	<b>6.3%</b>

### HOUSEHOLD COMPOSITION

#### Household Composition - Families with Dependants, 2011

Ward	Number of all Households	Married Couple		Cohabiting Couple		Lone Parent		Same-Sex Civil Partnership Couple		Other Households	
		Number of families	% of all households	Number of families	% of all households	Number of families	% of all households	Number of families	% of all households	Number of families	% of all households
Brereton and Ravenhill	2,743	374	13.6%	173	6.3%	205	7.5%	<10	-	70	2.6%
Cannock East	3,182	339	10.7%	178	5.6%	252	7.9%	<10	-	62	1.9%
Cannock North	2,992	390	13.0%	232	7.8%	272	9.1%	<10	-	81	2.7%
Cannock South	3,461	396	11.4%	221	6.4%	285	8.2%	<10	-	69	2.0%
Cannock West	3,055	443	14.5%	135	4.4%	122	4.0%	<10	-	36	1.2%
Etching Hill and The Heath	2,720	459	16.9%	157	5.8%	166	6.1%	<10	-	74	2.7%
Hagley	1,836	346	18.8%	141	7.7%	151	8.2%	<10	-	43	2.3%
Hawks Green	2,797	782	28.0%	206	7.4%	175	6.3%	<10	-	46	1.6%
Heath Hayes East and Wimblebury	2,626	543	20.7%	140	5.3%	153	5.8%	<10	-	50	1.9%
Hednesford Green Heath	2,038	381	18.7%	111	5.4%	101	5.0%	<10	-	39	1.9%
Hednesford North	3,094	416	13.4%	169	5.5%	230	7.4%	<10	-	54	1.7%
Hednesford South	2,145	442	20.6%	88	4.1%	102	4.8%	<10	-	43	2.0%
Norton Canes	3,090	507	16.4%	168	5.4%	197	6.4%	<10	-	69	2.2%
Rawsley	1,973	371	18.8%	110	5.6%	93	4.7%	<10	-	45	2.3%
Western Springs	2,912	385	13.2%	173	5.9%	165	5.7%	<10	-	59	2.0%
<b>Cannock Chase</b>	<b>40,664</b>	<b>6,574</b>	<b>16.2%</b>	<b>2,402</b>	<b>5.9%</b>	<b>2,669</b>	<b>6.6%</b>	<b>&lt;10</b>	<b>-</b>	<b>840</b>	<b>2.1%</b>
<b>Staffordshire</b>	<b>355,263</b>	<b>56,756</b>	<b>16.0%</b>	<b>16,242</b>	<b>4.6%</b>	<b>21,016</b>	<b>5.9%</b>	<b>30</b>	<b>0.01%</b>	<b>6,833</b>	<b>1.9%</b>
<b>England</b>	<b>22,063,368</b>	<b>3,373,005</b>	<b>15.3%</b>	<b>890,780</b>	<b>4.0%</b>	<b>1,573,255</b>	<b>7.1%</b>	<b>2,885</b>	<b>0.01%</b>	<b>584,016</b>	<b>2.6%</b>

Remainder of the population is made up of households with no children



### WORKLESSNESS

#### Under 5 population living in out-of-work benefit claimant households, 2012-2015

Ward	2012		2013		2014		2015	
	No. of Households	No. of children aged 0-4	No. of Households	No. of children aged 0-4	No. of Households	No. of children aged 0-4	No. of Households	No. of children aged 0-4
Brereton and Ravenhill	125	70	175	130	150	115	150	110
Cannock East	620	430	175	120	155	110	160	110
Cannock North	155	80	280	200	265	175	255	180
Cannock South	445	335	230	145	225	150	215	150
Cannock West	385	310	80	60	80	50	65	45
Etching Hill and The Heath	40	10	140	80	140	95	115	70
Hagley	195	100	130	85	115	80	110	60
Hawks Green	90	25	90	55	85	55	70	45
Heath Hayes East and Wimblebury	145	75	105	60	80	50	80	50
Hednesford Green Heath	100	45	70	35	50	30	45	25
Hednesford North	65	30	180	120	160	110	145	100
Hednesford South	150	100	35	20	40	20	30	20
Norton Canes	135	65	140	85	120	75	115	70
Rawnsley	165	90	70	45	60	30	55	30
Western Springs	165	110	125	90	90	70	75	45
<b>Cannock Chase</b>	<b>2,980</b>	<b>1,875</b>	<b>2,025</b>	<b>1,330</b>	<b>1,815</b>	<b>1,215</b>	<b>1,685</b>	<b>1,110</b>
<b>Staffordshire</b>	<b>14,790</b>	<b>9,235</b>	<b>12,875</b>	<b>8,050</b>	<b>11,720</b>	<b>7,500</b>	<b>10,735</b>	<b>6,605</b>
<b>England</b>	<b>1,340,420</b>	<b>839,965</b>	<b>1,268,335</b>	<b>805,100</b>	<b>1,161,325</b>	<b>735,420</b>	<b>1,066,540</b>	<b>669,360</b>

### CHILDREN'S SOCIAL CARE GROUPS

#### Children's Social Care Groups 2015/2016

Ward	Children aged 0-4			Percentage children aged 0-4		
	CIN	CP	LAC	CIN	CP	LAC
Brereton and Ravenhill	8		s	4%		10%
Cannock East	27	8		14%	15%	
Cannock North	30	10	s	16%	19%	10%
Cannock South	23	8	s	12%	15%	5%
Cannock West	s			1%		
Etching Hill and The Heath	12	s	5	6%	2%	24%
Hagley	5	s	s	3%	2%	10%
Hawks Green	11	s		6%	8%	
Heath Hayes East and Wimblebury	11	s		6%	4%	
Hednesford Green Heath	s	s		3%	4%	
Hednesford North	22	8	s	12%	15%	5%
Hednesford South	s	s		2%	4%	
Norton Canes	18	s	s	10%	8%	10%
Rawsley	s		s	2%		10%
Western Springs	9	s	s	5%	4%	19%
<b>Cannock Chase</b>	<b>189</b>	<b>52</b>	<b>21</b>	<b>100%</b>	<b>100%</b>	<b>100%</b>

### BUILDING RESILIENT FAMILIES AND COMMUNITIES (BRFC)

#### Phase 2 Year 1 Eligible Families 2015/16

Ward	Eligible Families	Count of people	Eligible families with children aged 0-4	Count of Children aged 0-4	Percentage of families with children aged 0-4
Brereton and Ravenhill	20	75	6	8	30.0%
Cannock East	17	69	6	12	35.3%
Cannock North	45	194	19	30	42.2%
Cannock South	30	118	12	16	40.0%
Cannock West	2	8	1	1	50.0%
Etching Hill and The Heath	11	40	5	7	45.5%
Hagley	5	20	1	3	20.0%
Hawks Green	10	34	4	4	40.0%
Heath Hayes East and Wimblebury	8	35	4	6	50.0%
Hednesford Green Heath	2	5	0	0	0.0%
Hednesford North	11	44	4	6	36.4%
Hednesford South	4	12	2	3	50.0%
Norton Canes	7	22	4	4	57.1%
Rawnsley	5	21	4	5	80.0%
Western Springs	12	47	6	10	50.0%
<b>Cannock Chase</b>	<b>189</b>	<b>744</b>	<b>78</b>	<b>115</b>	<b>41.3%</b>

### BUILDING RESILIENT FAMILIES AND COMMUNITIES (BRFC)

#### Phase 2 Year 2 Eligible Families 2016/17 (Apr - Sept)

Ward	Eligible Families	Count of people	Eligible families with children aged 0-4	Count of Children aged 0-4	Percentage of families with children aged 0-4
Brereton and Ravenhill	13	53	1	1	7.7%
Cannock East	13	52	6	10	46.2%
Cannock North	11	48	4	5	36.4%
Cannock South	11	45	4	4	36.4%
Cannock West	7	33	2	2	28.6%
Etching Hill and The Heath	8	38	3	3	37.5%
Hagley	14	60	2	2	14.3%
Hawks Green	7	29	2	3	28.6%
Heath Hayes East and Wimblebury	9	39	2	3	22.2%
Hednesford Green Heath	1	1	0	0	0.0%
Hednesford North	14	68	3	5	21.4%
Hednesford South	6	25	1	1	16.7%
Norton Canes	11	51	5	6	45.5%
Rawnsley	6	35	3	5	50.0%
Western Springs	11	52	4	5	36.4%
<b>Cannock Chase</b>	<b>142</b>	<b>629</b>	<b>42</b>	<b>55</b>	<b>29.6%</b>

## POPULATION

### EARLY YEARS REACH

#### Early Years Reach, 2014/15 and 2015/16

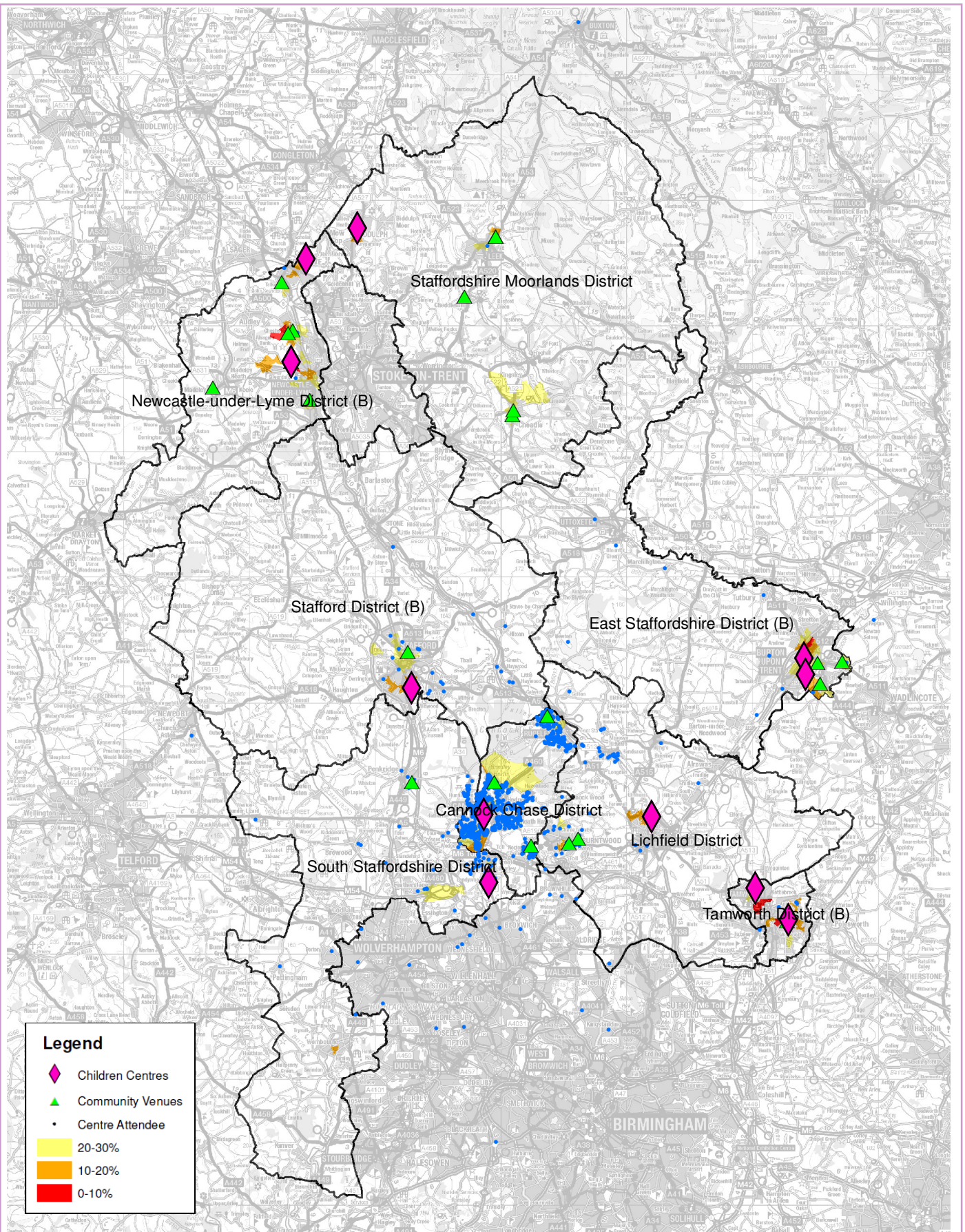
Ward	2014 Population (All)	2014 Population (Age 0-4)	2014/2015		2015/2016	
			Reach Population	% Reach Population (Age 0-4)	Reach Population	% Reach Population (Age 0-4)
Brereton and Ravenhill	6,845	448	201	44.9%	250	55.8%
Cannock East	6,850	393	210	53.4%	302	76.8%
Cannock North	7,638	540	292	54.1%	388	71.9%
Cannock South	8,033	579	256	44.2%	411	71.0%
Cannock West	7,073	324	154	47.5%	198	61.1%
Etching Hill and The Heath	6,710	349	178	51.0%	212	60.7%
Hagley	4,597	308	144	46.8%	159	51.6%
Hawks Green	7,798	537	221	41.2%	279	52.0%
Heath Hayes East and Wimblebury	6,408	321	163	50.8%	195	60.7%
Hednesford Green Heath	4,987	227	104	45.8%	132	58.1%
Hednesford North	7,090	420	212	50.5%	303	72.1%
Hednesford South	5,291	240	110	45.8%	149	62.1%
Norton Canes	7,322	358	163	45.5%	203	56.7%
Rawnsley	4,970	275	111	40.4%	153	55.6%
Western Springs	6,937	392	183	46.7%	238	60.7%
<b>Cannock Chase</b>	<b>98,549</b>	<b>5,711</b>	<b>2,702</b>	<b>47.3%</b>	<b>3,572</b>	<b>62.5%</b>

### EARLY YEARS REACH

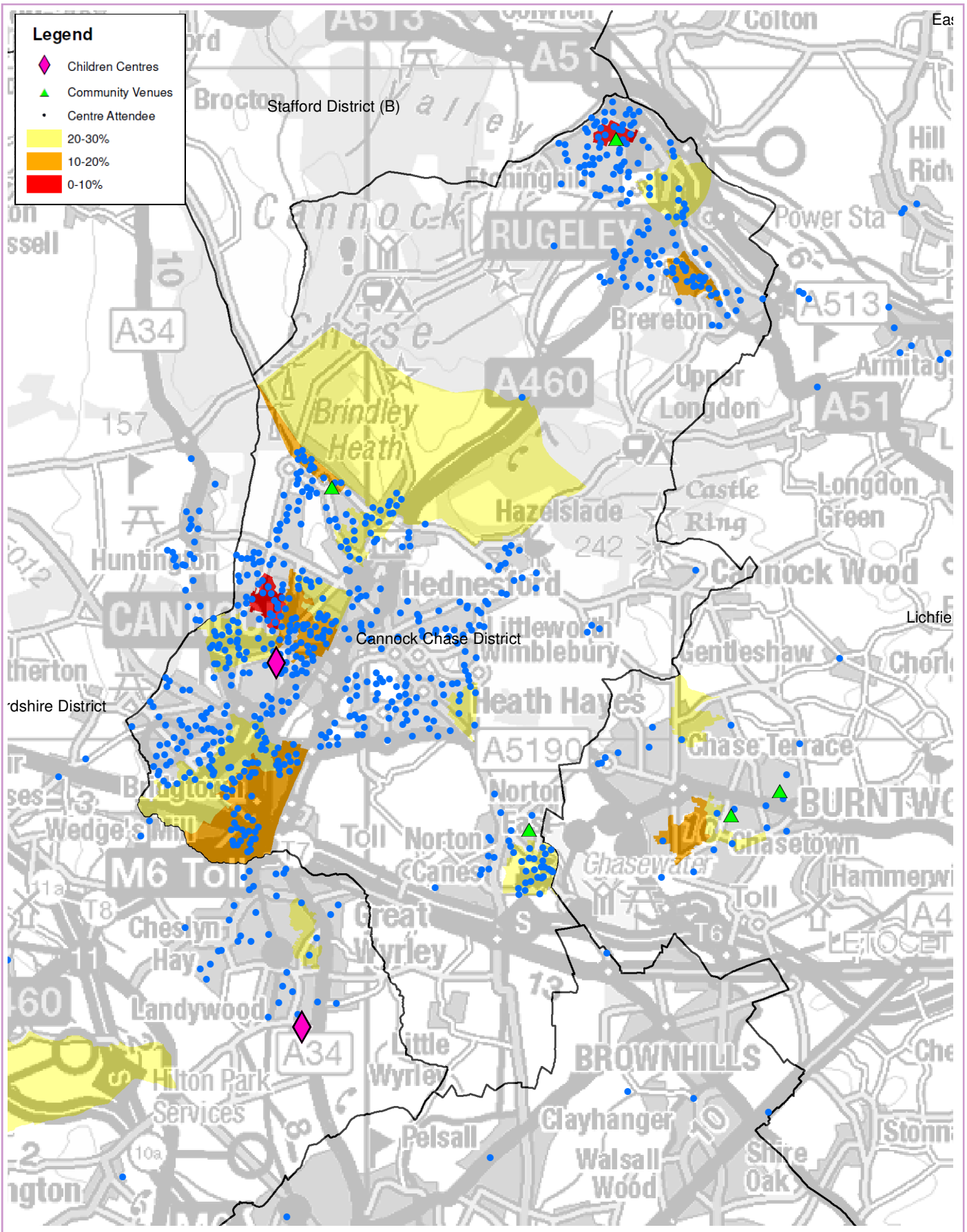
#### Early Years Reach 0-30%, 2014/15 and 2015/16

Ward	2014/2015		2015/2016	
	% 0-4 Reach	% Reach 0-30% Deprivation	% 0-4 Reach	% Reach 0-30% Deprivation
Brereton and Ravenhill	44.9%	16.7%	55.8%	24.8%
Cannock East	53.4%	34.1%	76.8%	47.6%
Cannock North	54.1%	45.6%	71.9%	63.9%
Cannock South	44.2%	30.4%	71.0%	64.8%
Etching Hill and The Heath	51.0%	18.1%	60.7%	23.5%
Hagley	46.8%	27.3%		
Heath Hayes East and Wimblebury			60.7%	10.9%
Hednesford North	50.5%	18.6%	72.1%	46.2%
Norton Canes	45.5%	26.8%	56.7%	33.8%
Western Springs			60.7%	12.2%
<b>Cannock Chase</b>	<b>42.2%</b>	<b>48.0%</b>	<b>57.6%</b>	<b>71.8%</b>

### CHILDREN CENTRE ATTENDANCE 2015/2016



### CHILDREN CENTRE ATTENDANCE 2015/2016





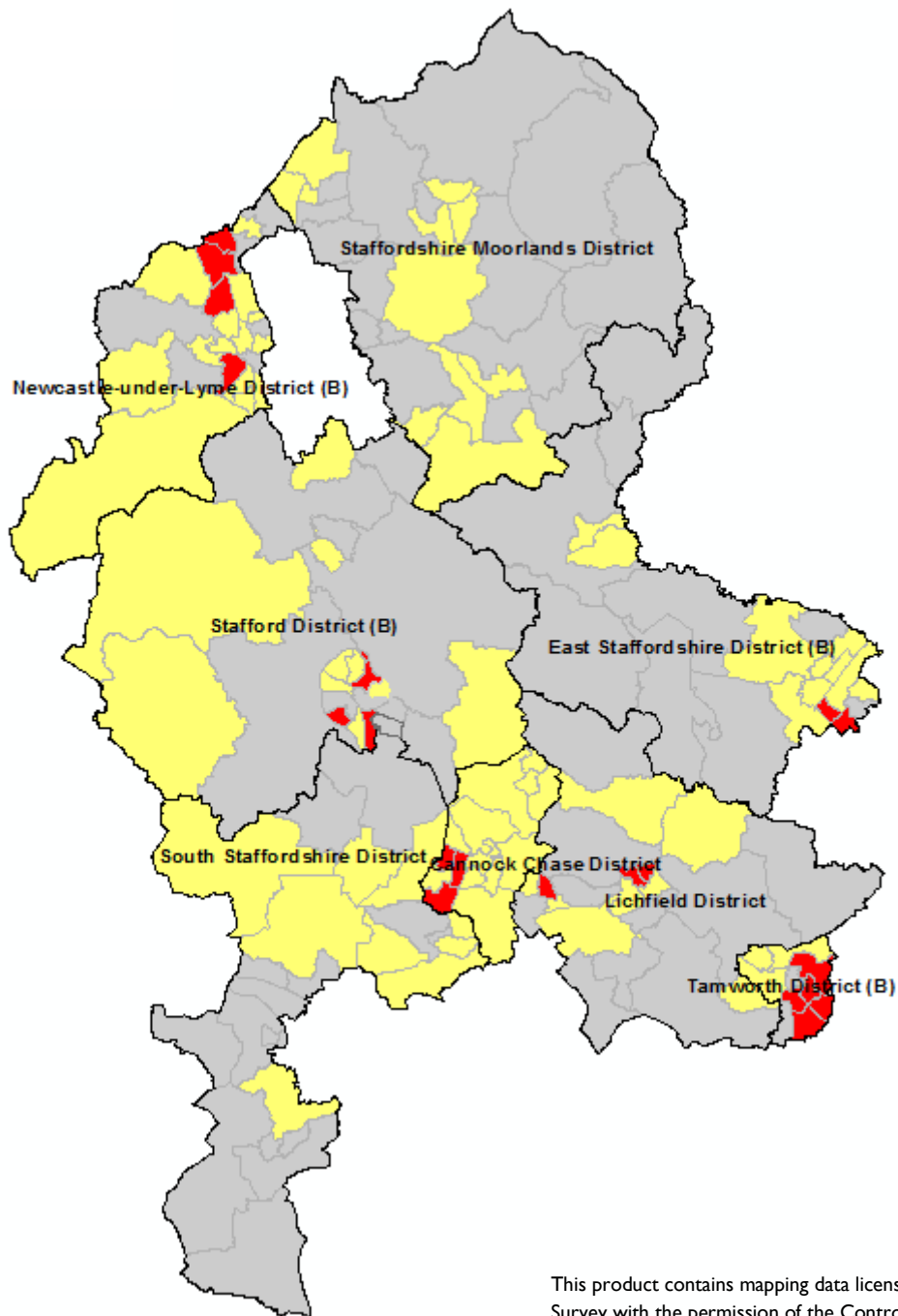
### UNDER-18 CONCEPTIONS

#### Under-18 Teenage Conceptions, 2012-2014

**Wards**

**Statistical Difference to England**

- Higher
- Similar
- Suppressed



This product contains mapping data licensed from Ordnance Survey with the permission of the Controller of Her Majesty's Stationary Office©

Crown Copyright and/or database right 2015. All rights reserved. Licence Number 100019422

### GENERAL FERTILITY RATES

#### General Fertility Rates per 1,000 women aged 15-44, 2011-2014

Ward	2011-2013	2012-2014	Statistical Difference to England
Brereton and Ravenhill	65.1	67.8	Similar
Cannock East	67.5	71.3	Similar
Cannock North	66.2	67.0	Similar
Cannock South	67.8	70.7	Higher
Cannock West	57.2	58.9	Similar
Etching Hill and The Heath	55.6	60.2	Similar
Hagley	59.0	59.8	Similar
Hawks Green	59.4	57.0	Similar
Heath Hayes East and Wimblebury	56.0	53.1	Lower
Hednesford Green Heath	43.6	56.6	Lower
Hednesford North	71.7	67.7	Similar
Hednesford South	52.4	51.1	Lower
Norton Canes	57.5	54.0	Lower
Rawnsley	56.1	52.8	Lower
Western Springs	65.4	64.9	Similar
<b>Cannock Chase</b>	<b>60.8</b>	<b>60.9</b>	<b>Lower</b>
<b>Staffordshire</b>	<b>57.9</b>	<b>57.8</b>	<b>Lower</b>
<b>England</b>	<b>63.8</b>	<b>63.2</b>	

### LOW BIRTHWEIGHT

#### Low Birthweight Babies (under 2,500g) 2011-2014

Ward	2011-2013	2012-2014	Statistical Difference to England
Brereton and Ravenhill	7.7%	6.9%	Similar
Cannock East	7.6%	8.2%	Similar
Cannock North	9.1%	7.5%	Similar
Cannock South	5.9%	5.9%	Similar
Cannock West	8.8%	7.2%	Similar
Etching Hill and The Heath	6.8%	4.4%	Similar
Hagley	9.0%	8.0%	Similar
Hawks Green	4.6%	5.5%	Similar
Heath Hayes East and Wimblebury	6.9%	9.5%	Similar
Hednesford Green Heath	9.0%	8.1%	Similar
Hednesford North	8.2%	8.5%	Similar
Hednesford South	6.2%	8.4%	Similar
Norton Canes	5.9%	6.5%	Similar
Rawnsley	7.1%	6.9%	Similar
Western Springs	6.4%	4.3%	Similar
<b>Cannock Chase</b>	<b>7.2%</b>	<b>7.0%</b>	<b>Similar</b>
<b>Staffordshire</b>	<b>7.3%</b>	<b>7.2%</b>	<b>Similar</b>
<b>England</b>	<b>7.4%</b>	<b>7.3%</b>	

### BREASTFEEDING PREVALENCE

#### Breastfeeding Prevalence (6-8 weeks) 2012-2015

Ward	2012-2013	2014-2015	Statistical Difference to England
Brereton and Ravenhill	20.9%	23.7%	Lower
Cannock East	17.3%	18.9%	Lower
Cannock North	17.5%	19.8%	Lower
Cannock South	20.2%	22.8%	Lower
Cannock West	32.1%	17.0%	Lower
Etching Hill and The Heath	18.4%	34.6%	Similar
Hagley	19.4%	31.4%	Similar
Hawks Green	31.5%	30.1%	Lower
Heath Hayes East and Wimblebury	24.4%	25.8%	Lower
Hednesford Green Heath	31.0%	27.5%	Lower
Hednesford North	21.7%	23.7%	Lower
Hednesford South	23.9%	31.6%	Similar
Norton Canes	20.3%	29.7%	Lower
Rawnsley	33.9%	27.5%	Lower
Western Springs	23.9%	30.3%	Lower
<b>Cannock Chase</b>	<b>23.3%</b>	<b>25.7%</b>	<b>Lower</b>
<b>Staffordshire</b>	<b>32.7%</b>	<b>33.5%</b>	<b>Lower</b>
<b>England</b>	<b>47.1%</b>	<b>43.9%</b>	

### THINK2

#### Think2 Childcare Places, Summer 2016

Ward	Eligible Families	Take up by child's address		Take up by address	
		Number	Percentage	Number	Percentage
Brereton and Ravenhill	32	23	72%	18	56%
Cannock East	32	31	97%	39	122%
Cannock North	61	50	82%	32	52%
Cannock South	74	52	70%	61	82%
Cannock West	18	14	78%	25	139%
Churchbridge	2	1	50%	14	700%
Etching Hill and The Heath	34	25	74%	14	41%
Hagley	24	18	75%	7	29%
Hawks Green	19	16	84%	5	26%
Heath Hayes East and Wimblebury	21	18	86%	18	86%
Hednesford Green	12	12	100%	25	208%
Hednesford North	51	41	80%	37	73%
Hednesford South	8	9	113%	2	25%
Norton Canes	30	21	70%	18	60%
Rawsley	22	17	77%	7	32%
Western Springs	21	15	71%	32	152%
<b>Cannock Chase</b>	<b>461</b>	<b>363</b>	<b>79%</b>	<b>354</b>	<b>77%</b>

### SUFFICIENCY

#### Childcare Sufficiency 0-2 years in PVI sector, Summer 2016

Ward	0-2 years				2 years			
	Number of children in district	Places	Vacancies	Vacancies %	Number of children in district	Places	Vacancies	Vacancies %
Brereton and Ravenhill	181	15	2	13%	76	23	8	35%
Cannock East	160	0	0	-	73	27	12	44%
Cannock North	217	2	0	0%	101	34	1	3%
Cannock South	256	76	25	33%	100	85	35	41%
Cannock West	135	18	6	33%	71	66	16	24%
Etching Hill and The Heath	154	16	5	31%	66	36	11	31%
Hagley	117	2	0	0%	57	21	5	24%
Hawks Green	203	24	5	21%	119	25	2	8%
Heath Hayes East and Wimblebury	116	12	8	67%	71	33	7	21%
Hednesford Green Heath	88	18	11	61%	50	27	10	37%
Hednesford North	182	15	4	27%	70	57	11	19%
Hednesford South	96	0	0	-	43	10	2	20%
Norton Canes	140	18	4	22%	72	27	4	15%
Rawsley	102	13	3	23%	58	22	1	5%
Western Springs	158	42	19	45%	77	116	25	22%
<b>Cannock Chase</b>	<b>2,305</b>	<b>271</b>	<b>92</b>	<b>34%</b>	<b>1,104</b>	<b>609</b>	<b>150</b>	<b>25%</b>

\*The data provided is a snapshot of occupancy and vacancy data taken in summer term 2016 and may have changed by the time of this publication.

### SUFFICIENCY

#### Childcare Sufficiency 2-4 years in PVI sector, Summer 2016

Ward	Think2				3-4 years			
	Number of children in district	Places	Vacancies	Vacancies %	Number of children in district	Places	Vacancies	Vacancies %
Brereton and Ravenhill	30	34	18	53%	191	74	23	31%
Cannock East	46	16	6	38%	160	58	23	40%
Cannock North	65	42	2	5%	222	68	6	9%
Cannock South	63	83	26	31%	223	133	36	27%
Cannock West	16	70	21	30%	118	130	22	17%
Etching Hill and The Heath	33	15	5	33%	129	55	10	18%
Hagley	25	13	1	8%	134	44	11	25%
Hawks Green	22	10	2	20%	215	35	3	9%
Heath Hayes East and Wimblebury	26	32	11	34%	134	112	33	29%
Hednesford Green Heath	11	29	8	28%	89	39	10	26%
Hednesford North	50	48	14	29%	168	96	9	9%
Hednesford South	11	6	4	67%	101	20	6	30%
Norton Canes	25	20	9	45%	146	65	16	25%
Rawnsley	25	7	0	0%	115	51	12	24%
Western Springs	25	40	14	35%	157	90	4	4%
<b>Cannock Chase</b>	<b>473</b>	<b>465</b>	<b>141</b>	<b>30%</b>	<b>2,302</b>	<b>1,070</b>	<b>224</b>	<b>21%</b>

\*The data provided is a snapshot of occupancy and vacancy data taken in summer term 2016 and may have changed by the time of this publication.

### CHILDHOOD OBESITY

#### Excess Weight, Children aged 4 - 5 2010 - 2015

Ward	2010 - 2013	2013 - 2015	Statistical Difference to England
Brereton and Ravenhill	30.5%	27.1%	Similar
Cannock East	29.8%	25.5%	Similar
Cannock North	31.0%	28.7%	Higher
Cannock South	27.0%	31.8%	Higher
Cannock West	25.1%	24.1%	Similar
Etching Hill and The Heath	25.9%	28.7%	Higher
Hagley	30.2%	28.6%	Higher
Hawks Green	23.7%	25.8%	Similar
Heath Hayes East and Wimblebury	21.8%	24.3%	Similar
Hednesford Green Heath	26.1%	22.8%	Similar
Hednesford North	25.6%	26.6%	Similar
Hednesford South	23.3%	26.5%	Similar
Norton Canes	29.2%	27.2%	Similar
Rawnsley	29.2%	23.9%	Similar
Western Springs	25.8%	26.0%	Similar
<b>Cannock Chase</b>	<b>26.8%</b>	<b>26.8%</b>	<b>Higher</b>
<b>Staffordshire</b>	<b>23.4%</b>	<b>23.6%</b>	<b>Higher</b>
<b>England</b>	<b>22.5%</b>	<b>22.2%</b>	



### CHILDHOOD OBESITY

#### Obesity, Children aged 4 - 5 2010/11 - 2012/13

Ward	2010 - 2013	2012 - 2015	Statistical Difference to England
Brereton and Ravenhill	13.1%	9.2%	Similar
Cannock East	12.9%	9.8%	Similar
Cannock North	15.7%	15.1%	Higher
Cannock South	9.3%	9.5%	Similar
Cannock West	12.0%	12.4%	Similar
Etching Hill and The Heath	12.2%	10.7%	Similar
Hagley	9.5%	10.2%	Similar
Hawks Green	8.3%	9.9%	Similar
Heath Hayes East and Wimblebury	10.7%	8.4%	Similar
Hednesford Green Heath	11.6%	11.4%	Higher
Hednesford North	9.6%	10.9%	Similar
Hednesford South	8.5%	13.0%	Similar
Norton Canes	16.2%	9.2%	Similar
Rawsley	9.5%	11.3%	Similar
Western Springs	12.9%	12.5%	Similar
<b>Cannock Chase</b>	<b>11.5%</b>	<b>10.9%</b>	<b>Higher</b>
<b>Staffordshire</b>	<b>9.5%</b>	<b>9.5%</b>	<b>Similar</b>
<b>England</b>	<b>9.4%</b>	<b>9.3%</b>	

### EARLY YEARS FOUNDATION STAGE PROFILE

#### Pupils achieving Good Level of Development, 2016

Ward	GLD	Gender		Free School Meals		SEN		
		Male	Female	FSM	Non-FSM	No SEN (N)	Education Health Care Plan or Statement (E) or (S)	SEN Support (K)
Brereton and Ravenhill	71.4%	62.0%	85.3%	53.3%	76.5%	76.0%		37.5%
Cannock East	71.1%	58.3%	85.7%	58.8%	74.0%	81.9%	0.0%	29.4%
Cannock North	70.0%	65.5%	75.0%	66.7%	70.5%	73.0%		44.4%
Cannock South	73.8%	55.3%	89.3%	75.0%	73.6%	76.6%		44.4%
Cannock West	70.5%	55.6%	82.4%	100.0%	69.5%	79.6%	0.0%	0.0%
Etching Hill and The Heath	74.6%	63.9%	85.7%	100.0%	71.9%	79.7%	0.0%	33.3%
Hagley	62.7%	42.3%	78.8%	25.0%	64.8%	66.7%		28.6%
Hawks Green	78.6%	75.0%	83.0%	66.7%	79.4%	81.0%		0.0%
Heath Hayes East and Wimblebury	78.9%	71.4%	86.1%	100.0%	78.3%	80.6%		33.3%
Hednesford Green Heath	79.5%	64.7%	90.9%	100.0%	78.4%	79.4%		80.0%
Hednesford North	72.0%	70.5%	74.2%	50.0%	73.9%	76.5%		33.3%
Hednesford South	72.7%	56.0%	86.7%	100.0%	72.2%	74.0%		60.0%
Norton Canes	63.9%	64.0%	63.8%	0.0%	64.8%	70.8%	0.0%	0.0%
Rawnsley	73.1%	57.7%	88.5%	50.0%	74.0%	73.1%		
Western Springs	76.3%	70.0%	83.3%	20.0%	80.3%	80.6%		0.0%
<b>Cannock Chase</b>	<b>72.6%</b>							
<b>Staffordshire</b>	<b>73.8%</b>	<b>66.9%</b>	<b>80.9%</b>	<b>58.4%</b>	<b>75.3%</b>	<b>77.6%</b>	<b>2.0%</b>	<b>28.0%</b>
<b>England</b>	<b>69.0%</b>							