

Early Years Performance

District Profile Overview

CANNOCK CHASE DISTRICT OVERVIEW

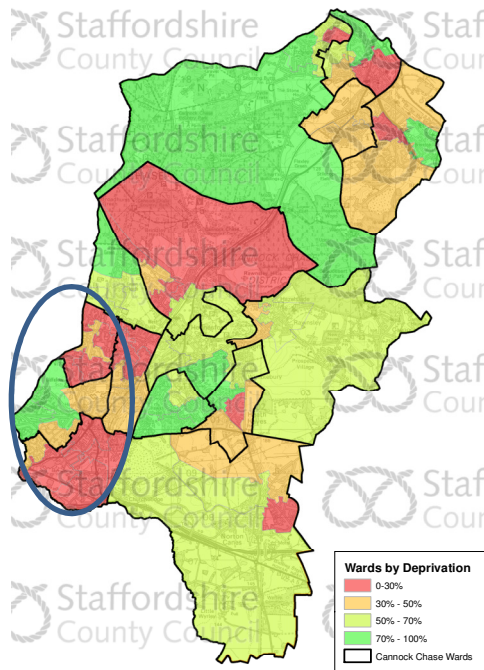
Target Groups: BRFC & LST Children aged 0-4, Children with additional needs, wards with lowest GLD

LAAC Grading:

Access – Good

Quality – Requires Improvement

Leadership – Good



Highest number of out of work benefit claimant households

16% of all Staffordshire households

Highest number of children under 5 in out of work benefit claimant households

17% of all Staffordshire children aged 0-4

One of the highest proportion of households with no working parent

Third highest district for proportion and highest district for number of households

Lowest number of households where all parents work

42% of households compared to 54% for Staffordshire

Increase in Early Years Reach from 2014/15 by 15.2 pp

Highest increases seen in Cannock South (26.8pp), Cannock East (23.4pp) and Hednesford North (21.7 pp)

Increase in the 0-30% Early Years Reach by 26.6 pp

Highest increases seen in Cannock South (34.4pp) and Hednesford North (27.6pp)

Statistically lower general fertility rate

57.6 per 1000 compared to 62.5 nationally

One of the lowest breastfeeding prevalence rates

26.1% compared to 32.8% across Staffordshire with Cannock West the lowest ward at 17%

Highest reduction in under 18 conceptions

Reduction of 48 conceptions between 2011 and 2014

Lowest rate of 5 year olds with tooth decay

9.8% compared to 17.8% across Staffordshire

Highest excess weight in Reception aged children and increasing from 2013/14

Cannock South with highest rate at 31.8% and Cannock North and Etching Hill & the Green at 28.7%

Highest rate of obesity and increasing

11.3% of Reception aged children are obese with the highest proportion in Cannock North at 15.1%

Greatest increase in achievement of a Good Level of Development

72.6% overall in Cannock yet Brereton & Ravenhill showed a decrease of 14.6 pp

Total Population	98,500
Under 5 Population	5,600 (5.7%)
Wards	15
LSOA's	19

96% of residents are White British with 4% of residents from BME groups; lower than the County average of 8.3%

4.6% increase in the population over the last 10 years, with a predicted increase of 3.4% between now and 2024

Average household income is lower at £35,000 compared to £39,000 for Staffordshire

19% of children live in low income families

19 children with Special Educational Needs (2015)

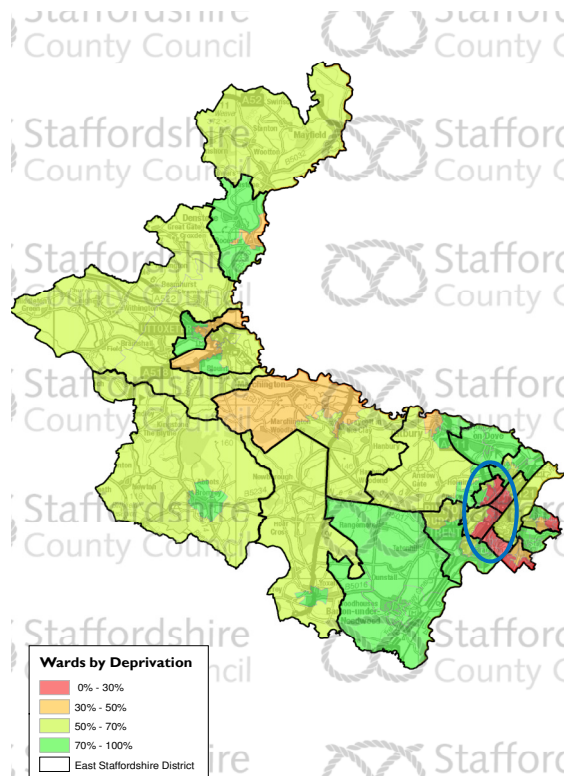
EAST STAFFORDSHIRE DISTRICT OVERVIEW

Target Groups: Children in Need, BRFC Families and 0-30% LSOAs

LAAC Grading: Access – Requires Improvement

Quality – Requires Improvement

Leadership – Requires Improvement



Highest under 5 population
6.3% of East Staffordshire population are aged under 5 compared to 5.3% across Staffordshire with Eton Park having the highest proportion at 10.4%

Highest number of children with Asian ethnicity

21% of children are of ethnicity other than white, 15% of which are of Asian ethnicity, accounting for 56% of the Asian population across Staffordshire

Highest general fertility rate

A rate of 70.8 per 1000, nearly 14 points above the Staffordshire rate, and statistically higher than England. Anglesey, Shobnall and Eton Park have rates over 90 per 1000.

Highest proportion of babies with low birthweight

8.4% of babies born with Low Birth Weight, statistically similar to England but 1.3pp above Staffordshire. Abbey has the highest rate at 15.4%

One of the highest reductions in breastfeeding prevalence by 41.3pp

Reduction of 41pp between initiation and prevalence, with rates ranging from 63.6% in Yoxall to 22% in Heath

Highest rate of tooth decay in children aged three years old

11.4% in East Staffs compared to 4.0% across Staffordshire

Increase in Reach by 13pp from 2014/2015

At ward level increases of 21pp between 2014/15 and 2015/16 seen in Shobnall and Horninglow

Increase of 25.6pp in 0-30% Reach

Biggest increases seen in Horninglow (23.3pp) and Shobnall (18.3pp)

Lowest achievement of Good Level of Development

70.4% achieving GLD compared to 73.8% across Staffordshire

Increase in achievement of GLD

A rise of 4pp from 66.1% the lowest achieving district in 2015 to 70.4% in 2016 above National

Total Population	116,000
Under 5 Population	7,300 (6.3%)
Wards	21
LSOA's	20

86.2% of residents are White British, the lowest proportion across the County

14% of residents are from BME groups, the highest in the County

8.3% increase in the population over the last 10 years, with a further 13.5% increase predicted between now and 2037

15% of children live in low income families

The average household income is £38,000 compared to £39,000 for Staffordshire

17 children with Special Educational Needs (2015)

LICHFIELD DISTRICT OVERVIEW

Target Groups: Families from 0-30% LSOAs, Children under 5 supported by BRFC, Children in Need under the age of 5

LAAC Grading: Access – Requires Improvement

Quality – Requires Improvement

Leadership – Good



One of the highest proportion of households where all parents work

69% of households with all parents working, second to Staffordshire Moorlands (73%) and above Staffordshire average of 54%

Lowest proportion of households with no working parent

Only 3% of households in Lichfield with no working parent against Staffordshire average of 14%

Statistically high number of households with children under 5, claiming benefits

Chadsmead has the highest number of out of work benefit claimant households (130) with 100 children aged under 5

Higher than England rate of A & E attendances by children under five

569 attendances per 1000 at A&E, second highest rate to Tamworth with 812 per 1000

Statistically higher than national excess weight in children aged four

An increasing rate of Reception aged children who are overweight and obese with the highest rates seen in Chasetown (33.6%) and Boney Hay & Central (32.6%)

Highest rate of breastfeeding initiation

Breastfeeding initiation rate of 76.9% compared to 67.2% across Staffordshire

Statistically lower than England levels of breastfeeding

5 wards significantly lower than the England average including Fazeley at 13.5%

Increase in Early Years Reach of 14.2pp

Increases of 29.2pp in Armitage with Handsacre and 28.2pp in Bournevale. Reach ranges from 28.4% in Little Aston to 74.0% in Longdon

Highest increase in 0-30% Reach

An overall increase of 36.5pp between 2014/15 to 2015/16 with increases of 6.8pp in Chadsmead and 5.8pp in Curborough

Smallest increase in the result for Good Level of Development

An increase of less than 1pp between 2015 and 2016 with a range of achievement from 35.7% in Longdon to 93.8% in Colton & Mavesyn Ridware

Total Population	102,700
Under 5 Population	5,200 (5.1%)
Wards	26
LSOA's	5

95% of residents are White British, with 5% of residents from BME groups

7.7% increase in the population over the last 10 years, with a further 10.2% increase predicted between now and 2037

12% of children living in low income families.

Average household income is £46,000 compared to £39,000 for Staffordshire

15 children with Special Educational Needs (2015)

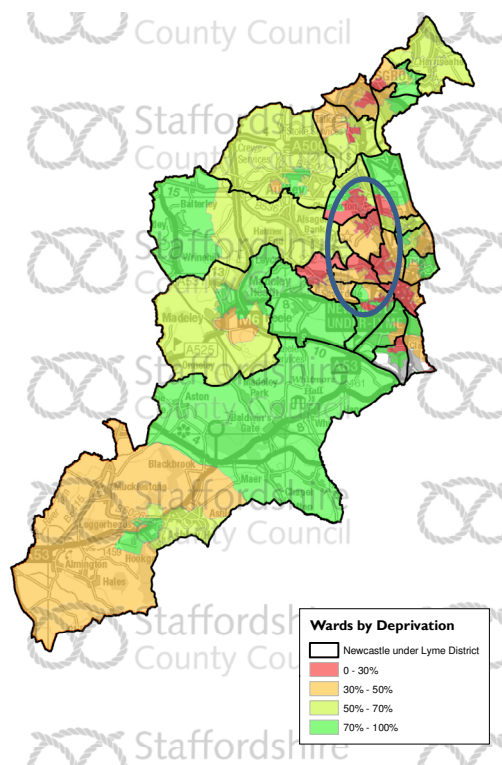
NEWCASTLE-UNDER-LYME DISTRICT OVERVIEW

Target Groups: BRFC Children, Children in families with Domestic Violence and Children in Need, wards of Knutton & Silverdale and Holditch

LAAC Grading: Access – Good

Quality – Requires Improvement

Leadership – Good:



Highest Early Years Reach

69% of children 0-4 reached in Newcastle with the ward of Clayton having a reach of 87.5% and Cross Heath a reach of 86.5%

Lowest rate of obesity in children aged 4 – 5

District rate of 7.4% in 2014/15 was the lowest compared to average of 9.0% across Staffordshire. The lowest ward rate was seen in Westlands with 4.7% and Butt Lane with 5.1%

Increasing rate of under 18 conceptions

The rate has increased since 2011 to 67 in 2014 despite an overall decline in Staffordshire

Highest proportion of children aged five with tooth decay

25.5% of five years olds with tooth decay, a similar rate to England but above the Staffordshire average of 17.8%

Lowest General Fertility Rate

The lowest general fertility rate of 52.2 per 1000, with Knutton & Silverdale having a statistically higher rate than England

Lowest rate of hospital admissions caused by unintentional and deliberate injuries for children under 5

A rate of 99 per 1000 compared to 175 per 1000 for Staffordshire

Lowest Breastfeeding Initiation Rate

A rate of 56.3%, statistically lower than England and the Staffordshire average of 67.2%

Total Population	127,000
Under 5 Population	6,500 (5%)
Wards	24
LSOA's	17

86.2% of residents are White British, with 7% of residents from BME groups

2% increase in the population over the last 10 years, with a further 4.7% increase predicted between now and 2037

16% of children live in low income families

Average household income is £35,000 compared to £39,000 for Staffordshire

16 children with Special Educational Needs (2015)

Highest number of Children in Need

14.9% (224) of children aged 0-4 classed as a Child in need as at March 2016, with 11% residing in Chesterton and 10% residing in Thistleberry

Smallest reduction in Breastfeeding Prevalence by 16.6pp

A reduction of 16.6pp in breastfeeding rates to a rate of 39.7% beyond 6 weeks. The lowest rate of breastfeeding is seen in Kidsgrove at 18.2%

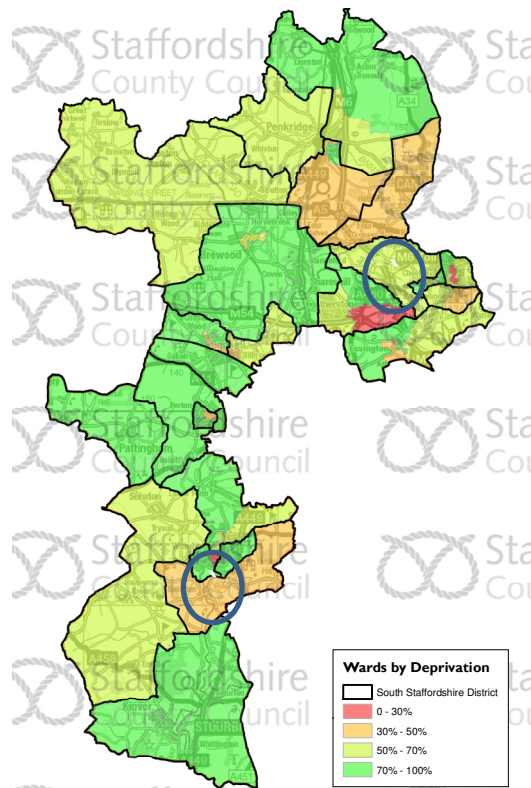
SOUTH STAFFORDSHIRE DISTRICT OVERVIEW

Target Groups: 0-30% LSOAs, BRFC Families and families eligible for who do not take up their entitlement.

LAAC Grading: Access – Requires Improvement

Quality – Requires Improvement

Leadership – Requires Improvement



Lowest number of families eligible for BRFC

72 families eligible for Phase 2 Year 2 with one of the lowest number of children aged 0-4

Take up of Think2

The lowest take up of Think2 places (Summer 2016) 67% compared to average across Staffordshire of 80%

Lowest Early Years Reach

An Early Years Reach of 46.5%, over 5pp lower than the next best district. Himley & Swindon has the lowest reach with 24.2% and Cheslyn Hay North & Saredon with the highest at 70.5%

Increase in Reach from 2014/15

An increase of 7.7pp overall masking variation in changes across wards, specifically increases in Cheslyn Hay North & Saredon of 23.3pp and 21.5pp in Great Wyrley Town

One of the lowest under 18 conception rates

A figure of 31 conceptions in 2014, albeit a decrease from previous years in line with Staffordshire

Lowest proportion of babies born with a low birthweight

5.5% of babies were born with Low Birth Weight in 2014, statistically lower than England and below the Staffordshire average of 7.1%. All wards similar to England except Wombourne North & Lower Penn with a rate statistically lower than England

Lowest rate of A & E attendances by children under five years old

A rate of 303 attendances per 1000, statistically lower than England and well below the Staffordshire average of 451 per 1000

Static level of reception children who are overweight or obese

No change in the rate of children who are overweight or obese at 24.4%, statistically higher than England and the third highest district performance for 2014/15

Highest result for GLD

Attainment of 77.3% in 2016 an increase of 6.4pp from 2015, with the best performing ward being Perton East at 95.0%

Highest result for GLD in 0-30% LSOAs

72.9% of children living in the 0-30% LSOAs achieving a GLD, only 4.4pp below the district average

Total Population	110,700
Under 5 Population	5,000 (6.3%)
Wards	25
LSOA's	3

86.2% of residents are White British with 5% of residents from BME groups

3.8% increase in the population over the last 10 years, with a further 3% increase predicted between now and 2037

12% of children live in low income families

Average household income is £43,000 compared to £39,000 for Staffordshire

16 children with Special Educational Needs (2015)

STAFFORD DISTRICT OVERVIEW

Target Groups: Highfields and Western Downs, BRFC and Children in Need

LAAC Grading: Access – Requires Improvement

Quality – Requires Improvement

Leadership – Requires Improvement



Highest number of households with one working parent and non working parent

52% of households have one working parent, 20pp above the Staffordshire average of 32%

High number of households with children under five claiming benefits

The number of households is statistically high, with the highest proportion of households being in Highfields (200 households and 130 under 5's)

Statistically high proportion of lone parent households

5.4% of all households are lone parents with high proportions in Highfields & Western Downs (11.1%) and Penkside (10.5%)

Increase in EY Reach from 2014/15

Increase of 15.8pp from 2014/15 to 55.2% with the highest increases in Common (45.1pp to 83.9%) and Littleworth (37.6pp to 78.9%)

Increase in EY Reach in 0-30% LSOAs

Increase of 24.0pp from 2014/15 to 73.5% with the highest increases in Littleworth (19.2pp) and Common (18.0pp)

Low rate of breastfeeding prevalence

4 wards have rates statistically lower than England with one ward, Milford having a statistically higher rate than England at 78%

Highest rate of hospital admissions caused by unintentional and deliberate injuries

A rate of 266 admissions per 10,000 children aged under 5, over 91 higher than the Staffordshire rate

Lowest proportion of reception aged children who have excess weight and obesity

19.8% of reception aged children who are overweight or obese, over 3pp below the Staffordshire average

One of the highest tooth decay rates in three year olds

Second highest rate (9%) of tooth decay among 3 year olds in Staffordshire

One of the highest tooth decay rates in five year olds

Second highest rate (22.2%) of tooth decay among 5 year olds in Staffordshire, although statistically similar to England

Highest attainment of GLD

75.8% of pupils achieved a GLD in 2016, albeit one of the districts least improved from 2015. The highest attainment seen in Milford (89.3%) and the lowest in Highfields & Western Downs (59.3%)

Total Population	132,500
Under 5 Population	6,600 (5.0%)
Wards	23
LSOA's	9

90% of residents are White British

11% of children live in low income families

8% of adults are claiming key benefit, including job seekers allowance or disability benefits

Average household income is £42,000 compared to £39,000 for Staffordshire

16 children with Special Educational Needs (2015)

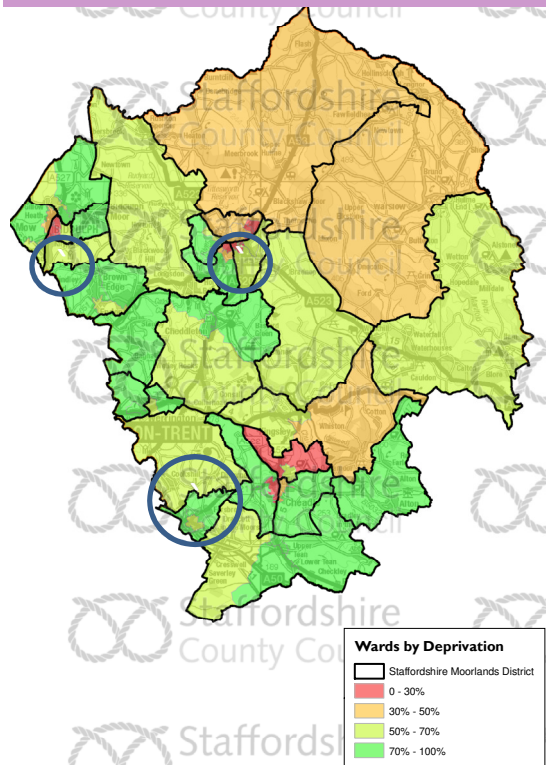
STAFFORDSHIRE MOORLANDS DISTRICT OVERVIEW

Target Groups: Families from 0-30% LSOAs, specifically Leek North, Biddulph East & Cheadle, BRFC Families and Children in Need

LAAC Grading: Access – Requires Improvement

Quality – Requires Improvement

Leadership – Good



Statistically high proportion of lone parents households

Biddulph East has the highest proportion of lone parent households at 11.3%, over double the district average

Highest proportion of households where all parents work

73% of Staffs Moorlands households have all parents working, nearly 20pp above the Staffordshire average of 54%

Statistically low number of households with children under five who claim benefits

The lowest number of households with children under 5 claiming out of work benefits at 935. The largest number of claimant households are in Biddulph East (180 households) and Leek North (145 households)

Lowest number of under 18 conceptions

The lowest number of conceptions at a district level with 25 in 2014 and decreasing

Highest breastfeeding prevalence rates

Rate of 40.3% in breastfeeding prevalence, over 7pp above the Staffordshire average. The highest rates can be seen in Biddulph South, Horton and Ipstones all with 66.7% whereas Leek North has a rate of 27.5%

Statistically high excess weight in children under 5

District with the second highest rate of reception aged children who are overweight or obese (24.8%), with high rates seen in Biddulph South and Caverswall, both at 40.0%

Statistically high rate of obesity

A rate statistically similar to England across the district with Caverswall statistically higher at 20.0%, well above the district average of 9.6%

Increase in Early Years Reach since 2014/15

An increase of nearly 10pp since last year with the highest increases in Cheadle North East (23.5pp) and Leek North (20.3pp)

Lowest Early Years Reach in 0-30% LSOAs

59.9% of children living in the 0-30% areas of deprivation were reached in 2015/16, over 10pp below the Staffordshire average

Statistically high proportion of children in need

Statistically high proportions of children in need reside in Biddulph East (21%) and Leek North (16%)

Total Population	97,900
Under 5 Population	4,500 (5%)
Wards	27
LSOA's	9

97.5% of residents are White British, with 3% of residents from BME groups

2.5% increase in the population over the last 10 years, with a further 2.7% increase predicted between now and 2037

11% of children live in low income families

Average household income is £36,000 compared to £39,000 for Staffordshire

13 children with Special Educational Needs (2015)

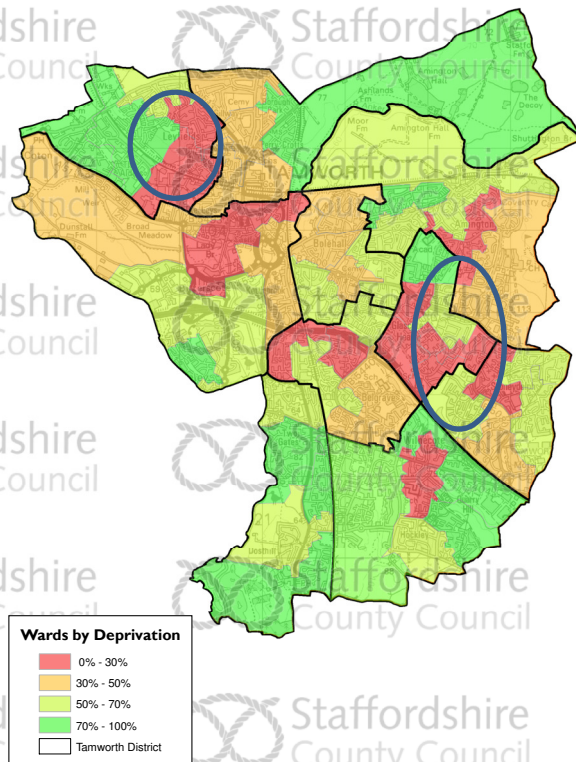
TAMWORTH DISTRICT OVERVIEW

Target Groups: Think2 take up , BRFC families and teenage parents

LAAC Grading: Access – Good

Quality – Requires Improvement

Leadership – Requires Improvement



Highest proportion of households with no working parent

25% of Tamworth households have no parent working, this is on a par with Newcastle but over 10pp above the Staffordshire average

Second highest increase in Reach

Second highest increase in reach of 21.5pp between 2014/15 and 2015/16, with highest increases in Mercian (40.3pp to 89.6%)

One of the highest proportion of under 18 conceptions

A figure of 60 conceptions in 2014 and a relatively static rate over the previous four years

Second highest rate of babies born with a low birthweight

A statistically similar rate to England but 1pp above the Staffordshire average with Mercian having the highest rate at 13.2%

Lowest proportion of breastfeeding prevalence

The lowest level for breastfeeding prevalence at 19.8%, 13pp below the Staffordshire average with the lowest levels in Stonydelph at 11.9%

Highest rate of A & E attendances by children under 5

A rate of 812 attendances per 1000 children aged under 5, over 350 attendances higher than Staffordshire and statistically higher than England

No children aged three with tooth decay

No children aged 3 identified with tooth decay compared to 14.1% of 5 years olds

One of the lowest NEF take up in school nurseries

A take up of 11% in school nurseries in Tamworth compared to 73% in the PVI sector

Smallest gender gap in Good Level of Development

A gap of 8pp between boys and girls in Tamworth compared to a gender gap of 14pp across Staffordshire

Total Population	77,100
Under 5 Population	4,700 (6.1%)
Wards	10
LSOA's	12

95% of residents are White British with 4% of residents from BME groups

18% of children live in low income families

Average household income is £35,000 compared to £39,000 for Staffordshire

19 children with Special Educational Needs (2015)

Highest proportion of lone parent households

8% of Tamworth households are lone parents, above the Staffordshire average of 5.9%, with Glascote and Stonydelph having high proportions at 11.3% and 10.5% respectively