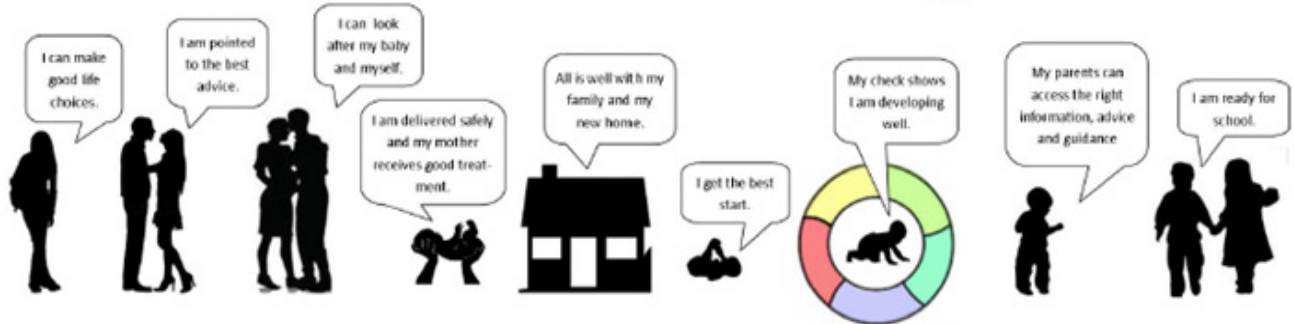


# LICHFIELD DISTRICT PROFILE

TEENAGER    CONCEPTION    PREGNANCY    BIRTH    HOME    0-6 WEEKS    1 YEAR    2 YEARS    TODDLER (3-4 YEARS)    FIRST DAY OF SCHOOL

★ PHSE   ★ CONTRACEPTIVE ADVICE   ★ HEALTH PREGNANCY CHECK   ★ 14 DAY NEW BIRTH VISIT   ★ 6 WEEK CHECK   ★ IMMUNISATION   ★ 12 MONTH AGES & STAGES QUESTIONNAIRE / THINK 2   ★ NURSERY EDUCATION FUND (3-4 ENTITLEMENT)   ★ EYFS KS1



DECEMBER 2016

## CONTENTS PAGE

<b>Introduction</b> .....	<b>3</b>
<b>Summary</b> .....	<b>4</b>
<b>Population</b>	
Ward Boundaries .....	6
Under 5 Population.....	7
Household Composition .....	8
Worklessness.....	9
Children’s Social Care Groups.....	10
Building Resilient Families and Communities (BRFC) .....	11
Early Years Reach.....	13
Children Centre Attendance Map.....	15
<b>Conception</b>	
Under 18 Conception (District map).....	17
<b>Birth</b>	
General Fertility Rates .....	18
Low Birthweight .....	19
<b>0-6 Weeks</b>	
Breastfeeding Prevalence.....	20
<b>1 Year and 2 Year</b>	
Think2 .....	21
Sufficiency.....	22
<b>Toddler</b>	
Sufficiency.....	23
<b>First Day at School</b>	
Childhood Obesity.....	24
Early Years Foundation Stage Profile .....	26

## Contact for Further Information

Report compiled by Operational Intelligence & Performance Team  
 Claire Makinson - Performance Manager, 01785 277067  
 Farhana Patel - Performance Officer, 01785 277798

## INTRODUCTION

The purpose of the Early Years District Profile is to bring together a wide range of indicators for each district. It provides the commissioners with a robust evidence base across a range of health and wellbeing issues to help identify priority areas to target and place services in appropriate areas.

The report pulls together information from various sources to present a picture of the health and wellbeing of children aged 0-4, following through the Best Start Pathway.

The data is presented and displayed at Ward Level with comparisons made with Staffordshire and England. Information used in the report is the latest available at the time of writing.

Health and social needs are complex and it is unlikely that there will be a single factor which is responsible for the particular situation in each local area. Therefore, it is important that no single item of information is treated in isolation. Instead the various pieces of data and evidence should be used together to give a better picture of the needs of children and young people in the local community.

We aim to produce this annually with the next one being due November 2016 to support the Districts with their Local Authority annual conversations.

## SUMMARY

Lichfield district has seen a change of ward boundaries in the last year, reducing from 26 wards to 22 wards, with 5 Lower Super Output Areas of 0-30% deprivation across the 5 wards, where previously they were across only 3 wards. The population of children aged 0-4 has stayed at similar levels between 2013 and 2015 at 5.1% with a marginal decrease in the number of children from 5,240 to 5,201 between 2013 and 2015; Boney Hay & Central has seen the greatest change with a 1.7 percentage point decrease.

For families with dependents, married couples are the largest group in the district accounting for 14.9% of households; the proportion of households that are lone parents varies across the wards from 2.3% in Little Aston to 11.7% in Chadsmead giving an average of 4.3% of all households that are lone parents with children under the age of 5 in Lichfield.

The numbers of children living in out of work benefit claimant households has seen a decrease in 2015; compared to 2013 Lichfield has seen a marginal decrease of 2.9%. 11 of the 26 wards showed an increase with Chadsmead having the greatest increase with 95 more children living in out of work benefit claimant households in 2015 compared to 2012.

The largest proportion of Children in Need are in Chadsmead and Curborough wards; Chadsmead also has the largest proportion of children who are subject of a Child Protection Plan with 8 of the 30 children across the district. There are 19 children across the wards in Lichfield who are Looked After, the largest number being in Armitage with Handsacre, but due to the low numbers the data for the remainder has been suppressed.

The Early Years Reach across Lichfield has show an improvement of 14.2 percentage points between 2014/15 and 2015/16 equating to an additional 741 children aged 0-4. All wards have shown an improvement in the Reach, most noticeably in Armitage & Handsacre, Whittington and Bourne Vale with increases of 29.1, 28.4 and 28.2 percentage points respectively. Following ward boundary changes, Boney Hay and Summerfield both now have areas of 0-30% deprivation but the existing 3 wards with 0-30% deprivation have seen an improvement in the Reach, with Chadsmead showing the largest improvement of 6.8 percentage points, followed by Curborough with a 5.8 percentage point increase; this gives Lichfield a 0-30% Reach figure of 89.9%, a 36.5 percentage point increase from 2014/15.

Attendance at Children Centre activities in Lichfield shows the majority of attendees are from the local areas surrounding the centre and community venues. Attendees are also seen to be travelling from the neighbouring districts of Cannock and East Staffordshire. There have also been some families travelling from outside of Staffordshire.

## SUMMARY CONT'D

The general fertility rates across the whole of Lichfield are statistically lower than England at 57.0 per 1,000 women aged 15-44 compared to 63.2 per 1,000 for England and 57.8 per 1,000 for Staffordshire. The rates vary across the district with the highest general fertility rate in Armitage with Handsacre with 66.6 per 1,000 and the lowest in Shenstone with 42.1 per 1,000.

Of the babies born in Lichfield, 7.8% are born with a low birthweight, which is statistically similar to both the Staffordshire and England average of 7.2% and 7.3% respectively. Lichfield has seen a slight decrease in the proportion of low birth weight babies of 0.4 percentage points from 2011/2013. In 2012-2014 the proportion of babies who were born with a low birthweight ranges from 4.3% in Curborough to 17.5% in Bourne Vale.

Data as at Summer 2016 shows the take up of Think2 childcare places is 74% in Lichfield. In terms of sufficiency for Think2 places, there is a vacancy rate of 39% which represents 130 vacancies; whereas the vacancy rate for all 2 year olds is 19%.

Staffordshire has a statistically higher rate than England of children who are in reception class with excess weight; whereas the rate for Lichfield is statistically similar to that of England with 23.5%. Boney Hay, Chadsmead, Chase Terrace and Chasetown have the highest rates across the district with Chase Terrace and Chadsmead seeing the largest increases from the previous period with rises of 10.4 and 9.0 percentage points respectively. At the opposite end of the scale, Boley Park, Bourne Vale and Hammerwich with Wall have the lowest rates for reception age children with excess weight. Children of the same age group who are classed as obese is again similar to England across the whole of Lichfield, and both have seen a 0.3 percentage point increase from the period of 2010-2013 to 2012-2015. Colton & The Ridwares stands out as the one ward with a statically higher rate than England at 19.6%.

The proportion of children in Lichfield with a Good Level of Development at the Early Years Foundation Stage is higher than the England average of 69% but slightly below the Staffordshire average of 73.8%. The Good Level of Development rate varies significantly across the wards from 35.7% in Longdon to 93.8% Colton and Mavesyn Ridware. Overall girls are performing better than boys with the exception of performance in 7 wards where boys achieved a better Good Level of Development result, most noticeably in All Saints where the gender gap was in favour of boys by 17.9 percentage points.

### WARD BOUNDARIES

#### Ward Boundaries

- 1 Alrewas and Fradley
- 2 Armitage with Handsacre
- 3 Boley Park
- 4 Boney Hay and Central
- 5 Bourne Vale
- 6 Chadsmead
- 7 Chase Terrace
- 8 Chasetown
- 9 Colton and The Ridwares
- 10 Curborough
- 11 Fazeley
- 12 Hammerwich will Wall
- 13 Highfield
- 14 Leomansley
- 15 Little Aston and Stonnall
- 16 Longdon
- 17 Mease Valley
- 18 St John's
- 19 Shenstone
- 20 Stowe
- 21 Summerfield
- 22 Whittington



This product contains mapping data licensed from Ordnance Survey with the permission of the Controller of Her Majesty's Stationary Office©

Crown Copyright and/or database right 2015. All rights reserved.  
Licence Number 1 000 19422

### UNDER 5 POPULATION

#### Proportion of children aged 0-4 , 2013 - 2015

Ward	2013			2014			2015		
	Total Population	Total under 5	Percentage under 5	Total Population	Total under 5	Percentage under 5	Total Population	Total under 5	Percentage under 5
All Saints	3,469	153	4.4%	3,462	141	4.1%			
Alrewas and Fradley	6,077	353	5.8%	6,042	335	5.5%	6,063	325	5.4%
Armitage with Handsacre	5,727	325	5.7%	5,926	361	6.1%	7,432	441	5.9%
Boley Park	4,880	233	4.8%	4,914	235	4.8%	4,386	215	4.9%
Boney Hay and Central	3,134	199	6.3%	3,124	199	6.4%	6,463	297	4.6%
Bourne Vale	2,387	83	3.5%	2,351	78	3.3%	3,025	108	3.6%
Burntwood Central	3,016	97	3.2%	3,033	97	3.2%			
Chadsmead	3,851	297	7.7%	3,850	292	7.6%	4,752	333	7.0%
Chase Terrace	5,146	262	5.1%	5,128	257	5.0%	4,742	224	4.7%
Chasetown	3,844	201	5.2%	3,884	214	5.5%	3,862	215	5.6%
Colton and The Ridwares	1,823	70	3.8%	1,830	74	4.0%	2,155	82	3.8%
Curborough	5,002	265	5.3%	4,998	242	4.8%	4,459	218	4.9%
Fazeley	4,863	285	5.9%	4,896	291	5.9%	4,593	260	5.7%
Hammerwich with Wall	3,403	146	4.3%	3,397	138	4.1%	4,252	165	3.9%
Highfield	3,970	179	4.5%	3,931	169	4.3%	4,578	171	3.7%
King's Bromley	1,756	62	3.5%	1,772	67	3.8%			
Leomansley	7,301	432	5.9%	7,356	428	5.8%	7,049	412	5.8%
Little Aston & Stonnall	2,830	99	3.5%	2,921	102	3.5%	4,859	212	4.4%
Longdon	1,827	59	3.2%	1,815	50	2.8%	2,012	57	2.8%
Mease Valley	3,658	170	4.6%	3,589	140	3.9%	1,957	66	3.4%
St John's	6,589	399	6.1%	6,650	426	6.4%	6,121	395	6.5%
Shenstone	3,310	119	3.6%	3,351	123	3.7%	2,184	94	4.3%
Stonnall	1,526	71	4.7%	1,481	71	4.8%			
Stowe	5,098	226	4.4%	5,097	225	4.4%	6,249	274	4.4%
Summerfield and All Saints	3,853	302	7.8%	3,818	284	7.4%	6,270	402	6.4%
Whittington and Streethay	3,428	153	4.5%	3,477	169	4.9%	5,243	235	4.5%
<b>Lichfield</b>	<b>101,768</b>	<b>5,240</b>	<b>5.1%</b>	<b>102,093</b>	<b>5,208</b>	<b>5.1%</b>	<b>102,706</b>	<b>5,201</b>	<b>5.1%</b>
<b>Staffordshire</b>	<b>857,007</b>	<b>46,099</b>	<b>5.4%</b>	<b>860,165</b>	<b>45,619</b>	<b>5.3%</b>	<b>862,562</b>	<b>45,344</b>	<b>5.3%</b>
<b>England</b>	<b>56,948,229</b>	<b>3,592,907</b>	<b>6.3%</b>	<b>54,316,618</b>	<b>3,430,957</b>	<b>6.3%</b>	<b>54,779,872</b>	<b>3,425,796</b>	<b>6.3%</b>

### HOUSEHOLD COMPOSITION

#### Household Composition - Families with Dependants, 2011

Ward	Number of all Households	Married Couple		Cohabiting Couple		Lone Parent		Same-Sex Civil		Other Households	
		Number of families	% of all households	Number of families	% of all households	Number of families	% of all households	Number of families	% of all households	Number of families	% of all households
All Saints	1,449	226	15.6%	71	4.9%	43	3.0%	0	0.0%	20	1.4%
Alrewas and Fradley	2,332	552	23.7%	107	4.6%	106	4.5%	0	0.0%	48	2.1%
Armitage with Handsacre	2,185	356	16.3%	112	5.1%	116	5.3%	0	0.0%	58	2.7%
Boley Park	2,091	340	16.3%	52	2.5%	74	3.5%	0	0.0%	24	1.1%
Boney Hay	1,319	170	12.9%	63	4.8%	74	5.6%	0	0.0%	27	2.0%
Bourne Vale	695	122	17.6%	25	3.6%	33	4.7%	0	0.0%	18	2.6%
Burntwood Central	1,260	200	15.9%	56	4.4%	56	4.4%	0	0.0%	24	1.9%
Chadsmead	1,542	212	13.7%	101	6.5%	180	11.7%	0	0.0%	40	2.6%
Chase Terrace	2,127	389	18.3%	111	5.2%	107	5.0%	0	0.0%	42	2.0%
Chasetown	1,615	215	13.3%	98	6.1%	130	8.0%	2	0.1%	42	2.6%
Colton and Mavesyn Ridware	711	108	15.2%	28	3.9%	22	3.1%	0	0.0%	17	2.4%
Curborough	2,083	311	14.9%	95	4.6%	134	6.4%	0	0.0%	50	2.4%
Fazeley	1,992	288	14.5%	99	5.0%	123	6.2%	0	0.0%	53	2.7%
Hammerwich	1,406	212	15.1%	58	4.1%	35	2.5%	0	0.0%	21	1.5%
Highfield	1,555	350	22.5%	64	4.1%	47	3.0%	0	0.0%	30	1.9%
King's Bromley	668	120	18.0%	12	1.8%	16	2.4%	0	0.0%	16	2.4%
Leomansley	3,067	564	18.4%	118	3.8%	152	5.0%	0	0.0%	44	1.4%
Little Aston	1,104	214	19.4%	24	2.2%	25	2.3%	0	0.0%	33	3.0%
Longdon	775	121	15.6%	22	2.8%	13	1.7%	0	0.0%	15	1.9%
Mease and Tame	1,412	291	20.6%	47	3.3%	43	3.0%	0	0.0%	30	2.1%
Shenstone	1,317	244	18.5%	40	3.0%	46	3.5%	0	0.0%	22	1.7%
St John's	2,651	550	20.7%	118	4.5%	116	4.4%	0	0.0%	38	1.4%
Stonnall	625	112	17.9%	24	3.8%	31	5.0%	0	0.0%	9	1.4%
Stowe	2,326	275	11.8%	70	3.0%	109	4.7%	0	0.0%	33	1.4%
Summerfield	1,562	245	15.7%	130	8.3%	116	7.4%	0	0.0%	39	2.5%
Whittington	1,355	276	20.4%	52	3.8%	69	5.1%	0	0.0%	21	1.5%
<b>Lichfield</b>	<b>47,251</b>	<b>7,063</b>	<b>14.9%</b>	<b>1,797</b>	<b>3.8%</b>	<b>2,016</b>	<b>4.3%</b>	<b>2</b>	<b>0.0%</b>	<b>814</b>	<b>1.7%</b>
<b>Staffordshire</b>	<b>355,263</b>	<b>56,756</b>	<b>16.0%</b>	<b>16,242</b>	<b>4.6%</b>	<b>21,016</b>	<b>5.9%</b>	<b>30</b>	<b>0.01%</b>	<b>6,833</b>	<b>1.9%</b>
<b>England</b>	<b>22,063,368</b>	<b>3,373,005</b>	<b>15.3%</b>	<b>890,780</b>	<b>4.0%</b>	<b>1,573,255</b>	<b>7.1%</b>	<b>2,885</b>	<b>0.01%</b>	<b>584,016</b>	<b>2.6%</b>

Remainder of the population is made up of households with no children



### WORKLESSNESS

#### Under 5 population living in out-of-work benefit claimant households, 2012-2015

Ward	2012		2013		2014		2015	
	No. of Households	No. of children aged 0-4	No. of Households	No. of children aged 0-4	No. of Households	No. of children aged 0-4	No. of Households	No. of children aged 0-4
All Saints	80	50	30	15	20	5	20	15
Alrewas and Fradley	55	40	55	20	45	15	40	15
Armitage with Handsacre	40	25	105	55	90	55	65	35
Boley Park	90	70	30	25	20	15	30	25
Boney Hay	105	90	70	50	65	40	60	30
Bourne Vale	75	55	10	10	20	15	15	15
Burntwood Central	15	5	20	5	30	15	25	20
Chadsmead	20	5	150	120	140	115	130	100
Chase Terrace	110	65	45	30	50	25	40	20
Chasetown	30	15	100	60	85	45	85	45
Colton and Mavesyn Ridware	45	35	10	0	15	10	5	5
Curborough	50	25	100	70	90	65	90	65
Fazeley	50	35	95	60	95	70	90	60
Hammerwich	40	30	20	15	20	10	15	10
Highfield	25	10	25	15	20	10	20	10
King's Bromley	20	10	5	5	5	10	5	-
Leomansley	30	20	70	35	60	25	50	35
Little Aston	35	15	10	0	10	0	-	-
Longdon	15	5	5	5	5	5	5	5
Mease and Tame	40	25	30	15	25	10	20	5
Shenstone	15	10	40	25	40	30	35	25
St John's	25	10	30	10	30	10	25	10
Stonnall	15	10	15	10	10	10	10	10
Stowe	25	10	80	40	60	45	60	45
Summerfield	30	20	110	75	100	70	75	60
Whittington	10	0	10	5	15	0	10	5
<b>Lichfield</b>	<b>1,090</b>	<b>690</b>	<b>1,270</b>	<b>775</b>	<b>1,165</b>	<b>725</b>	<b>1,025</b>	<b>670</b>
<b>Staffordshire</b>	<b>14,790</b>	<b>9,235</b>	<b>12,875</b>	<b>8,050</b>	<b>11,720</b>	<b>7,500</b>	<b>10,735</b>	<b>6,605</b>
<b>England</b>	<b>1,340,420</b>	<b>839,965</b>	<b>1,268,335</b>	<b>805,100</b>	<b>1,161,325</b>	<b>735,420</b>	<b>1,066,540</b>	<b>669,360</b>

### CHILDREN'S SOCIAL CARE GROUPS

#### Children's Social Care Groups 2015/2016

Ward	Children aged 0-4			Percentage children aged 0-4		
	CIN	CP	LAC	CIN	CP	LAC
All Saints	7	s		6%	3%	
Alrewas and Fradley	6	s		5%	7%	
Armitage with Handsacre	5	s	4	4%	7%	21%
Boley Park	s			1%		
Boney Hay	s			2%		
Burntwood Central	s			2%		
Chadsmead	17	8	s	14%	27%	5%
Chase Terrace	8	3	s	6%	10%	11%
Chasetown	11	s	s	9%	3%	21%
Colton and Mavesyn Ridware			s	0%		11%
Curborough	13	s		10%	10%	
Fazeley	7	s	s	6%	7%	5%
Hammerwich	s		s	2%		5%
Highfield	8	s	s	6%	7%	5%
King's Bromley	s	s		2%	7%	
Leomansley	s	s	s	3%	3%	11%
Little Aston	s			1%		
Longdon	s	s		1%	3%	
St. John's	8			6%		
Stowe	9	s	s	7%	3%	5%
Summerfield	9	s		7%	3%	
<b>Lichfield</b>	<b>124</b>	<b>30</b>	<b>19</b>	<b>100%</b>	<b>100%</b>	<b>100%</b>

### BUILDING RESILIENT FAMILIES AND COMMUNITIES (BRFC)

#### Phase 2 Year 1 Eligible Families 2015/16

Ward	Eligible Families	Count of people	Eligible families with children aged 0-4	Count of Children aged 0-4	Percentage of families with children aged 0-4
All Saints	2	9	0	0	0.0%
Alrewas and Fradley	9	24	2	5	22.2%
Armitage with Handsacre	3	11	1	2	33.3%
Boley Park	4	14	1	2	25.0%
Boney Hay	6	15	1	1	16.7%
Bourne Vale	0	0	0	0	-
Burntwood Central	0	0	0	0	-
Chadsmead	15	52	4	5	26.7%
Chase Terrace	5	25	0	0	0.0%
Chasetown	12	45	4	5	33.3%
Colton and Mavesyn Ridware	0	0	0	0	-
Curborough	15	63	5	8	33.3%
Fazeley	8	33	3	4	37.5%
Hammerwich	1	2	0	0	0.0%
Highfield	5	17	1	1	20.0%
King's Bromley	0	0	0	0	-
Leomansley	10	35	3	3	30.0%
Little Aston	1	5	0	0	0.0%
Longdon	0	0	0	0	-
Mease and Tame	2	7	0	0	0.0%
Shenstone	6	14	0	0	0.0%
St John's	6	21	3	6	50.0%
Stonnall	0	0	0	0	-
Stowe	9	34	0	0	0.0%
Summerfield	15	48	7	8	46.7%
Whittington	1	4	0	0	0.0%
<b>Lichfield</b>	<b>135</b>	<b>478</b>	<b>35</b>	<b>50</b>	<b>25.9%</b>

### BUILDING RESILIENT FAMILIES AND COMMUNITIES (BRFC)

#### Phase 2 Year 2 Eligible Families 2016/17 (Apr - Sept)

Ward	Eligible Families	Count of people	Eligible families with children aged 0-4	Count of Children aged 0-4	Percentage of families with children aged 0-4
All Saints	3	11	0	0	0.0%
Alrewas and Fradley	5	22	0	0	0.0%
Armitage with Handsacre	8	29	2	2	25.0%
Boley Park	2	4	0	0	0.0%
Boney Hay	3	6	1	1	33.3%
Bourne Vale	1	7	1	2	100.0%
Burntwood Central	2	11	0	0	0.0%
Chadsmead	12	52	2	2	16.7%
Chase Terrace	3	8	0	0	0.0%
Chasetown	7	34	3	3	42.9%
Colton and Mavesyn Ridware	1	3	0	0	0.0%
Curborough	8	38	1	1	12.5%
Fazeley	6	24	5	7	83.3%
Hammerwich	0	0	0	0	-
Highfield	1	6	1	1	100.0%
King's Bromley	0	0	0	0	-
Leomansley	6	19	0	0	0.0%
Little Aston	0	0	0	0	-
Longdon	0	0	0	0	-
Mease and Tame	3	14	0	0	0.0%
Shenstone	2	4	0	0	0.0%
St John's	6	22	0	0	0.0%
Stonnall	1	2	0	0	0.0%
Stowe	8	33	3	4	37.5%
Summerfield	11	39	2	3	18.2%
Whittington	1	2	0	0	0.0%
<b>Lichfield</b>	<b>100</b>	<b>390</b>	<b>21</b>	<b>26</b>	<b>21.0%</b>

### EARLY YEARS REACH

#### Early Years Reach, 2014/15 and 2015/16

Ward	2014 Population (All)	2014 Population (Age 0-4)	2014/2015		2015/2016	
			Reach Population	% Reach Population (Age 0-4)	Reach Population	% Reach Population (Age 0-4)
All Saints	3,462	141	57	40.4%	84	59.6%
Alrewas and Fradley	6,042	335	124	37.0%	148	44.2%
Armitage with Handsacre	5,926	361	121	33.5%	226	62.6%
Boley Park	4,914	235	103	43.8%	131	55.7%
Boney Hay	3,124	199	74	37.2%	95	47.7%
Bourne Vale	2,351	78	23	29.5%	45	57.7%
Burntwood Central	3,033	97	42	43.3%	65	67.0%
Chadsmead	3,850	292	134	45.9%	163	55.8%
Chase Terrace	5,128	257	122	47.5%	146	56.8%
Chasetown	3,884	214	99	46.3%	118	55.1%
Colton and Mavesyn Ridware	1,830	74	28	37.8%	36	48.6%
Curborough	4,998	242	112	46.3%	159	65.7%
Fazeley	4,896	291	143	49.1%	148	50.9%
Hammerwich	3,397	138	42	30.4%	70	50.7%
Highfield	3,931	169	62	36.7%	86	50.9%
King's Bromley	1,772	67	22	32.8%	24	35.8%
Leomansley	7,356	428	141	32.9%	199	46.5%
Little Aston	2,921	102	15	14.7%	29	28.4%
Longdon	1,815	50	31	62.0%	37	74.0%
Mease and Tame	3,589	140	55	39.3%	83	59.3%
Shenstone	6,650	426	41	33.3%	72	58.5%
St John's	3,351	123	137	32.2%	202	47.4%
Stonnall	1,481	71	28	39.4%	28	39.4%
Stowe	5,097	225	95	42.2%	124	55.1%
Summerfield	3,818	284	142	50.0%	168	59.2%
Whittington	3,477	169	53	31.4%	101	59.8%
<b>Lichfield</b>	<b>102,093</b>	<b>5,208</b>	<b>2,046</b>	<b>39.3%</b>	<b>2,787</b>	<b>53.5%</b>

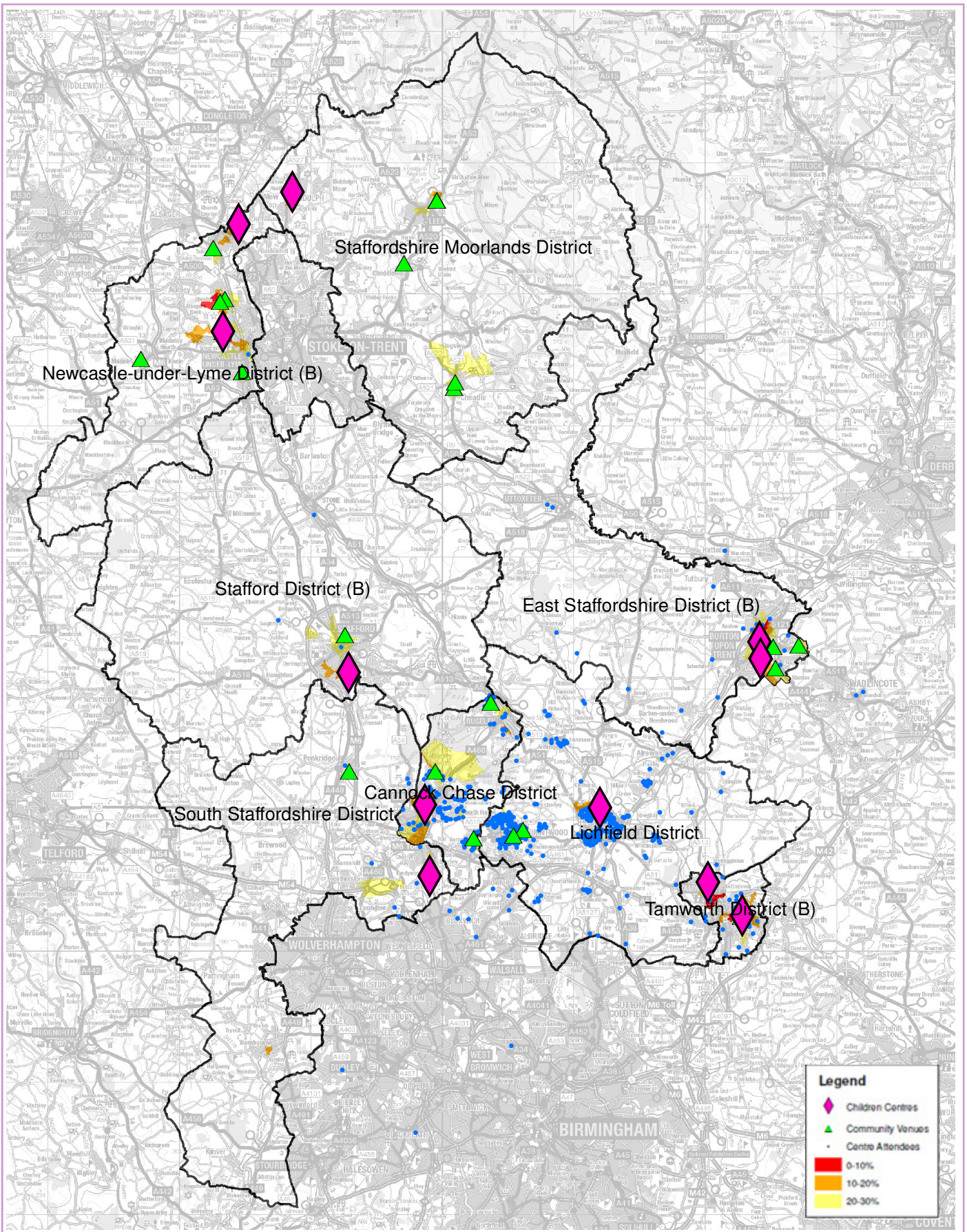
### EARLY YEARS REACH

#### Early Years Reach 0-30%, 2014/15 and 2015/16

Ward	2014/2015		2015/2016	
	% 0-4 Reach	% Reach 0-30% Deprivation	% 0-4 Reach	% Reach 0-30% Deprivation
Boney Hay			58	29.1%
Chadsmead	96	32.9%	116	39.7%
Chasetown	65	30.4%	69	32.2%
Curborough	56	23.1%	70	28.9%
Summerfield			52	18.3%
<b>Lichfield</b>	<b>217</b>	<b>53.4%</b>	<b>365</b>	<b>89.9%</b>

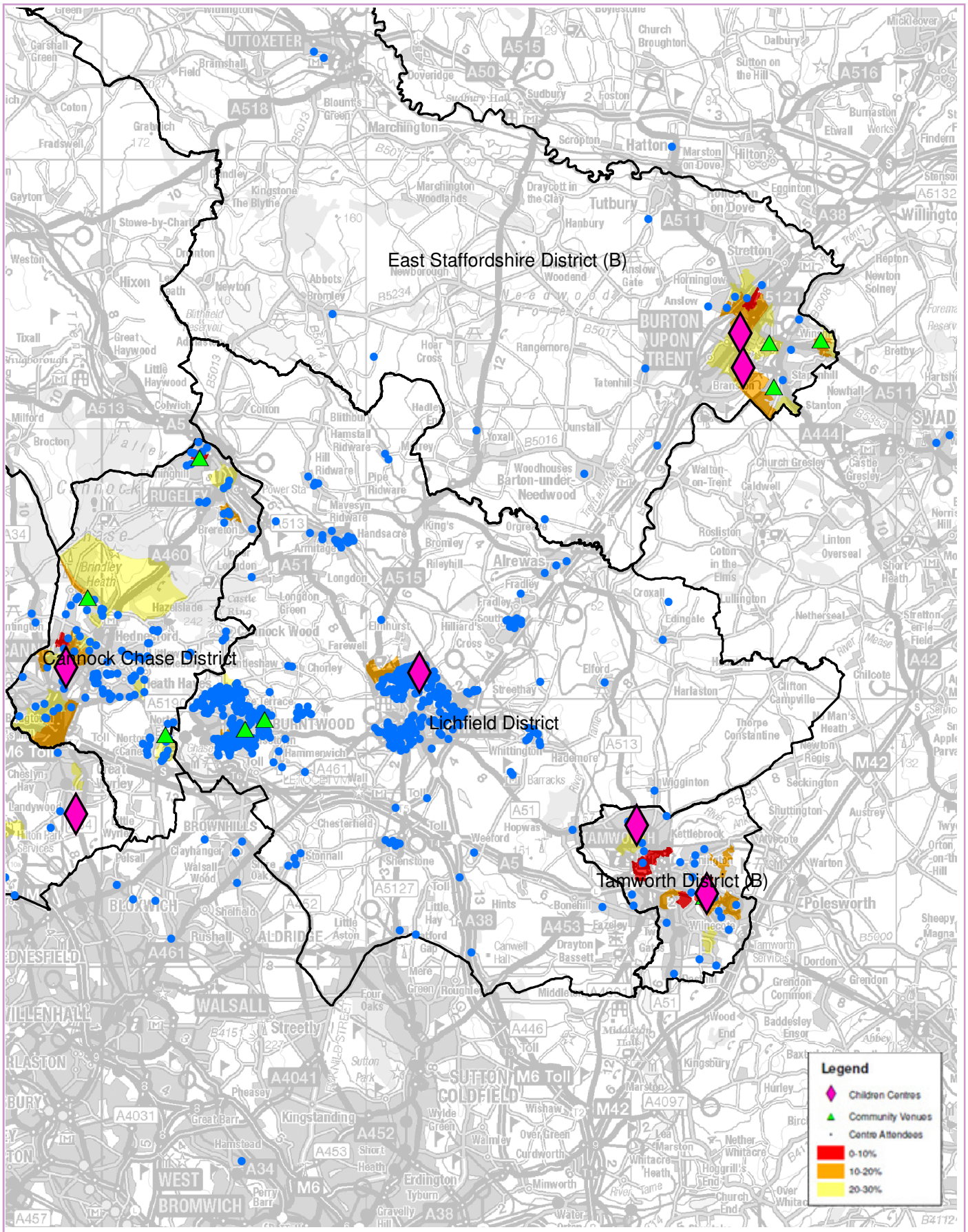


### CHILDREN'S CENTRE ATTENDANCE 2015/16





### CHILDREN'S CENTRE ATTENDANCE 2015/16





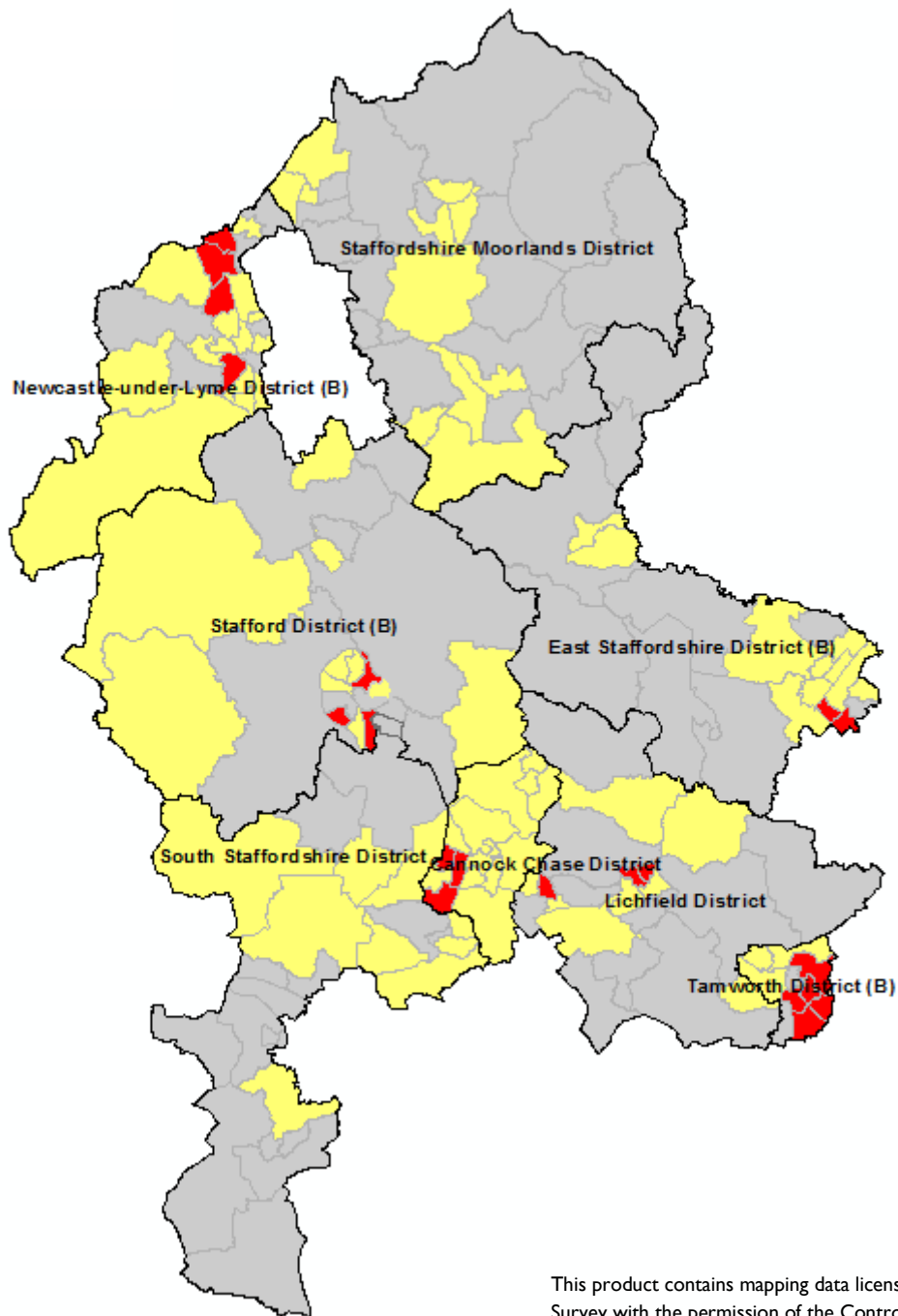
### UNDER-18 CONCEPTIONS

#### Under-18 Teenage Conceptions, 2012-2014

##### Wards

##### Statistical Difference to England

- Higher
- Similar
- Suppressed



This product contains mapping data licensed from Ordnance Survey with the permission of the Controller of Her Majesty's Stationary Office©

Crown Copyright and/or database right 2015. All rights reserved. Licence Number 100019422

### GENERAL FERTILITY RATES

#### General Fertility Rates per 1,000 women aged 15-44, 2011-2014

Ward	2011-2013	2012-2014	Statistical Difference to England
All Saints	51		
Alrewas and Fradley	54	52.5	Lower
Armitage with Handsacre	67	66.6	Similar
Boley Park	58	52.5	Lower
Boney Hay and Central	70	58.3	Similar
Bourne Vale	56	75.5	Similar
Burntwood Central	37		
Chadsmead	63	65.5	Similar
Chase Terrace	61	61.3	Similar
Chasetown	49	54.8	Similar
Colton and The Ridwares	49	46.9	Similar
Curborough	55	53.3	Lower
Fazeley	58	61.8	Similar
Hammerwich with Wall	54	48.4	Lower
Highfield	46	45.7	Lower
King's Bromley	32		
Leomansley	60	53.7	Lower
Little Aston & Stonnall	57	54.5	Similar
Longdon	51	43.8	Lower
Mease Valley	52	47.3	Similar
St John's	52	69.9	Similar
Shenstone	67	42.1	Lower
Stonnall	54		
Stowe	54	52.6	Lower
Summerfield and All Saints	66	62.9	Similar
Whittington and Streethay	47	51.6	Lower
<b>Lichfield</b>	<b>57</b>	<b>57.0</b>	<b>Lower</b>
<b>Staffordshire</b>	<b>58</b>	<b>57.8</b>	
<b>England</b>	<b>64</b>	<b>63.2</b>	

### LOW BIRTHWEIGHT

#### Low Birthweight Babies (under 2,500g) 2011-2014

Ward	2011-2013	2012-2014	Statistical Difference to England
All Saints	8.3%		
Alrewas and Fradley	9.0%	8.4%	Similar
Armitage with Handsacre	4.5%	5.8%	Similar
Boley Park	7.9%	7.1%	Similar
Boney Hay and Central	13.6%	7.8%	Similar
Bourne Vale	23.8%	17.5%	Higher
Burntwood Central	s		
Chadsmead	8.6%	4.4%	Similar
Chase Terrace	9.6%	10.0%	Similar
Chasetown	8.5%	8.6%	Similar
Colton and The Ridwares	s	8.1%	Similar
Curborough	7.4%	4.3%	Similar
Fazeley	6.7%	7.0%	Similar
Hammerwich with Wall	13.8%	5.8%	Similar
Highfield	10.9%	11.2%	Similar
King's Bromley	s		
Leomansley	5.1%	8.5%	Similar
Little Aston & Stonnall	11.8%	13.0%	Similar
Longdon	s	10.0%	Similar
Mease Valley	6.1%	8.1%	Similar
St John's	13.7%	4.8%	Similar
Shenstone	7.1%	10.0%	Similar
Stonnall	s		
Stowe	12.3%	12.1%	Similar
Summerfield and All Saints	7.7%	6.0%	Similar
Whittington and Streethay	5.2%	8.3%	Similar
<b>Lichfield</b>	<b>8.2%</b>	<b>7.8%</b>	<b>Similar</b>
<b>Staffordshire</b>	<b>7.3%</b>	<b>7.2%</b>	<b>Similar</b>
<b>England</b>	<b>7.4%</b>	<b>7.3%</b>	

### BREASTFEEDING PREVALENCE

#### Breastfeeding Prevalence (6-8 weeks) 2012-2015

Ward	2012-2013	2014-2015	Statistical Difference to England
All Saints	46.7%		
Alrewas and Fradley	37.0%	50.0%	Similar
Armitage with Handsacre	35.2%	43.0%	Similar
Boley Park	54.5%	45.9%	Similar
Boney Hay and Central	27.0%	26.3%	Lower
Bourne Vale	45.0%	32.0%	Similar
Burntwood Central	s		
Chadsmead	30.6%	27.3%	Lower
Chase Terrace	30.8%	35.7%	Similar
Chasetown	16.3%	24.3%	Lower
Colton and The Ridwares	66.7%	50.0%	Similar
Curborough	26.8%	28.9%	Similar
Fazeley	30.0%	13.5%	Lower
Hammerwich with Wall	28.6%	s	
Highfield	39.4%	32.0%	Similar
King's Bromley	s		
Leomansley	47.3%	54.4%	Similar
Little Aston & Stonnall	s	s	
Longdon	s	45.5%	Similar
Mease Valley	39.3%	s	
St John's	48.1%	50.7%	Similar
Shenstone	48.8%	61.5%	Similar
Stonnall	s		
Stowe	29.1%	35.2%	Similar
Summerfield and All Saints	23.7%	30.0%	Lower
Whittington and Streethay	31.0%	55.0%	Similar
<b>Lichfield</b>	<b>35.3%</b>	<b>36.3%</b>	<b>Lower</b>
<b>Staffordshire</b>	<b>32.7%</b>	<b>33.5%</b>	<b>Lower</b>
<b>England</b>	<b>47.1%</b>	<b>43.9%</b>	

### THINK2

#### Think2 Childcare Places, Summer 2016

Ward	Eligible Families	Take up by child's address		Take up by address	
		Number	Percentage	Number	Percentage
All Saints	6	7	117%	6	100%
Alrewas and Fradley	12	7	58%	9	75%
Armitage with Handsacre	24	14	58%	11	46%
Boley Park	8	11	138%	4	50%
Boney Hay	12	8	67%	15	125%
Bourne Vale	6	2	33%	6	100%
Burntwood Central	8	7	88%	14	175%
Chadsmead	30	22	73%	9	30%
Chase Terrace	13	5	38%	0	0%
Chasetown	17	15	88%	20	118%
Colton and Mavesyn Ridware	4	2	50%	0	0%
Curborough	18	15	83%	26	144%
Fazeley	19	14	74%	11	58%
Hammerwich	4	4	100%	0	0%
Highfield	8	4	50%	6	75%
King's Bromley	5	4	80%	0	0%
Leomansley	11	8	73%	8	73%
Little Aston	1	1	100%	1	100%
Longdon	2	1	50%	2	100%
Mease and Tame	0	4	-	2	-
Shenstone	3	4	133%	3	100%
St John's	23	14	61%	13	57%
Stonnall	1	1	100%	1	100%
Stowe	13	10	77%	27	208%
Summerfield	28	19	68%	17	61%
Whittington	2	2	100%	5	250%
<b>Lichfield</b>	<b>278</b>	<b>205</b>	<b>74%</b>	<b>216</b>	<b>78%</b>

### SUFFICIENCY

#### Childcare Sufficiency 0-2 years in PVI sector, Summer 2016

Ward	0-2 years				2 years			
	Number of children in district	Places	Vacancies	Vacancies %	Number of children in district	Places	Vacancies	Vacancies %
All Saints	56	3	0	0%	23	19	0	0%
Alrewas and Fradley	117	13	4	31%	54	29	7	24%
Armitage with Handsacre	154	17	9	53%	70	36	4	11%
Boley Park	90	0	0	-	44	7	7	100%
Boney Hay	79	1	1	100%	37	42	16	38%
Bourne Vale	38	30	2	7%	14	57	7	12%
Burntwood Central	36	3	1	33%	25	23	5	22%
Chadsmead	111	1	1	100%	51	8	1	13%
Chase Terrace	104	5	1	20%	48	5	1	20%
Chasetown	71	17	5	29%	46	39	3	8%
Colton and Mavesyn Ridware	27	0	0	-	15	0	0	-
Curborough	91	2	0	0%	46	31	0	0%
Fazeley	99	13	9	69%	55	25	13	52%
Hammerwich	56	2	2	100%	29	2	1	50%
Highfield	48	43	19	44%	41	47	10	21%
King's Bromley	21	6	0	0%	10	6	0	0%
Leomansley	148	74	6	8%	92	67	6	9%
Little Aston	33	3	1	33%	30	40	8	20%
Longdon	17	0	0	-	10	18	4	22%
Mease and Tame	47	1	1	100%	35	13	4	31%
Shenstone	154	0	0	-	100	0	0	-
St John's	41	18	2	11%	32	20	9	45%
Stonnall	21	11	3	27%	16	31	1	3%
Stowe	87	41	0	0%	48	40	4	10%
Summerfield	112	22	9	41%	45	43	15	35%
Whittington	60	20	1	5%	43	24	2	8%
<b>Lichfield</b>	<b>1,918</b>	<b>346</b>	<b>77</b>	<b>22%</b>	<b>1,059</b>	<b>672</b>	<b>128</b>	<b>19%</b>

\*The data provided is a snapshot of occupancy and vacancy data taken in summer term 2016 and may have changed by the time of this publication.

### SUFFICIENCY

#### Childcare Sufficiency 2-4 years in PVI sector, Summer 2016

Ward	Think2				3-4 years			
	Number of children in district	Places	Vacancies	Vacancies %	Number of children in district	Places	Vacancies	Vacancies %
All Saints	8	2	0	0%	62	55	3	5%
Alrewas and Fradley	8	22	7	32%	164	101	32	32%
Armitage with Handsacre	25	17	4	24%	137	53	8	15%
Boley Park	5	4	0	0%	101	45	5	11%
Boney Hay	12	27	16	59%	83	84	16	19%
Bourne Vale	7	7	3	43%	26	81	10	12%
Burntwood Central	6	22	10	45%	36	31	2	6%
Chadsmead	30	10	1	10%	130	47	16	34%
Chase Terrace	11	1	0	0%	105	46	2	4%
Chasetown	18	23	6	26%	97	69	16	23%
Colton and Mavesyn Ridware	4	0	0	-	32	4	0	0%
Curborough	23	32	0	0%	105	73	8	11%
Fazeley	30	13	9	69%	137	44	13	30%
Hammerwich	4	3	1	33%	53	4	2	50%
Highfield	5	11	5	45%	80	43	3	7%
King's Bromley	2	0	0	-	36	6	0	0%
Leomansley	9	12	4	33%	188	92	7	8%
Little Aston	1	11	7	64%	39	75	7	9%
Longdon	3	10	8	80%	23	45	12	27%
Mease and Tame	2	6	4	67%	58	34	6	18%
Shenstone	3	0	0	-	172	0	0	-
St John's	18	40	24	60%	50	76	30	39%
Stonnall	2	11	8	73%	34	46	2	4%
Stowe	15	21	5	24%	90	109	8	7%
Summerfield	25	22	6	27%	127	96	30	31%
Whittington	0	7	2	29%	66	67	12	18%
<b>Lichfield</b>	<b>276</b>	<b>334</b>	<b>130</b>	<b>39%</b>	<b>2,231</b>	<b>1,426</b>	<b>250</b>	<b>18%</b>

\*The data provided is a snapshot of occupancy and vacancy data taken in summer term 2016 and may have changed by the time of this publication.

### CHILDHOOD OBESITY

#### Excess Weight, Children aged 4 - 5 2010 - 2015

Ward	2010 - 2013	2012 - 2015	Statistical Difference to England
All Saints	27.2%		
Alrewas and Fradley	21.0%	20.7%	Similar
Armitage with Handsacre	23.3%	26.0%	Similar
Boley Park	17.1%	15.2%	Lower
Boney Hay and Central	30.0%	32.6%	Higher
Bourne Vale	s	10.5%	Lower
Burntwood Central	28.8%		
Chadsmead	21.1%	30.1%	Higher
Chase Terrace	19.1%	29.5%	Higher
Chasetown	29.9%	33.6%	Higher
Colton and The Ridwares	s	32.6%	Similar
Curborough	23.9%	23.0%	Similar
Fazeley	20.5%	24.0%	Similar
Hammerwich with Wall	24.1%	10.3%	Lower
Highfield	23.1%	24.6%	Similar
King's Bromley	s		
Leomansley	21.9%	19.4%	Similar
Little Aston & Stonnall	20.0%	24.7%	Similar
Longdon	s	s	
Mease Valley	18.5%	16.3%	Similar
St John's	21.4%	20.3%	Similar
Shenstone	17.1%	13.2%	Similar
Stonnall	s		
Stowe	26.3%	24.0%	Similar
Summerfield and All Saints	27.5%	26.1%	Similar
Whittington and Streethay	19.7%	25.8%	Similar
<b>Lichfield</b>	<b>22.7%</b>	<b>23.5%</b>	<b>Similar</b>
<b>Staffordshire</b>	<b>23.4%</b>	<b>23.6%</b>	<b>Higher</b>
<b>England</b>	<b>22.5%</b>	<b>22.2%</b>	



### CHILDHOOD OBESITY

#### Obesity, Children aged 4 - 5 2010/11 - 2012/13

Ward	2010 - 2013	2012 - 2015	Statistical Difference to England
All Saints	15%		
Alrewas and Fradley	8%	8.5%	Similar
Armitage with Handsacre	11%	12.0%	Similar
Boley Park	7%	6.8%	Similar
Boney Hay and Central	13%	13.9%	Similar
Bourne Vale	s	s	
Burntwood Central	14%		
Chadsmead	9%	12.4%	Similar
Chase Terrace	7%	12.2%	Similar
Chasetown	10%	13.4%	Similar
Colton and The Ridwares	s	19.6%	Higher
Curborough	12%	10.6%	Similar
Fazeley	8%	10.3%	Similar
Hammerwich with Wall	s	s	
Highfield	9%	9.5%	Similar
King's Bromley	s		
Leomansley	9%	6.6%	Similar
Little Aston & Stonnall	s	11.7%	Similar
Longdon	s	s	
Mease Valley	s	s	
St John's	s	5.9%	Similar
Shenstone	7%	s	
Stonnall	s		
Stowe	11%	8.7%	Similar
Summerfield and All Saints	7%	9.5%	Similar
Whittington and Streethay	8%	9.8%	Similar
<b>Lichfield</b>	<b>9.0%</b>	<b>9.3%</b>	<b>Similar</b>
<b>Staffordshire</b>	<b>9.0%</b>	<b>9.2%</b>	<b>Similar</b>
<b>England</b>	<b>9.0%</b>	<b>9.3%</b>	

### EARLY YEARS FOUNDATION STAGE PROFILE

#### Pupils achieving Good Level of Development, 2016

Ward	GLD	Gender		Free School Meals		SEN		
		Male	Female	FSM	Non-FSM	No SEN (N)	Education Health Care Plan or Statement (E) or (S)	SEN Support (K)
All Saints	64.9%	75.0%	57.1%	100.0%	63.9%	66.7%	0.0%	
Alrewas and Fradley	77.4%	69.2%	84.4%	100.0%	76.8%	79.3%	0.0%	0.0%
Armitage with Handsacre	60.9%	53.3%	66.7%	33.3%	62.5%	65.1%	0.0%	0.0%
Boley Park	88.5%	81.8%	96.4%	100.0%	88.3%	95.9%	0.0%	100.0%
Boney Hay	69.7%	56.3%	82.4%	50.0%	74.1%	71.0%		0.0%
Bourne Vale	69.2%	50.0%	100.0%		69.2%	69.2%		
Burntwood Central	71.4%	75.0%	60.0%	100.0%	68.4%	75.0%	0.0%	
Chadsmead	62.9%	54.3%	71.4%	64.7%	62.3%	66.7%	0.0%	0.0%
Chase Terrace	73.2%	59.1%	82.4%	75.0%	73.1%	72.2%	100.0%	100.0%
Chasetown	63.0%	64.0%	61.9%	25.0%	66.7%	65.1%		0.0%
Colton and Mavesyn Ridware	93.8%	90.0%	100.0%		93.3%	93.3%		
Curborough	68.6%	59.1%	75.9%	50.0%	74.4%	68.0%		
Fazeley	71.9%	63.3%	81.5%	55.6%	75.0%	74.5%		0.0%
Hammerwich	71.4%	75.0%	69.2%	0.0%	75.0%	71.4%		
Highfield	82.5%	72.2%	90.9%	0.0%	84.2%	86.5%	0.0%	
King's Bromley	57.1%	66.7%	50.0%		57.1%	57.1%		
Leomansley	82.2%	80.7%	84.1%	50.0%	82.7%	82.7%	0.0%	
Little Aston	83.3%	66.7%	100.0%		90.9%	90.9%		
Longdon	35.7%	20.0%	75.0%		30.8%	30.8%		
Mease and Tame	65.6%	71.4%	61.1%	50.0%	65.5%	63.3%		100.0%
Shenstone	78.3%	70.0%	84.6%		78.3%	81.8%		0.0%
St John's	75.0%	70.3%	80.0%	100.0%	73.9%	75.8%		50.0%
Stonnall	68.4%	71.4%	66.7%	100.0%	66.7%	76.5%	0.0%	
Stowe	72.1%	57.1%	86.4%	80.0%	73.0%	73.1%	0.0%	33.3%
Summerfield	71.7%	64.5%	79.3%	40.0%	74.5%	75.4%	0.0%	
Whittington	83.3%	73.7%	94.1%		85.3%	84.8%		
<b>Lichfield</b>	<b>72.8%</b>							
<b>Staffordshire</b>	<b>73.8%</b>	<b>66.9%</b>	<b>80.9%</b>	<b>58.4%</b>	<b>75.3%</b>	<b>77.6%</b>	<b>2.0%</b>	<b>28.0%</b>
<b>England</b>	<b>69.0%</b>							