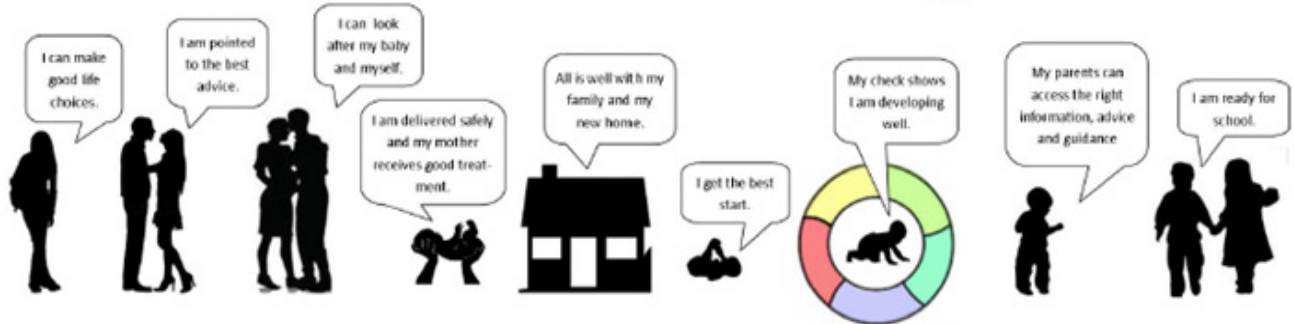


SOUTH STAFFORDSHIRE DISTRICT PROFILE

TEENAGER CONCEPTION PREGNANCY BIRTH HOME 0-6 WEEKS 1 YEAR 2 YEARS TODDLER (3-4 YEARS) FIRST DAY OF SCHOOL

★ PHSE ★ CONTRACEPTIVE ADVICE ★ HEALTH PREGNANCY CHECK ★ 14 DAY NEW BIRTH VISIT ★ 6 WEEK CHECK ★ IMMUNISATION ★ 12 MONTH AGES & STAGES QUESTIONNAIRE / THINK 2 ★ NURSERY EDUCATION FUND (3-4 ENTITLEMENT) ★ EYFS KS1



DECEMBER 2016

CONTENTS PAGE

| | |
|--|----------|
| Introduction | 3 |
| Summary | 4 |
| Population | |
| Ward Boundaries | 6 |
| Under 5 Population..... | 7 |
| Household Composition | 8 |
| Worklessness..... | 9 |
| Children’s Social Care Groups..... | 10 |
| Building Resilient Families and Communities (BRFC) | 11 |
| Early Years Reach..... | 13 |
| Children Centre Attendance Map..... | 15 |
| Conception | |
| Under 18 Conception (District map)..... | 17 |
| Birth | |
| General Fertility Rates | 18 |
| Low Birthweight | 19 |
| 0-6 Weeks | |
| Breastfeeding Prevalence..... | 20 |
| 1 Year and 2 Year | |
| Think2 | 21 |
| Sufficiency..... | 22 |
| Toddler | |
| Sufficiency..... | 23 |
| First Day at School | |
| Childhood Obesity..... | 24 |
| Early Years Foundation Stage Profile | 26 |

Contact for Further Information

Report compiled by Operational Intelligence & Performance Team
Claire Makinson - Performance Manager, 01785 277067
Farhana Patel - Performance Officer, 01785 277798

INTRODUCTION

The purpose of the Early Years District Profile is to bring together a wide range of indicators for each district. It provides the commissioners with a robust evidence base across a range of health and wellbeing issues to help identify priority areas to target and place services in appropriate areas.

The report pulls together information from various sources to present a picture of the health and wellbeing of children aged 0-4, following through the Best Start Pathway.

The data is presented and displayed at Ward Level with comparisons made with Staffordshire and England. Information used in the report is the latest available at the time of writing.

Health and social needs are complex and it is unlikely that there will be a single factor which is responsible for the particular situation in each local area. Therefore, it is important that no single item of information is treated in isolation. Instead the various pieces of data and evidence should be used together to give a better picture of the needs of children and young people in the local community.

We aim to produce this annually with the next one being due November 2016 to support the Districts with their Local Authority annual conversations.

SUMMARY

South Staffordshire District comprises of 25 wards, with 3 Lower Super Output Areas of 0-30% deprivation spread across 3 wards. The population of children aged 0-4 has seen a slight increase from 2013, from 4,932 to 5,004 but the proportion of children aged 0-4 has remained at 4.5%; this proportion is still below the Staffordshire and England average. The proportion of children aged under 5 in 10 wards has increased since 2013, 7 wards have stayed the same and 8 wards have reduced.

For families with dependents, married couples are the largest group in the district accounting for 16.8% of households; the proportion of households that are lone parents varies across the wards from 2.3% in Himley & Swindon to 8.1% in Bilbrook, giving an average of 5.1% of all lone households that have children under the age of 5 in South Staffordshire.

The numbers of children living in out of work benefit clamant households has decreased year on year since 2012 across the whole of South Staffordshire, most noticeably in Codsall North with nearly a 90% decrease between 2012 and 2015.

In terms of Children's Social Care groups, the numbers of children either in need, subject of Child Protection or Looked After are very low in South Staffordshire and as such the data has been suppressed. The largest proportion of Children in Need are in Great Wyrley Town with Brewod & Coven, Essington and Huntington & Hatherton having similar numbers. Penkridge West has the largest proportion of children who are subject of a Child Protection Plan, accounting for 5 of the 14 children across the district, and there are a total of 5 children across South Staffordshire who are Looked After.

The Early Years Reach across South Staffordshire has shown an improvement of 7.7 percentage points between 2014/15 and 2015/16 equating to an additional 382 children aged 0-4. Cheslyn Hay North & Saredon together with Great Wyrley Town have seen the highest increases in the Reach with an improvement of 23.3 and 21.5 percentage points respectively; however 6 of the 25 wards have seen either no improvement or a reduction from the previous year. All 3 of the wards with areas of 0-30% deprivation saw an increase in the Reach, with Wombourne South West showing the largest increase of 32.7 percentage points; giving South Staffordshire a 0-30% Reach figure of 67.2%, equivalent to a 16.3 percentage point increase from 2014/15.

Attendance at Children Centre activities in South Staffordshire shows the majority of attendees are from the local area with a large proportion of families travelling from Cannock. A small number of attendees are also seen to be travelling from outside of Staffordshire.

SUMMARY

The general fertility rates across the South Staffordshire district are statistically lower than England at 52.4 per 1,000 women aged 15-44 compared to 63.2 per 1,000 for England and 57.8 per 1,000 for Staffordshire. The highest general fertility rates are in Huntington & Hatherton with 72.8 per 1,000 and the lowest is in Trysull & Seisdon with 36.2.

5.3% of babies born in South Staffordshire are born with a low birthweight, which is statistically lower than both the Staffordshire and England average of 7.2% and 7.3% respectively. This is a marginal decrease from 2011/2013 figures. The proportion of babies who are born with a low birthweight ranges from 2.5% in Wombourne North & Lower Penn to 13.8% in Perton Dippons.

Data as at Summer 2016 shows the take up of Think2 childcare places averages at 77% in South Staffordshire. In terms of sufficiency for Think2 places, there is a vacancy rate of 45%, equivalent to 175 vacancies.

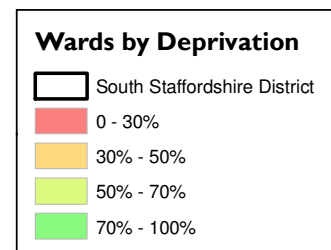
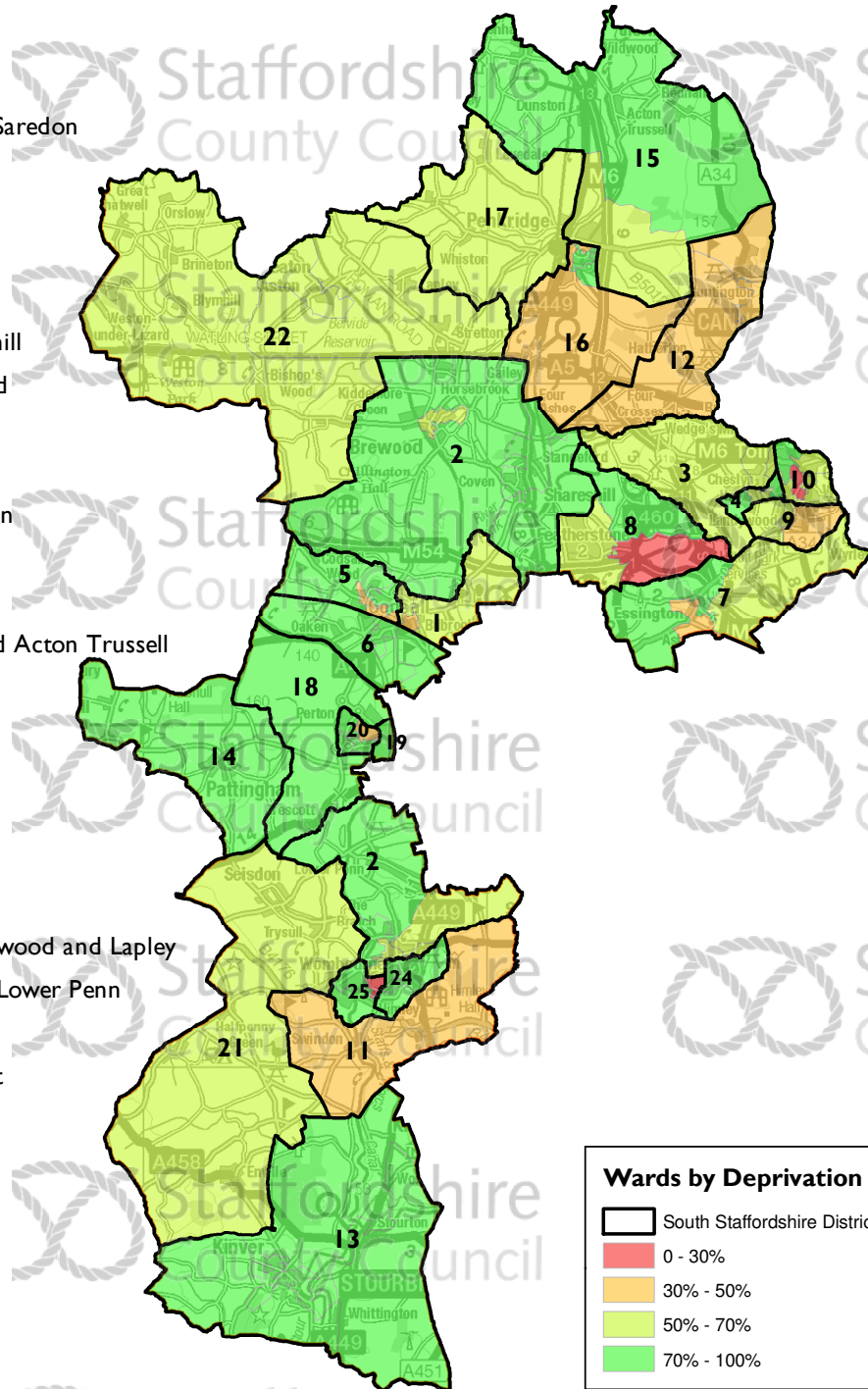
Overall Staffordshire has a marginally higher rate than England for children who are in reception class with excess weight, whereas the rate for South Staffordshire is statistically higher than England at 26%. The majority of the wards across South Staffordshire have a similar rate to England however; the ward with the highest rate is Great Wyrley Town where the rate is statistically higher at 32.1%, compared to Perton East which has the lowest rate across the district with 15.1%. Children of the same age group who are classed as obese is similar to England across the majority of wards in South Staffordshire however, the proportion of obese children is statistically higher than England in Bilbrook and Cheslyn Hay North & Saredon, although overall South Staffordshire has seen the proportion of obese children nearly half between the period 2012-2013 to 2012-2015.

The proportion of children in South Staffordshire with a Good Level of Development at the Early Years Foundation Stage is higher than both Staffordshire and England by 3.5 and 8.3 percentage points respectively. The Good Level of Development overall in 2016 was 77.3% with rates varying across the wards from 50% in Himley & Swindon and 95% in Perton East. Generally girls perform significantly better than boys apart from in the wards of Bilbrook, Penkridge North East & Acton Trussell, Perton East and Wombourne North & Lower Penn where a greater number of boys achieved a Good Level of Development.

WARD BOUNDARIES

Ward Boundaries

- 1 Bilbrook
- 2 Brewwood and Coven
- 3 Cheslyn Hay North and Saredon
- 4 Cheslyn Hay South
- 5 Codsall North
- 6 Codsall South
- 7 Essington
- 8 Featherstone and Shareshill
- 9 Great Wyrley Landywood
- 10 Great Wyrley Town
- 11 Himley and Swindon
- 12 Huntington and Hatherton
- 13 Kinver
- 14 Pattingham and Patshull
- 15 Penkridge North East and Acton Trussell
- 16 Penkridge South East
- 17 Penkridge West
- 18 Perton Dippons
- 19 Perton East
- 20 Perton Lakeside
- 21 Trysull and Seisdon
- 22 Wheaton Aston, Bishopswood and Lapley
- 23 Wombourne North and Lower Penn
- 24 Wombourne South East
- 25 Wombourne South West



This product contains mapping data licensed from Ordnance Survey with the permission of the Controller of Her Majesty's Stationary Office©

Crown Copyright and/or database right 2015. All rights reserved.
Licence Number 1 000 19422

POPULATION

Proportion of children aged 0-4 , 2013 - 2015

| Ward | 2013 | | | 2014 | | | 2015 | | |
|---|-------------------|------------------|--------------------|-------------------|------------------|--------------------|-------------------|------------------|--------------------|
| | Total Population | Total under 5 | Percentage under 5 | Total Population | Total under 5 | Percentage under 5 | Total Population | Total under 5 | Percentage under 5 |
| Bilbrook | 4,304 | 267 | 6.2% | 4,283 | 249 | 5.8% | 4,249 | 223 | 5.2% |
| Brewood and Coven | 6,556 | 273 | 4.2% | 6,642 | 280 | 4.2% | 6,672 | 277 | 4.2% |
| Cheslyn Hay North and Saredon | 4,346 | 211 | 4.9% | 4,328 | 193 | 4.5% | 4,337 | 211 | 4.9% |
| Cheslyn Hay South | 3,721 | 142 | 3.8% | 3,727 | 135 | 3.6% | 3,704 | 129 | 3.5% |
| Codsall North | 4,130 | 187 | 4.5% | 4,159 | 191 | 4.6% | 4,143 | 188 | 4.5% |
| Codsall South | 4,128 | 185 | 4.5% | 4,134 | 181 | 4.4% | 4,123 | 186 | 4.5% |
| Essington | 5,130 | 241 | 4.7% | 5,093 | 252 | 4.9% | 5,179 | 240 | 4.6% |
| Featherstone and Shareshill | 7,274 | 262 | 3.6% | 7,211 | 238 | 3.3% | 7,164 | 236 | 3.3% |
| Great Wyrley Landywood | 4,967 | 250 | 5.0% | 4,960 | 259 | 5.2% | 4,999 | 259 | 5.2% |
| Great Wyrley Town | 6,110 | 271 | 4.4% | 6,283 | 293 | 4.7% | 6,356 | 338 | 5.3% |
| Himley and Swindon | 2,041 | 59 | 2.9% | 2,017 | 62 | 3.1% | 2,035 | 70 | 3.4% |
| Huntington and Hatherton | 5,463 | 413 | 7.6% | 5,569 | 423 | 7.6% | 5,558 | 384 | 6.9% |
| Kinver | 7,245 | 262 | 3.6% | 7,383 | 275 | 3.7% | 7,210 | 272 | 3.8% |
| Pattingham and Patshull | 2,301 | 106 | 4.6% | 2,218 | 103 | 4.6% | 2,252 | 104 | 4.6% |
| Penkridge North East and Acton Trussell | 3,829 | 162 | 4.2% | 3,841 | 157 | 4.1% | 3,761 | 150 | 4.0% |
| Penkridge South East | 4,499 | 187 | 4.2% | 4,437 | 198 | 4.5% | 4,420 | 204 | 4.6% |
| Penkridge West | 2,050 | 78 | 3.8% | 2,093 | 83 | 4.0% | 2,181 | 81 | 3.7% |
| Perton Dippons | 1,923 | 77 | 4.0% | 2,002 | 82 | 4.1% | 2,020 | 92 | 4.6% |
| Perton East | 2,220 | 107 | 4.8% | 2,222 | 121 | 5.4% | 2,218 | 114 | 5.1% |
| Perton Lakeside | 6,447 | 371 | 5.8% | 6,489 | 400 | 6.2% | 6,446 | 389 | 6.0% |
| Trysull and Seisdon | 2,220 | 58 | 2.6% | 2,211 | 54 | 2.4% | 2,222 | 57 | 2.6% |
| Wheaton Aston, Bishopswood and Lapley | 4,171 | 138 | 3.3% | 4,216 | 128 | 3.0% | 4,192 | 139 | 3.3% |
| Wombourne North and Lower Penn | 6,635 | 234 | 3.5% | 6,559 | 241 | 3.7% | 6,671 | 252 | 3.8% |
| Wombourne South East | 3,875 | 146 | 3.8% | 3,870 | 134 | 3.5% | 3,878 | 139 | 3.6% |
| Wombourne South West | 4,706 | 245 | 5.2% | 4,745 | 262 | 5.5% | 4,736 | 270 | 5.7% |
| South Staffordshire | 110,291 | 4,932 | 4.5% | 110,692 | 4,994 | 4.5% | 110,726 | 5,004 | 4.5% |
| Staffordshire | 857,007 | 46,099 | 5.4% | 860,165 | 45,619 | 5.3% | 862,562 | 45,344 | 5.3% |
| England | 56,948,229 | 3,592,907 | 6.3% | 54,316,618 | 3,430,957 | 6.3% | 54,779,872 | 3,425,796 | 6.3% |

HOUSEHOLD COMPOSITION

Household Composition - Families with Dependants, 2011

| Ward | Number of all Households | Married Couple | | Cohabiting Couple | | Lone Parent | | Same-Sex Civil | | Other Households | |
|---|--------------------------|--------------------|---------------------|--------------------|---------------------|--------------------|---------------------|--------------------|---------------------|--------------------|---------------------|
| | | Number of families | % of all households | Number of families | % of all households | Number of families | % of all households | Number of families | % of all households | Number of families | % of all households |
| Bilbrook | 1,902 | 260 | 13.7% | 84 | 4.4% | 155 | 8.1% | 0 | 0.0% | 34 | 1.8% |
| Brewood and Coven | 2,940 | 449 | 15.3% | 82 | 2.8% | 130 | 4.4% | 0 | 0.0% | 36 | 1.2% |
| Cheslyn Hay North and Saredon | 1,745 | 278 | 15.9% | 91 | 5.2% | 103 | 5.9% | 0 | 0.0% | 37 | 2.1% |
| Cheslyn Hay South | 1,517 | 299 | 19.7% | 61 | 4.0% | 76 | 5.0% | 0 | 0.0% | 37 | 2.4% |
| Codsall North | 1,789 | 261 | 14.6% | 51 | 2.9% | 85 | 4.8% | 0 | 0.0% | 29 | 1.6% |
| Codsall South | 1,627 | 320 | 19.7% | 54 | 3.3% | 50 | 3.1% | 0 | 0.0% | 35 | 2.2% |
| Essington | 1,866 | 330 | 17.7% | 96 | 5.1% | 91 | 4.9% | 0 | 0.0% | 49 | 2.6% |
| Featherstone and Sharesill | 1,989 | 373 | 18.8% | 107 | 5.4% | 114 | 5.7% | 0 | 0.0% | 45 | 2.3% |
| Great Wyrley Landywood | 1,963 | 328 | 16.7% | 95 | 4.8% | 142 | 7.2% | 0 | 0.0% | 49 | 2.5% |
| Great Wyrley Town | 2,548 | 366 | 14.4% | 94 | 3.7% | 131 | 5.1% | 0 | 0.0% | 49 | 1.9% |
| Himley and Swindon | 875 | 101 | 11.5% | 16 | 1.8% | 20 | 2.3% | 0 | 0.0% | 13 | 1.5% |
| Huntington and Hatherton | 2,034 | 340 | 16.7% | 158 | 7.8% | 154 | 7.6% | 0 | 0.0% | 54 | 2.7% |
| Kinver | 3,074 | 489 | 15.9% | 93 | 3.0% | 125 | 4.1% | 0 | 0.0% | 47 | 1.5% |
| Pattingham and Patshull | 953 | 162 | 17.0% | 26 | 2.7% | 47 | 4.9% | 0 | 0.0% | 12 | 1.3% |
| Penkridge North East and Acton Trussell | 1,619 | 251 | 15.5% | 47 | 2.9% | 53 | 3.3% | 0 | 0.0% | 41 | 2.5% |
| Penkridge South East | 1,766 | 365 | 20.7% | 80 | 4.5% | 98 | 5.5% | 0 | 0.0% | 36 | 2.0% |
| Penkridge West | 879 | 135 | 15.4% | 30 | 3.4% | 47 | 5.3% | 0 | 0.0% | 15 | 1.7% |
| Perton Dippons | 776 | 131 | 16.9% | 25 | 3.2% | 41 | 5.3% | 0 | 0.0% | 23 | 3.0% |
| Perton East | 831 | 218 | 26.2% | 37 | 4.5% | 41 | 4.9% | 0 | 0.0% | 16 | 1.9% |
| Perton Lakeside | 2,804 | 485 | 17.3% | 125 | 4.5% | 189 | 6.7% | 0 | 0.0% | 37 | 1.3% |
| Trysull and Seisdon | 887 | 155 | 17.5% | 24 | 2.7% | 26 | 2.9% | 0 | 0.0% | 21 | 2.4% |
| Wheaton Aston, Bishopswood and Lapley | 1,728 | 285 | 16.5% | 51 | 3.0% | 75 | 4.3% | 0 | 0.0% | 27 | 1.6% |
| Wombourne North and Lower Penn | 2,649 | 501 | 18.9% | 94 | 3.5% | 93 | 3.5% | 0 | 0.0% | 50 | 1.9% |
| Wombourne South East | 1,759 | 241 | 13.7% | 46 | 2.6% | 61 | 3.5% | 0 | 0.0% | 20 | 1.1% |
| Wombourne South West | 1,938 | 335 | 17.3% | 91 | 4.7% | 131 | 6.8% | 0 | 0.0% | 31 | 1.6% |
| South Staffordshire | 44,458 | 7458 | 16.8% | 1,758 | 4.0% | 2,278 | 5.1% | 0 | 0.0% | 843 | 1.9% |
| Staffordshire | 355,263 | 56,756 | 16.0% | 16,242 | 4.6% | 21,016 | 5.9% | 30 | 0.01% | 6,833 | 1.9% |
| England | 22,063,368 | 3,373,005 | 15.3% | 890,780 | 4.0% | 1,573,255 | 7.1% | 2,885 | 0.01% | 584,016 | 2.6% |

Remainder of the population is made up of households with no children

WORKLESSNESS

Under 5 population living in out-of-work benefit claimant households, 2012-2015

| Ward | 2012 | | 2013 | | 2014 | | 2015 | |
|---|-------------------|--------------------------|-------------------|--------------------------|-------------------|--------------------------|-------------------|--------------------------|
| | No. of Households | No. of children aged 0-4 | No. of Households | No. of children aged 0-4 | No. of Households | No. of children aged 0-4 | No. of Households | No. of children aged 0-4 |
| Bilbrook | 90 | 70 | 95 | 65 | 90 | 55 | 75 | 40 |
| Brewood and Coven | 65 | 55 | 45 | 25 | 45 | 20 | 40 | 25 |
| Cheslyn Hay North and Saredon | 50 | 40 | 55 | 45 | 45 | 35 | 45 | 30 |
| Cheslyn Hay South | 45 | 25 | 40 | 20 | 40 | 20 | 40 | 15 |
| Codsall North | 225 | 165 | 35 | 25 | 35 | 25 | 35 | 20 |
| Codsall South | 80 | 50 | 15 | 10 | 15 | 15 | 15 | 10 |
| Essington | 75 | 40 | 75 | 50 | 70 | 45 | 70 | 45 |
| Featherstone and Sharesill | 15 | 5 | 80 | 35 | 70 | 30 | 75 | 40 |
| Great Wyrley Landywood | 125 | 95 | 75 | 45 | 60 | 35 | 60 | 30 |
| Great Wyrley Town | 20 | 15 | 80 | 45 | 75 | 55 | 75 | 50 |
| Himley and Swindon | 70 | 40 | 15 | 5 | 15 | 5 | 15 | 10 |
| Huntington and Hatherton | 65 | 40 | 150 | 110 | 135 | 115 | 115 | 85 |
| Kinver | 120 | 80 | 45 | 20 | 35 | 15 | 40 | 20 |
| Pattingham and Patshull | 25 | 15 | 25 | 15 | 15 | 5 | 15 | 5 |
| Penkridge North East and Acton Trussell | 95 | 65 | 40 | 20 | 30 | 10 | 30 | 15 |
| Penkridge South East | 30 | 20 | 25 | 10 | 30 | 10 | 30 | 20 |
| Penkridge West | 70 | 40 | 20 | 10 | 25 | 15 | 20 | 10 |
| Perton Dippons | 5 | 5 | 10 | 5 | 15 | 10 | 20 | 10 |
| Perton East | 70 | 35 | 15 | 5 | 10 | 5 | 10 | 5 |
| Perton Lakeside | 65 | 50 | 85 | 50 | 90 | 75 | 65 | 45 |
| Trysull and Seisdon | 120 | 80 | 15 | 5 | 20 | 10 | 15 | 10 |
| Wheaton Aston, Bishopswood and Lapley | 35 | 15 | 25 | 15 | 30 | 15 | 25 | 15 |
| Wombourne North and Lower Penn | 20 | 5 | 35 | 20 | 30 | 10 | 35 | 15 |
| Wombourne South East | 110 | 80 | 25 | 15 | 25 | 15 | 15 | 10 |
| Wombourne South West | 135 | 75 | 90 | 55 | 80 | 60 | 70 | 50 |
| South Staffordshire | 1,825 | 1,205 | 1,215 | 725 | 1,130 | 710 | 1,050 | 630 |
| Staffordshire | 14,790 | 9,235 | 12,875 | 8,050 | 11,720 | 7,500 | 10,735 | 6,605 |
| England | 1,340,420 | 839,965 | 1,268,335 | 805,100 | 1,161,325 | 735,420 | 1,066,540 | 669,360 |

CHILDREN'S SOCIAL CARE GROUPS

Children's Social Care Groups 2015//2016

| Ward | Children aged 0-4 | | | Percentage children aged 0-4 | | |
|---|-------------------|-----------|----------|------------------------------|-------------|-------------|
| | CIN | CP | LAC | CIN | CP | LAC |
| Bilbrook | s | | | 4% | | |
| Brewood and Coven | 9 | | | 10% | | |
| Cheslyn Hay North and Saredon | s | | s | 3% | | 40% |
| Cheslyn Hay South | s | | | 1% | | |
| Codsall North | s | s | | 4% | 14% | |
| Codsall South | s | | | 2% | | |
| Essington | 9 | | | 10% | | |
| Featherstone and Sharesill | 5 | | | 6% | | |
| Great Wyrley Landywood | s | | | 4% | | |
| Great Wyrley Town | 10 | | | 11% | | |
| Himley and Swindon | s | | | 1% | | |
| Huntington and Hatherton | 9 | s | s | 10% | 21% | 20% |
| Kinver | s | | | 3% | | |
| Pattingham and Patshull | s | | | 1% | | |
| Penkridge North East and Acton Trussell | s | | | 1% | | |
| Penkridge South East | s | | s | 3% | | 20% |
| Penkridge West | s | 5 | | 3% | 36% | |
| Perton Lakeside | s | s | | 4% | 7% | |
| Trysull and Seisdon | s | s | | 2% | 7% | |
| Wheaton Aston, Bishopswood and Lapley | s | s | | 2% | 7% | |
| Wombourne North and Lower Penn | 7 | | s | 8% | | 20% |
| Wombourne South East | s | s | | 1% | 7% | |
| Wombourne South West | s | | | 2% | | |
| South Staffordshire | 90 | 14 | 5 | 100% | 100% | 100% |

BUILDING RESILIENT FAMILIES AND COMMUNITIES (BRFC)

Phase 2 Year 1 Eligible Families 2015/16

| Ward | Eligible Families | Count of people | Eligible families with children aged 0-4 | Count of Children aged 0-4 | Percentage of families with children aged 0-4 |
|---|-------------------|-----------------|--|----------------------------|---|
| Bilbrook | 12 | 50 | 7 | 9 | 58.3% |
| Brewood and Coven | 13 | 37 | 2 | 2 | 15.4% |
| Cheslyn Hay North and Saredon | 5 | 16 | 2 | 4 | 40.0% |
| Cheslyn Hay South | 13 | 37 | 2 | 2 | 15.4% |
| Codsall North | 6 | 19 | 1 | 1 | 16.7% |
| Codsall South | 3 | 12 | 1 | 2 | 33.3% |
| Essington | 8 | 36 | 2 | 3 | 25.0% |
| Featherstone and Shareshill | 12 | 41 | 1 | 1 | 8.3% |
| Great Wyrley Landywood | 8 | 29 | 3 | 3 | 37.5% |
| Great Wyrley Town | 12 | 47 | 10 | 17 | 83.3% |
| Himley and Swindon | 3 | 14 | 2 | 2 | 66.7% |
| Huntington and Hatherton | 27 | 83 | 7 | 9 | 25.9% |
| Kinver | 4 | 17 | 1 | 3 | 25.0% |
| Pattingham and Patshull | 1 | 4 | 0 | 0 | 0.0% |
| Penkridge North East and Acton Trussell | 7 | 16 | 3 | 2 | 42.9% |
| Penkridge South East | 8 | 24 | 0 | 1 | 0.0% |
| Penkridge West | 1 | 4 | 0 | 0 | 0.0% |
| Perton Dippons | 2 | 7 | 1 | 1 | 50.0% |
| Perton East | 1 | 1 | 0 | 0 | 0.0% |
| Perton Lakeside | 12 | 38 | 2 | 2 | 16.7% |
| Trysull and Seisdon | 1 | 4 | 0 | 0 | 0.0% |
| Wheaton Aston, Bishopswood and Lapley | 8 | 28 | 4 | 5 | 50.0% |
| Wombourne North and Lower Penn | 6 | 16 | 2 | 2 | 33.3% |
| Wombourne South East | 6 | 19 | 2 | 2 | 33.3% |
| Wombourne South West | 13 | 45 | 4 | 5 | 30.8% |
| South Staffordshire | 192 | 644 | 59 | 78 | 30.7% |

BUILDING RESILIENT FAMILIES AND COMMUNITIES (BRFC)

Phase 2 Year 2 Eligible Families 2016/17 (Apr - Sept)

| Ward | Eligible Families | Count of people | Eligible families with children aged 0-4 | Count of Children aged 0-4 | Percentage of families with children aged 0-4 |
|---|-------------------|-----------------|--|----------------------------|---|
| Bilbrook | 4 | 15 | 1 | 1 | 25.0% |
| Brewood and Coven | 3 | 10 | 1 | 1 | 33.3% |
| Cheslyn Hay North and Saredon | 3 | 11 | 0 | 0 | 0.0% |
| Cheslyn Hay South | 5 | 24 | 2 | 2 | 40.0% |
| Codsall North | 0 | 0 | 0 | 0 | - |
| Codsall South | 1 | 4 | 0 | 0 | 0.0% |
| Essington | 5 | 22 | 2 | 2 | 40.0% |
| Featherstone and Sharesill | 3 | 14 | 1 | 2 | 33.3% |
| Great Wyrley Landywood | 8 | 33 | 1 | 1 | 12.5% |
| Great Wyrley Town | 6 | 23 | 4 | 4 | 66.7% |
| Himley and Swindon | 1 | 4 | 0 | 0 | 0.0% |
| Huntington and Hatherton | 8 | 23 | 2 | 3 | 25.0% |
| Kinver | 2 | 12 | 0 | 0 | 0.0% |
| Pattingham and Patshull | 1 | 4 | 1 | 1 | 100.0% |
| Penkridge North East and Acton Trussell | 1 | 4 | 0 | 0 | 0.0% |
| Penkridge South East | 3 | 11 | 0 | 0 | 0.0% |
| Penkridge West | 1 | 2 | 0 | 0 | 0.0% |
| Perton Dippons | 2 | 10 | 0 | 0 | 0.0% |
| Perton East | 0 | 0 | 0 | 0 | - |
| Perton Lakeside | 6 | 22 | 0 | 0 | 0.0% |
| Trysull and Seisdon | 0 | 0 | 0 | 0 | - |
| Wheaton Aston, Bishopswood and Lapley | 1 | 4 | 0 | 0 | 0.0% |
| Wombourne North and Lower Penn | 6 | 26 | 1 | 2 | 16.7% |
| Wombourne South East | 1 | 5 | 0 | 0 | 0.0% |
| Wombourne South West | 1 | 3 | 0 | 0 | 0.0% |
| South Staffordshire | 72 | 286 | 16 | 19 | 22.2% |

EARLY YEARS REACH

Early Years Reach, 2014/15 and 2015/16

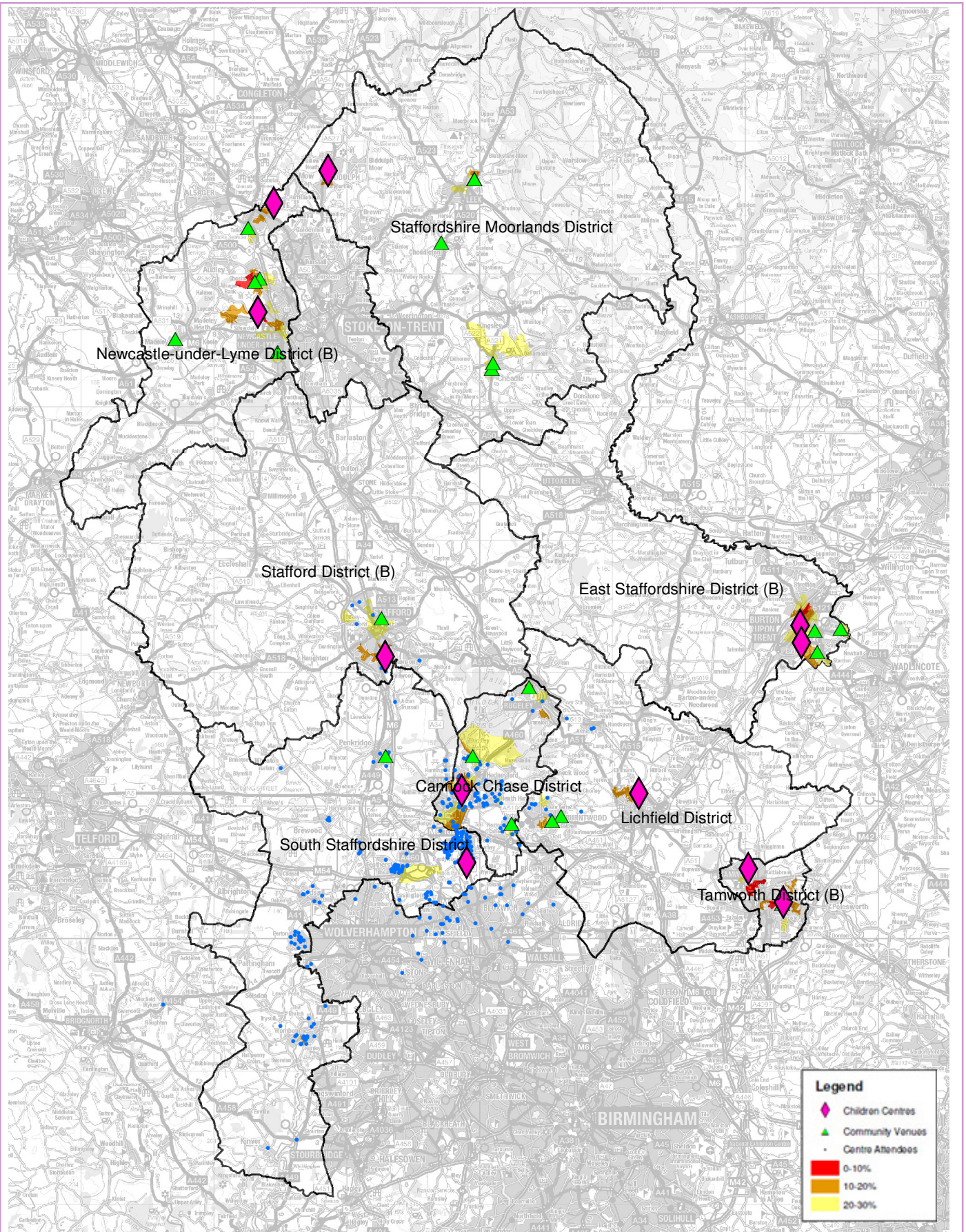
| Ward | 2014 Population (All) | 2014 Population (Age 0-4) | 2014/2015 | | 2015/2016 | |
|---|-----------------------------|---------------------------------|---------------------|------------------------------------|---------------------|------------------------------------|
| | | | Reach Population | % Reach Population (Age 0-4) | Reach Population | % Reach Population (Age 0-4) |
| Bilbrook | 4,249 | 223 | 106 | 42.6% | 100 | 40.2% |
| Brewood and Coven | 6,672 | 277 | 92 | 32.9% | 119 | 42.5% |
| Cheslyn Hay North and Saredon | 4,337 | 211 | 91 | 47.2% | 136 | 70.5% |
| Cheslyn Hay South | 3,704 | 129 | 68 | 50.4% | 87 | 64.4% |
| Codsall North | 4,143 | 188 | 73 | 38.2% | 88 | 46.1% |
| Codsall South | 4,123 | 186 | 43 | 23.8% | 57 | 31.5% |
| Essington | 5,179 | 240 | 104 | 41.3% | 116 | 46.0% |
| Featherstone and Shareshill | 7,164 | 236 | 100 | 42.0% | 124 | 52.1% |
| Great Wyrley Landywood | 4,999 | 259 | 124 | 47.9% | 160 | 61.8% |
| Great Wyrley Town | 6,356 | 338 | 132 | 45.1% | 195 | 66.6% |
| Himley and Swindon | 2,035 | 70 | 17 | 27.4% | 15 | 24.2% |
| Huntington and Hatherton | 5,558 | 384 | 169 | 40.0% | 199 | 47.0% |
| Kinver | 7,210 | 272 | 98 | 35.6% | 86 | 31.3% |
| Pattingham and Patshull | 2,252 | 104 | 35 | 34.0% | 35 | 34.0% |
| Penkridge North East and Acton Trussell | 3,761 | 150 | 49 | 31.2% | 66 | 42.0% |
| Penkridge South East | 4,420 | 204 | 73 | 36.9% | 99 | 50.0% |
| Penkridge West | 2,181 | 81 | 37 | 44.6% | 41 | 49.4% |
| Perton Dippons | 2,020 | 92 | 30 | 36.6% | 29 | 35.4% |
| Perton East | 2,218 | 114 | 38 | 31.4% | 42 | 34.7% |
| Perton Lakeside | 6,446 | 389 | 149 | 37.3% | 145 | 36.3% |
| Trysull and Seisdon | 2,222 | 57 | 30 | 55.6% | 30 | 55.6% |
| Wheaton Aston, Bishopswood and Lapley | 4,192 | 139 | 47 | 36.7% | 54 | 42.2% |
| Wombourne North and Lower Penn | 6,671 | 252 | 79 | 32.8% | 102 | 42.3% |
| Wombourne South East | 3,878 | 139 | 53 | 39.6% | 75 | 56.0% |
| Wombourne South West | 4,736 | 270 | 103 | 39.3% | 122 | 46.6% |
| South Staffordshire | 110,726 | 5,004 | 1,940 | 38.8% | 2,322 | 46.5% |

EARLY YEARS REACH

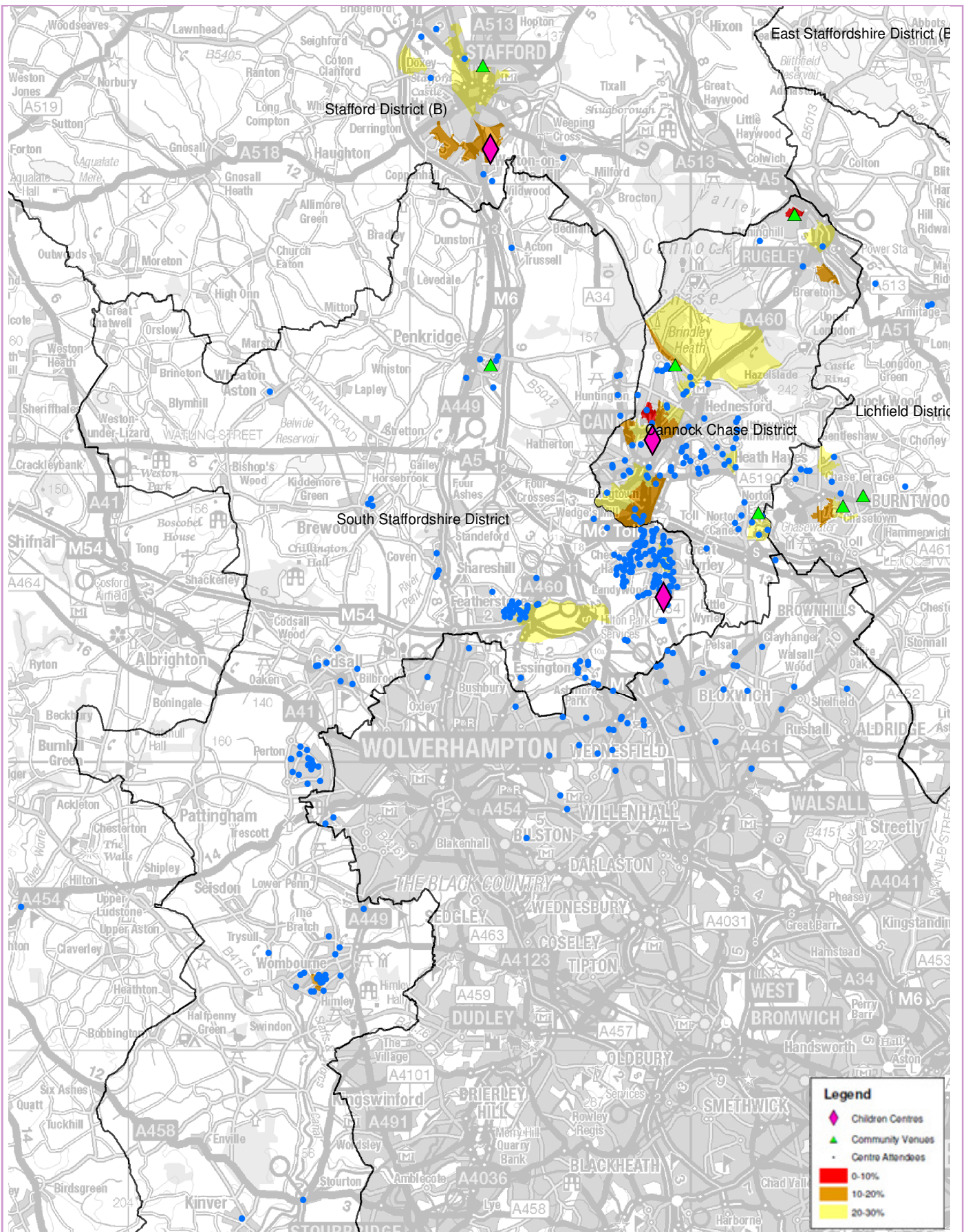
Early Years Reach 0-30%, 2014/15 and 2015/16

| Ward | 2014/2015 | | 2015/2016 | |
|-----------------------------|-------------|---------------------------------|-------------|---------------------------------|
| | % 0-4 Reach | % Reach 0-30% Deprivation | % 0-4 Reach | % Reach 0-30% Deprivation |
| Featherstone and Shareshill | 43 | 18.1% | 61 | 25.6% |
| Great Wyrley Town | 47 | 16.0% | 62 | 21.2% |
| Wombourne South West | 59 | 22.5% | 74 | 55.2% |
| South Staffordshire | 149 | 50.9% | 197 | 67.2% |

CHILDREN'S CENTRE ATTENDANCE 2015/2016



CHILDREN'S CENTRE ATTENDANCE 2015/2016



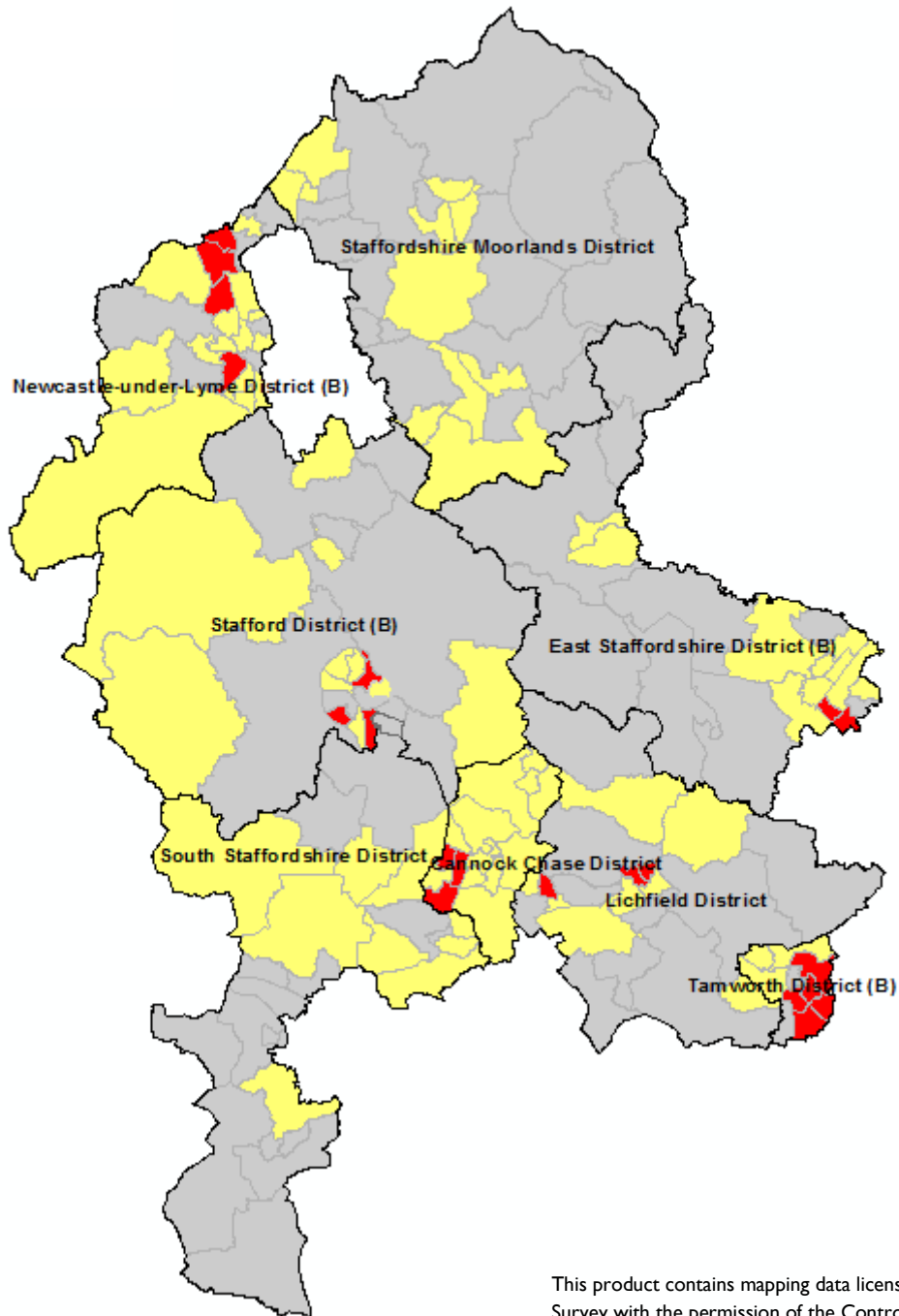
UNDER-18 CONCEPTIONS

Under-18 Teenage Conceptions, 2012-2014

Wards

Statistical Difference to England

- Higher
- Similar
- Suppressed



This product contains mapping data licensed from Ordnance Survey with the permission of the Controller of Her Majesty's Stationary Office©

Crown Copyright and/or database right 2015. All rights reserved. Licence Number 100019422

GENERAL FERTILITY RATES

General Fertility Rates per 1,000 women aged 15-44, 2011-2014

| Ward | 2011-2013 | 2012-2014 | Statistical Difference to England |
|---|-----------|-------------|-----------------------------------|
| Bilbrook | 62 | 47.9 | Lower |
| Brewood and Coven | 52 | 54.6 | Similar |
| Cheslyn Hay North and Saredon | 52 | 48.5 | Lower |
| Cheslyn Hay South | 44 | 40.4 | Lower |
| Codsall North | 55 | 50.4 | Lower |
| Codsall South | 45 | 45.7 | Lower |
| Essington | 61 | 57.2 | Similar |
| Featherstone and Shareshill | 47 | 47.6 | Lower |
| Great Wyrley Landywood | 53 | 55.5 | Similar |
| Great Wyrley Town | 49 | 52.3 | Lower |
| Himley and Swindon | 56 | 53.8 | Similar |
| Huntington and Hatherton | 73 | 72.8 | Higher |
| Kinver | 45 | 46.3 | Lower |
| Pattingham and Patshull | 49 | 55.5 | Similar |
| Penkridge North East and Acton Trussell | 52 | 51.2 | Similar |
| Penkridge South East | 43 | 44.2 | Lower |
| Penkridge West | 57 | 56.0 | Similar |
| Perton Dippons | 43 | 55.6 | Similar |
| Perton East | 47 | 50.4 | Similar |
| Perton Lakeside | 58 | 59.5 | Similar |
| Trysull and Seisdon | 35 | 36.2 | Lower |
| Wheaton Aston, Bishopswood and Lapley | 47 | 47.8 | Lower |
| Wombourne North and Lower Penn | 45 | 40.2 | Lower |
| Wombourne South East | 49 | 55.3 | Similar |
| Wombourne South West | 61 | 65.0 | Similar |
| South Staffordshire | 52 | 52.4 | Lower |
| Staffordshire | 58 | 57.8 | Lower |
| England | 64 | 63.2 | |

LOW BIRTHWEIGHT

Low Birthweight Babies (under 2,500g) 2011-2014

| Ward | 2011-2013 | 2012-2014 | Statistical Difference to England |
|---|-------------|-------------|-----------------------------------|
| Bilbrook | 4.4% | 6.7% | Similar |
| Brewood and Coven | 4.8% | 5.4% | Similar |
| Cheslyn Hay North and Saredon | 4.4% | 5.7% | Similar |
| Cheslyn Hay South | 4.8% | s | |
| Codsall North | 6.7% | 7.2% | Similar |
| Codsall South | 11.5% | 3.5% | Similar |
| Essington | 2.0% | 4.3% | Similar |
| Featherstone and Shareshill | 6.7% | 5.1% | Similar |
| Great Wyrley Landywood | 6.8% | 4.6% | Similar |
| Great Wyrley Town | 6.8% | 8.5% | Similar |
| Himley and Swindon | 14.6% | 12.5% | Similar |
| Huntington and Hatherton | 8.5% | 6.4% | Similar |
| Kinver | 2.2% | s | |
| Pattingham and Patshull | s | s | |
| Penkridge North East and Acton Trussell | 4.7% | 8.4% | Similar |
| Penkridge South East | 5.0% | 5.9% | Similar |
| Penkridge West | s | s | |
| Perton Dippons | 13.0% | 13.8% | Similar |
| Perton East | 5.9% | 7.7% | Similar |
| Perton Lakeside | 8.2% | 5.2% | Similar |
| Trysull and Seisdon | s | s | |
| Wheaton Aston, Bishopswood and Lapley | 9.2% | 3.3% | Similar |
| Wombourne North and Lower Penn | 2.9% | 2.5% | Lower |
| Wombourne South East | s | 3.3% | Similar |
| Wombourne South West | 5.2% | 5.6% | Similar |
| South Staffordshire | 5.8% | 5.3% | Lower |
| Staffordshire | 7.3% | 7.2% | Similar |
| England | 7.4% | 7.3% | |

BREASTFEEDING INITIATION AND PREVALENCE

Breastfeeding Prevalence (6-8 weeks) 2012-2015

| Ward | 2012-2013 | 2014-2015 | Statistical Difference to England |
|---|--------------|--------------|-----------------------------------|
| Bilbrook | 33.3% | 25.0% | Lower |
| Brewood and Coven | 59.1% | 50.0% | Similar |
| Cheslyn Hay North and Saredon | 24.4% | s | |
| Cheslyn Hay South | 24.1% | s | |
| Codsall North | 50.0% | 35.5% | Similar |
| Codsall South | 31.3% | 33.3% | Similar |
| Essington | 15.7% | 27.5% | Lower |
| Featherstone and Shareshill | 41.2% | 25.0% | Lower |
| Great Wyrley Landywood | 25.9% | 15.7% | Lower |
| Great Wyrley Town | 22.0% | 19.0% | Lower |
| Himley and Swindon | s | s | |
| Huntington and Hatherton | 32.9% | 31.3% | Lower |
| Kinver | 46.9% | 35.1% | Similar |
| Pattingham and Patshull | s | s | |
| Penkridge North East and Acton Trussell | 41.7% | 39.1% | Similar |
| Penkridge South East | 48.6% | 32.4% | Similar |
| Penkridge West | 47.1% | 41.2% | Similar |
| Perton Dippons | s | 35.3% | Similar |
| Perton East | s | 44.4% | Similar |
| Perton Lakeside | 34.8% | 40.0% | Similar |
| Trysull and Seisdon | s | s | |
| Wheaton Aston, Bishopswood and Lapley | 45.8% | 44.8% | Similar |
| Wombourne North and Lower Penn | 39.5% | 46.3% | Similar |
| Wombourne South East | 30.8% | 52.0% | Similar |
| Wombourne South West | 20.4% | 24.5% | Lower |
| South Staffordshire | 33.9% | 31.4% | Lower |
| Staffordshire | 32.7% | 33.5% | Lower |
| England | 47.1% | 43.9% | |

THINK2

Think2 Childcare Places, Summer 2016

| Ward | Eligible Families | Take up by child's address | | Take up by address | |
|---|-------------------|----------------------------|------------|--------------------|------------|
| | | Number | Percentage | Number | Percentage |
| Bilbrook | 13 | 8 | 62% | 15 | 115% |
| Brewood and Coven | 10 | 8 | 80% | 4 | 40% |
| Cheslyn Hay North and Saredon | 11 | 10 | 91% | 3 | 27% |
| Cheslyn Hay South | 8 | 3 | 38% | 5 | 63% |
| Codsall North | 15 | 11 | 73% | 11 | 73% |
| Codsall South | 7 | 4 | 57% | 3 | 43% |
| Essington | 22 | 12 | 55% | 10 | 45% |
| Featherstone and Shareshill | 20 | 10 | 50% | 16 | 80% |
| Great Wyrley Landywood | 22 | 19 | 86% | 17 | 77% |
| Great Wyrley Town | 12 | 8 | 67% | 24 | 200% |
| Himley and Swindon | 2 | 1 | 50% | 1 | 50% |
| Huntington and Hatherton | 30 | 27 | 90% | 21 | 70% |
| Kinver | 9 | 4 | 44% | 5 | 56% |
| Pattingham and Patshull | 2 | 1 | 50% | 1 | 50% |
| Penkridge North East and Acton Trussell | 6 | 6 | 100% | 7 | 117% |
| Penkridge South East | 4 | 3 | 75% | 4 | 100% |
| Penkridge West | 4 | 3 | 75% | 5 | 125% |
| Perton Dippons | 3 | 2 | 67% | 9 | 300% |
| Perton East | 2 | 0 | 0% | 0 | 0% |
| Perton Lakeside | 22 | 16 | 73% | 16 | 73% |
| Trysull and Seisdon | 6 | 5 | 83% | 3 | 50% |
| Wheaton Aston, Bishopswood and Lapley | 8 | 2 | 25% | 7 | 88% |
| Wombourne North and Lower Penn | 7 | 3 | 43% | 15 | 214% |
| Wombourne South East | 8 | 2 | 25% | 8 | 100% |
| Wombourne South West | 31 | 21 | 68% | 8 | 26% |
| South Staffordshire | 284 | 189 | 67% | 218 | 77% |

*Data provided is a combination of information from DWP & direct from childcare providers and may have changed by the date of this publication

SUFFICIENCY

Childcare Sufficiency 0-2 years in PVI sector, Summer 2016

| Ward | 0-2 years | | | | 2 years | | | |
|---|--------------------------------|------------|-----------|-------------|--------------------------------|------------|------------|-------------|
| | Number of children in district | Places | Vacancies | Vacancies % | Number of children in district | Places | Vacancies | Vacancies % |
| Bilbrook | 84 | 43 | 4 | 9% | 58 | 55 | 10 | 18% |
| Brewood and Coven | 97 | 4 | 0 | 0% | 56 | 14 | 2 | 14% |
| Cheslyn Hay North and Saredon | 69 | 2 | 0 | 0% | 52 | 9 | 9 | 100% |
| Cheslyn Hay South | 46 | 1 | 0 | 0% | 26 | 20 | 3 | 15% |
| Codsall North | 71 | 8 | 2 | 25% | 44 | 24 | 3 | 13% |
| Codsall South | 70 | 1 | 0 | 0% | 36 | 9 | 3 | 33% |
| Essington | 92 | 10 | 4 | 40% | 56 | 36 | 6 | 17% |
| Featherstone and Sharesill | 98 | 12 | 5 | 42% | 41 | 29 | 6 | 21% |
| Great Wyrley Landywood | 92 | 18 | 1 | 6% | 49 | 37 | 2 | 5% |
| Great Wyrley Town | 105 | 26 | 6 | 23% | 68 | 34 | 8 | 24% |
| Himley and Swindon | 26 | 0 | 0 | - | 13 | 5 | 0 | 0% |
| Huntington and Hatherton | 178 | 3 | 2 | 67% | 68 | 24 | 7 | 29% |
| Kinver | 108 | 12 | 3 | 25% | 55 | 45 | 15 | 33% |
| Pattingham and Patshull | 36 | 0 | 0 | - | 20 | 0 | 0 | - |
| Penkridge North East and Acton Trussell | 57 | 21 | 3 | 14% | 38 | 38 | 10 | 26% |
| Penkridge South East | 66 | 11 | 4 | 36% | 38 | 23 | 7 | 30% |
| Penkridge West | 27 | 21 | 2 | 10% | 27 | 8 | 0 | 0% |
| Perton Dippons | 34 | 28 | 10 | 36% | 19 | 33 | 11 | 33% |
| Perton East | 46 | 1 | 1 | 100% | 27 | 1 | 0 | 0% |
| Perton Lakeside | 152 | 8 | 4 | 50% | 81 | 55 | 18 | 33% |
| Trysull and Seisdon | 18 | 3 | 0 | 0% | 9 | 9 | 2 | 22% |
| Wheaton Aston, Bishopswood and Lapley | 42 | 6 | 1 | 17% | 34 | 8 | 5 | 63% |
| Wombourne North and Lower Penn | 80 | 3 | 1 | 33% | 60 | 19 | 1 | 5% |
| Wombourne South East | 46 | 23 | 8 | 35% | 33 | 32 | 8 | 25% |
| Wombourne South West | 112 | 50 | 14 | 28% | 43 | 26 | 8 | 31% |
| South Staffordshire | 1,852 | 315 | 75 | 24% | 1,051 | 593 | 144 | 24% |

*Data provided is a combination of information from DWP & direct from childcare providers and may have changed by the date of this publication

SUFFICIENCY

Childcare Sufficiency 2-4 years in PVI sector, Summer 2016

| Ward | Think2 | | | | 3-4 years | | | |
|---|--------------------------------|------------|------------|-------------|--------------------------------|--------------|------------|-------------|
| | Number of children in district | Places | Vacancies | Vacancies % | Number of children in district | Places | Vacancies | Vacancies % |
| Bilbrook | 14 | 31 | 18 | 58% | 107 | 77 | 17 | 22% |
| Brewood and Coven | 12 | 7 | 3 | 43% | 127 | 55 | 4 | 7% |
| Cheslyn Hay North and Saredon | 12 | 6 | 4 | 67% | 72 | 35 | 13 | 37% |
| Cheslyn Hay South | 7 | 13 | 3 | 23% | 63 | 42 | 7 | 17% |
| Codsall North | 16 | 19 | 8 | 42% | 76 | 32 | 1 | 3% |
| Codsall South | 7 | 3 | 0 | 0% | 75 | 34 | 3 | 9% |
| Essington | 16 | 18 | 5 | 28% | 104 | 60 | 7 | 12% |
| Featherstone and Sharesill | 18 | 46 | 32 | 70% | 99 | 62 | 16 | 26% |
| Great Wyrley Landywood | 15 | 16 | 3 | 19% | 118 | 91 | 39 | 43% |
| Great Wyrley Town | 19 | 23 | 7 | 30% | 120 | 45 | 5 | 11% |
| Himley and Swindon | 2 | 1 | 0 | 0% | 23 | 12 | 0 | 0% |
| Huntington and Hatherton | 27 | 19 | 4 | 21% | 177 | 40 | 13 | 33% |
| Kinver | 8 | 14 | 5 | 36% | 112 | 89 | 24 | 27% |
| Pattingham and Patshull | 3 | 0 | 0 | - | 47 | 0 | 0 | - |
| Penkridge North East and Acton Trussell | 6 | 24 | 12 | 50% | 62 | 97 | 28 | 29% |
| Penkridge South East | 4 | 27 | 23 | 85% | 94 | 53 | 30 | 57% |
| Penkridge West | 4 | 5 | 0 | 0% | 29 | 16 | 2 | 13% |
| Perton Dippons | 4 | 19 | 10 | 53% | 29 | 51 | 17 | 33% |
| Perton East | 1 | 0 | 0 | - | 48 | 3 | 1 | 33% |
| Perton Lakeside | 24 | 35 | 18 | 51% | 167 | 85 | 26 | 31% |
| Trysull and Seisdon | 6 | 3 | 2 | 67% | 27 | 9 | 5 | 56% |
| Wheaton Aston, Bishopswood and Lapley | 8 | 12 | 4 | 33% | 52 | 34 | 15 | 44% |
| Wombourne North and Lower Penn | 7 | 15 | 1 | 7% | 101 | 60 | 1 | 2% |
| Wombourne South East | 5 | 16 | 8 | 50% | 55 | 65 | 20 | 31% |
| Wombourne South West | 27 | 13 | 5 | 38% | 107 | 35 | 12 | 34% |
| South Staffordshire | 272 | 385 | 175 | 45% | 2,091 | 1,182 | 306 | 26% |

*Data provided is a combination of information from DWP & direct from childcare providers and may have changed by the date of this publication

CHILDHOOD OBESITY

Excess Weight, Children aged 4 - 5 2010 - 2015

| Ward | 2010 - 2013 | 2012 - 2015 | Statistical Difference to England |
|---|--------------|--------------|-----------------------------------|
| Bilbrook | 27.3% | 24.6% | Similar |
| Brewood and Coven | 27.5% | 22.2% | Similar |
| Cheslyn Hay North and Saredon | 30.8% | 30.6% | Higher |
| Cheslyn Hay South | 26.6% | 28.4% | Similar |
| Codsall North | 28.0% | 22.1% | Similar |
| Codsall South | 18.9% | 29.8% | Similar |
| Essington | 25.4% | 25.7% | Similar |
| Featherstone and Shareshill | 29.6% | 28.4% | Similar |
| Great Wyrley Landywood | 29.5% | 30.0% | Higher |
| Great Wyrley Town | 26.3% | 32.1% | Higher |
| Himley and Swindon | s | s | |
| Huntington and Hatherton | 22.5% | 27.3% | Similar |
| Kinver | 21.0% | 23.0% | Similar |
| Pattingham and Patshull | 29.6% | 19.2% | Similar |
| Penkridge North East and Acton Trussell | 16.7% | 19.7% | Similar |
| Penkridge South East | 24.5% | 25.6% | Similar |
| Penkridge West | s | 20.9% | Similar |
| Perton Dippons | s | 21.9% | Similar |
| Perton East | 17.7% | 15.9% | Similar |
| Perton Lakeside | 21.1% | 31.5% | Higher |
| Trysull and Seisdon | 15.8% | 22.5% | Similar |
| Wheaton Aston, Bishopswood and Lapley | 26.0% | 26.4% | Similar |
| Wombourne North and Lower Penn | 21.0% | 22.7% | Similar |
| Wombourne South East | 16.5% | 21.8% | Similar |
| Wombourne South West | 28.5% | 29.0% | Similar |
| South Staffordshire | 24.4% | 26.0% | Higher |
| Staffordshire | 23.4% | 23.6% | Higher |
| England | 22.5% | 22.2% | |

CHILDHOOD OBESITY

Obesity, Children aged 4 - 5 2010/11 - 2012/13

| Ward | 2010 - 2013 | 2012 - 2015 | Statistical Difference to England |
|---|-------------|--------------|-----------------------------------|
| Bilbrook | 21% | 16.7% | Higher |
| Brewood and Coven | 23% | 6.7% | Similar |
| Cheslyn Hay North and Saredon | 23% | 15.3% | Higher |
| Cheslyn Hay South | 17% | 11.4% | Similar |
| Codsall North | 18% | 7.1% | Similar |
| Codsall South | 16% | 10.5% | Similar |
| Essington | 22% | 11.8% | Similar |
| Featherstone and Sharesill | 29% | 13.4% | Similar |
| Great Wyrley Landywood | 21% | 13.8% | Similar |
| Great Wyrley Town | 15% | 10.7% | Similar |
| Himley and Swindon | s | s | |
| Huntington and Hatherton | 23% | 12.3% | Similar |
| Kinver | 17% | 8.7% | Similar |
| Pattingham and Patshull | s | s | |
| Penkridge North East and Acton Trussell | 12% | s | |
| Penkridge South East | 17% | 12.0% | Similar |
| Penkridge West | s | s | |
| Perton Dippons | s | s | |
| Perton East | 19% | s | |
| Perton Lakeside | 16% | 11.8% | Similar |
| Trysull and Seisdon | 26% | s | |
| Wheaton Aston, Bishopswood and Lapley | 19% | 9.2% | Similar |
| Wombourne North and Lower Penn | 16% | 8.2% | Similar |
| Wombourne South East | 20% | 9.0% | Similar |
| Wombourne South West | 23% | 13.0% | Similar |
| South Staffordshire | 20% | 10.6% | Higher |
| Staffordshire | 19% | 9.5% | Similar |
| England | 19% | 9.3% | |

EARLY YEARS FOUNDATION STAGE PROFILE

Pupils achieving Good Level of Development, 2016

| Ward | GLD | Gender | | Free School Meals | | SEN | | |
|---|--------------|--------------|--------------|-------------------|--------------|---------------|--|--------------------|
| | | Male | Female | FSM | Non-FSM | No SEN (N) | Education Health Care Plan or Statement (E) or (S) | SEN Support (K) |
| Bilbrook | 75.6% | 83.3% | 70.4% | 71.4% | 77.4% | 76.9% | | 80.0% |
| Brewood and Coven | 77.2% | 63.2% | 84.2% | 100.0% | 77.8% | 84.0% | | 0.0% |
| Cheslyn Hay North and Saredon | 75.0% | 65.4% | 88.9% | 33.3% | 78.0% | 80.0% | | 0.0% |
| Cheslyn Hay South | 80.0% | 77.3% | 87.5% | 100.0% | 79.3% | 82.8% | | 0.0% |
| Codsall North | 86.8% | 75.0% | 95.5% | 100.0% | 86.1% | 86.5% | | 100.0% |
| Codsall South | 75.0% | 66.7% | 90.0% | 0.0% | 84.0% | 80.8% | 0.0% | 0.0% |
| Essington | 83.0% | 73.1% | 95.2% | | 83.0% | 82.6% | | 100.0% |
| Featherstone and Sharesill | 83.3% | 80.0% | 88.2% | 66.7% | 84.6% | 85.0% | 0.0% | 100.0% |
| Great Wyrley Landywood | 64.4% | 64.0% | 64.7% | 66.7% | 65.5% | 68.5% | 0.0% | 100.0% |
| Great Wyrley Town | 70.7% | 68.3% | 73.5% | 53.8% | 74.2% | 73.6% | 0.0% | 0.0% |
| Himley and Swindon | 50.0% | 40.0% | 60.0% | 0.0% | 62.5% | 71.4% | 0.0% | 0.0% |
| Huntington and Hatherton | 80.2% | 67.6% | 89.4% | 54.5% | 84.3% | 85.1% | 0.0% | 33.3% |
| Kinver | 75.7% | 75.0% | 76.2% | 0.0% | 82.4% | 82.4% | | 0.0% |
| Pattingham and Pashull | 75.0% | 70.0% | 80.0% | | 75.0% | 75.0% | | |
| Penkridge North East and Acton Trussell | 88.0% | 100.0% | 81.3% | 100.0% | 87.0% | 87.5% | | 100.0% |
| Penkridge South East | 83.7% | 77.3% | 90.5% | 66.7% | 85.0% | 85.4% | | 50.0% |
| Penkridge West | 78.6% | 71.4% | 85.7% | 100.0% | 76.9% | 90.9% | | 33.3% |
| Perton Dippons | 72.7% | 62.5% | 100.0% | 100.0% | 70.0% | 100.0% | | 0.0% |
| Perton East | 95.0% | 100.0% | 90.9% | | 95.0% | 95.0% | | |
| Perton Lakeside | 68.3% | 61.8% | 75.9% | 66.7% | 68.3% | 71.4% | 0.0% | 50.0% |
| Trysull and Seisdon | 85.7% | 76.9% | 100.0% | 100.0% | 85.0% | 100.0% | 0.0% | 0.0% |
| Wheaton Aston, Bishopswood and Lapley | 80.0% | 72.7% | 84.2% | 50.0% | 84.6% | 78.6% | | 100.0% |
| Wombourne North and Lower Penn | 81.6% | 84.2% | 78.9% | 100.0% | 81.1% | 91.2% | | 0.0% |
| Wombourne South East | 74.2% | 53.3% | 93.8% | 50.0% | 75.9% | 78.6% | | 0.0% |
| Wombourne South West | 78.6% | 65.5% | 92.6% | 33.3% | 81.1% | 80.0% | | 60.0% |
| South Staffordshire | 77.3% | | | | | | | |
| Staffordshire | 73.8% | 66.9% | 80.9% | 58.4% | 75.3% | 77.6% | 2.0% | 28.0% |
| England | 69.0% | | | | | | | |