

STAFFORDSHIRE MOORLANDS DISTRICT PROFILE



CONTENTS PAGE

Introduction	3
Overview	
Ward Boundaries	4
Population	5
Vulnerable Groups	6
Household Composition	7
Early Years Reach	8
Conception	
Teenage Pregnancy	9
Births	
Smoking at Delivery and Low Birthweight	10
General Fertility Rates and Live Births	11
0-6 Weeks	
Breastfeeding Initiation and Prevalence	12
1 Year and 2 Year	
Think2	13
Sufficiency	14
Toddler	
NEF	15
Hospital Attendances and Admissions	16
First Day of School	
Childhood Obesity	17
Early Years Foundation Stage Profile	18
Summary	19

INTRODUCTION

The purpose of the Early Years District Profile is to bring together a wide range of indicators for each district. It provides the commissioners with a robust evidence base across a range of health and wellbeing issues to help identify priority areas to target and place services in appropriate areas.

The report pulls together information from various sources to present a picture of the health and wellbeing of children aged 0-4, following through the Best Start Pathway.

The data is presented and displayed at Ward Level with comparisons made with Staffordshire and England. Information used in the report is the latest available at the time of writing.

Health and social needs are complex and it is unlikely that there will be a single factor which is responsible for the particular situation in each local area. Therefore, it is important that no single item of information is treated in isolation. Instead the various pieces of data and evidence should be used together to give a better picture of the needs of children and young people in the local community.

We aim to produce this annually with the next one being due November 2016 to support the Districts with their Local Authority annual conversations.

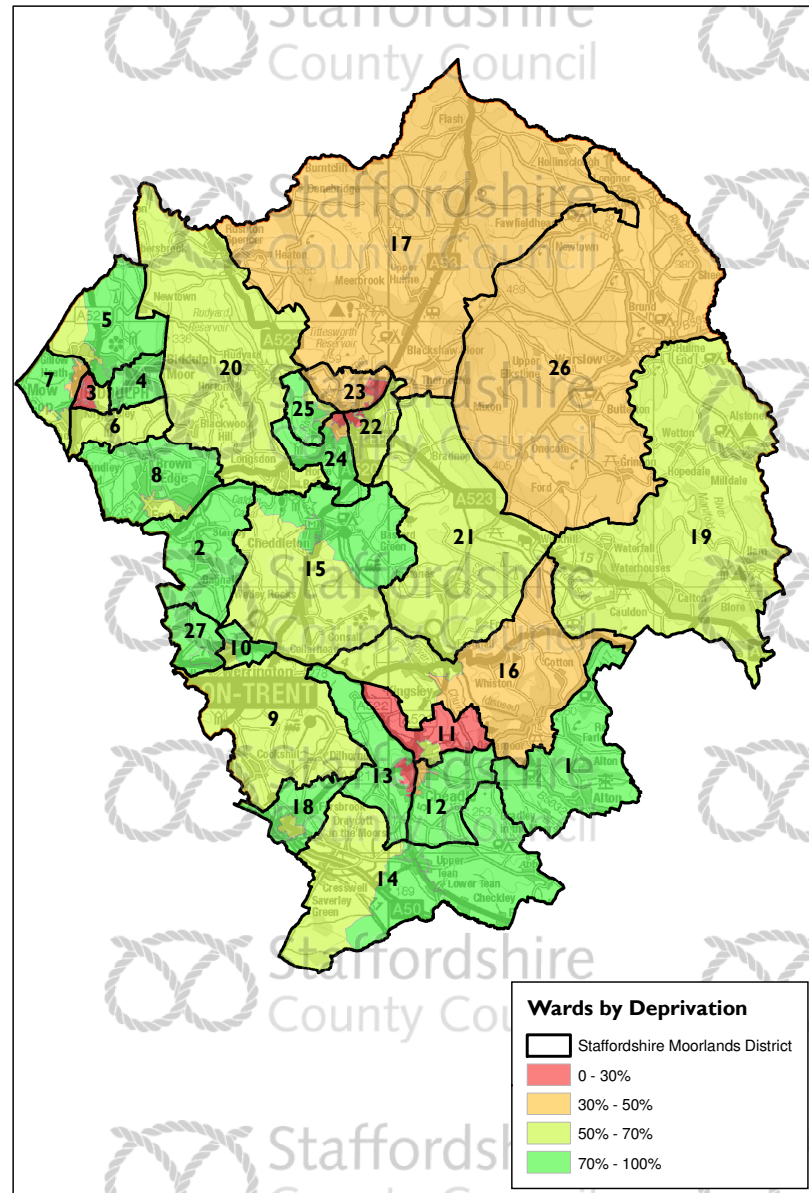
STAFFORDSHIRE MOORLANDS DISTRICT PROFILE

WARD BOUNDARIES

OVERVIEW

Ward Boundaries

- 1 Alton
- 2 Bagnall and Stanley
- 3 Biddulph East
- 4 Biddulph Moor
- 5 Biddulph North
- 6 Biddulph South
- 7 Biddulph West
- 8 Brown Edge and Endon
- 9 Caverswall
- 10 Cellarhead
- 11 Cheadle North East
- 12 Cheadle South East
- 13 Cheadle West
- 14 Checkley
- 15 Cheddleton
- 16 Churnet
- 17 Dane
- 18 Forsbrook
- 19 Hamps Valley
- 20 Horton
- 21 Ipstones
- 22 Leek East
- 23 Leek North
- 24 Leek South
- 25 Leek West
- 26 Manifold
- 27 Werrington



This product contains mapping data licensed from Ordnance Survey with the permission of the Controller of Her Majesty's Stationary Office©

Crown Copyright and/or database right 2015. All rights reserved.
Licence Number 1 000 19422

STAFFORDSHIRE MOORLANDS DISTRICT PROFILE

POPULATION

OVERVIEW

	Total Population 2013	Total under 5 Population 2013	Percentage of Under 5's	Minority Ethnic Group 2011 (%)	Children in low income families, aged under 16 (%) 2015	Child Wellbeing Index (CWI) 2009 weighted score	% in the most deprived CWI national quintile 2009
Alton	1,387	41	3.0%	3.1%	5%	56.8	0.0%
Bagnall and Stanley	1,622	53	3.3%	2.0%	8%	73.4	0.0%
Biddulph East	6,420	462	7.2%	2.7%	27%	153.9	0.0%
Biddulph Moor	1,630	58	3.6%	1.4%	7%	45.5	0.0%
Biddulph North	4,949	194	3.9%	1.6%	5%	56.7	0.0%
Biddulph South	1,655	51	3.1%	1.9%	5%	50.6	0.0%
Biddulph West	5,269	283	5.4%	1.7%	11%	82.1	0.0%
Brown Edge and Endon	4,895	196	4.0%	1.9%	4%	87.2	0.0%
Caverswall	4,969	62	3.7%	1.5%	4%	93.0	0.0%
Cellarhead	3,212	124	3.9%	3.5%	5%	70.1	0.0%
Cheadle North East	3,610	185	5.1%	2.8%	17%	110.9	0.0%
Cheadle South East	3,590	197	5.5%	2.2%	8%	58.0	0.0%
Cheadle West	5,010	232	4.6%	2.9%	12%	46.1	0.0%
Checkley	5,766	291	5.0%	2.1%	9%	81.9	0.0%
Cheddleton	5,411	237	4.4%	2.8%	6%	67.6	0.0%
Churnet	3,172	132	4.2%	1.2%	5%	75.3	0.0%
Dane	1,510	59	3.9%	2.0%	10%	181.8	0.0%
Forsbrook	5,140	224	4.4%	2.0%	11%	63.6	0.0%
Hamps Valley	1,891	82	4.3%	2.4%	3%	108.2	0.0%
Horton	1,858	78	4.2%	2.4%	4%	65.9	0.0%
Ipstones	1,776	61	3.4%	1.7%	4%	75.9	0.0%
Leek East	4,943	239	4.8%	4.3%	12%	68.9	0.0%
Leek North	5,442	356	6.5%	3.5%	25%	163.3	0.0%
Leek South	5,887	365	6.2%	3.5%	14%	105.2	0.0%
Leek West	4,644	215	4.6%	3.4%	8%	56.8	0.0%
Manifold	1,835	76	4.1%	1.5%	4%	153.4	0.0%
Werrington	3,195	134	4.2%	2.2%	4%	38.9	0.0%
Staffordshire Moorlands	97,415	4,688	4.8%	2.5%	11%	88.2	0.0%
Staffordshire	857,007	46,099	5.4%	6.4%	15%	114.3	7.8%
England	56,948,229	3,592,907	6.3%	20.2%	20%	159.3	24.4%

- Overall, Staffordshire Moorlands has a low proportion of under 5's compared to England. At ward level there is very little variance, with Alton having 3.0% and Biddulph East having 7.2%, which is above the England average.
- There are none of the 27 wards in Staffordshire Moorlands with children in the most deprived national quintile for the Child Wellbeing Index.

STAFFORDSHIRE MOORLANDS DISTRICT PROFILE

VULNERABLE GROUPS

OVERVIEW

	Rate per 1,000 CP 2013/14	Rate per 1,000 LAC 2013/14	Rate per 1,000 CIN 2013/14	BRFC Total Involvements (Phase 2)	BRFC Total Involvements with Children 0-4 (Phase 2)
Alton	s	s	26.5	0	0
Bagnall and Stanley	s	s	27.3	0	0
Biddulph East	5.4	10.1	73.8	21	15
Biddulph Moor	s	s	24.7	0	0
Biddulph North	s	s	34.1	1	0
Biddulph South	s	s	42.7	1	0
Biddulph West	s	s	14.5	7	2
Brown Edge and Endon	s	s	19.7	2	0
Caverswall	s	s	40.7	1	0
Cellarhead	10.1	s	31.9	0	0
Cheadle North East	s	s	40.3	2	0
Cheadle South East	s	s	33.0	3	0
Cheadle West	s	s	16.6	5	3
Checkley	s	s	36.5	4	1
Cheddleton	s	7.7	27.9	9	1
Churnet	s	s	-	0	0
Dane	s	s	49.8	1	0
Forsbrook	s	s	32.5	4	2
Hamps Valley	s	17.2	43.1	0	0
Horton	s	s	19.4	0	0
Ipstones	s	19.0	22.8	0	0
Leek East	s	6.8	42.9	7	1
Leek North	4.9	6.5	86.0	46	17
Leek South	s	6.4	65.4	13	6
Leek West	s	s	33.2	4	0
Manifold	s	s	23.6	1	0
Werrington	s	s	16.7	1	0
Staffordshire Moorlands	2.5	4.4	39.2	133	48
Staffordshire	3.9	5.6	68.5	1,132	543
England	4.2	6	68.5	-	-

- Within Staffordshire Moorlands there are a large number of wards with low numbers of children being subject of a Child Protection Plan and being Looked After as identified by the need to suppress data due to low numbers. There are only 3 wards, all with a rate of children subject of a Child protection Plan above the rate nationally, with the highest being Cellarhead. Similarly there are 7 wards out of 27 with a rate of Looked After children above the Staffordshire rate with 2 wards, Hamps Valley and Ipstones having rates more than 3 times the Staffordshire average.
- The rate of children in Need across Staffordshire Moorlands district varies from 14.5 in Biddulph West to 86.0 in Leek North, giving an overall rate for Moorlands of 39.2 children per 1,000.
- 11.7% of Staffordshire's BRFC families reside in Staffordshire Moorlands of which 36.1% of the children are under the age of 5.
- Leek North has the largest number of families by over two times the ward with next largest number of families, Biddulph East, although the number of children under 5 in these two wards is similar.

Note: BRFC data is broken down using home postcode rather than case holding team

STAFFORDSHIRE MOORLANDS DISTRICT PROFILE

HOUSEHOLD COMPOSITION

OVERVIEW

Household Composition - Families with Dependants, 2011

	Number of all Households	Married Couple		Cohabiting Couple		Lone Parent		Same-Sex Civil		Other Households	
		Number of families	% of all households	Number of families	% of all households	Number of families	% of all households	Number of families	% of all households	Number of families	% of all households
Alton	596	87	14.6%	15	2.5%	22	3.7%	0	0.0%	10	1.7%
Bagnall and Stanley	669	117	17.5%	15	2.2%	25	3.7%	0	0.0%	21	3.1%
Biddulph East	2,505	438	17.5%	183	7.3%	283	11.3%	0	0.0%	61	2.4%
Biddulph Moor	727	115	15.8%	21	2.9%	15	2.1%	0	0.0%	7	1.0%
Biddulph North	2,213	302	13.6%	57	2.6%	57	2.6%	0	0.0%	34	1.5%
Biddulph South	724	98	13.5%	16	2.2%	17	2.3%	0	0.0%	11	1.5%
Biddulph West	2,359	305	12.9%	118	5.0%	134	5.7%	0	0.0%	38	1.6%
Brown Edge and Endon	2,039	337	16.5%	76	3.7%	78	3.8%	0	0.0%	27	1.3%
Caverswall	707	103	14.6%	23	3.3%	30	4.2%	0	0.0%	14	2.0%
Cellarhead	1,376	195	14.2%	59	4.3%	69	5.0%	0	0.0%	18	1.3%
Cheadle North East	1,501	216	14.4%	76	5.1%	106	7.1%	0	0.0%	14	0.9%
Cheadle South East	1,550	239	15.4%	77	5.0%	88	5.7%	0	0.0%	18	1.2%
Cheadle West	2,099	346	16.5%	74	3.5%	102	4.9%	0	0.0%	40	1.9%
Checkley	2,393	438	18.3%	85	3.6%	105	4.4%	0	0.0%	41	1.7%
Cheddleton	2,267	392	17.3%	105	4.6%	86	3.8%	1	0.0%	36	1.6%
Churnet	1,409	218	15.5%	44	3.1%	55	3.9%	0	0.0%	19	1.3%
Dane	623	90	14.4%	27	4.3%	15	2.4%	0	0.0%	23	3.7%
Forsbrook	2,226	333	15.0%	80	3.6%	122	5.5%	0	0.0%	35	1.6%
Hamps Valley	776	126	16.2%	26	3.4%	25	3.2%	0	0.0%	11	1.4%
Horton	739	135	18.3%	17	2.3%	19	2.6%	0	0.0%	15	2.0%
Ipstones	778	102	13.1%	30	3.9%	20	2.6%	1	0.1%	19	2.4%
Leek East	2,331	282	12.1%	84	3.6%	149	6.4%	0	0.0%	30	1.3%
Leek North	2,374	272	11.5%	158	6.7%	191	8.0%	0	0.0%	41	1.7%
Leek South	2,547	350	13.7%	156	6.1%	187	7.3%	0	0.0%	40	1.6%
Leek West	2,074	328	15.8%	80	3.9%	101	4.9%	0	0.0%	30	1.4%
Manifold	823	112	13.6%	21	2.6%	19	2.3%	1	0.1%	16	1.9%
Werrington	1,347	224	16.6%	40	3.0%	51	3.8%	0	0.0%	25	1.9%
Staffordshire Moorlands	41,772	6,300	15.1%	1,763	4.2%	2,171	5.2%	3	0.0%	694	1.7%
Staffordshire	355,263	56,756	16.0%	16,242	4.6%	21,016	5.9%	30	0.01%	6,833	1.9%
England	22,063,368	3,373,005	15.3%	890,780	4.0%	1,573,255	7.1%	2,885	0.01%	584,016	2.6%

Remainder of the population is made up of households with no children

- There is a wide spread of households with children across the wards in Staffordshire Moorlands, ranging from 596 in Alton to 2,547 in Leek South.
- Biddulph East has the largest percentage of lone parent households with children, which nearly double the Staffordshire and district average.
- Biddulph Moor, Biddulph South and Manifold are the wards with the lowest percentages of lone parent households with children.

Early Years Reach, 2014-15

	2013 Population (All)	2013 Population (Age 0-4)	Reach Population	% Reach Population (Age 0-4)
Alton	1,387	41	14	34.1%
Bagnall and Stanley	1,622	53	35	66.0%
Biddulph East	6,420	463	444	95.9%
Biddulph Moor	1,630	58	46	79.3%
Biddulph North	4,949	194	126	64.9%
Biddulph South	1,655	51	29	56.9%
Biddulph West	5,269	283	239	84.5%
Brown Edge and Endon	4,895	196	90	45.9%
Caverswall	1,696	62	23	37.1%
Cellarhead	3,212	124	67	54.0%
Cheadle North East	3,610	185	115	62.2%
Cheadle South East	3,590	197	102	51.8%
Cheadle West	5,010	232	178	76.7%
Checkley	5,766	291	150	51.5%
Cheddleton	5,411	237	137	57.8%
Churnet	3,172	132	102	77.3%
Dane	1,510	59	51	86.4%
Forsbrook	5,140	224	118	52.7%
Hamps Valley	1,891	82	49	59.8%
Horton	1,858	78	27	34.6%
Ipstones	1,776	61	43	70.5%
Leek East	4,943	239	173	72.4%
Leek North	5,442	356	320	89.9%
Leek South	5,887	365	261	71.5%
Leek West	4,644	215	152	70.7%
Manifold	1,835	76	35	46.1%
Werrington	3,195	134	67	50.0%
Staffordshire Moorlands	97,415	4,688	3,193	68.1%

- The Early Years Reach across the Staffordshire Moorlands district ranges from 34.1% in Alton to 95.9% in Biddulph East, giving an overall average for the district of 68.1%.
- The overall reach of 68.1% for the Moorlands is within the range considered outstanding by Ofsted.
- Of the 27 wards in the Moorlands, 6 wards are below 51%, the rate deemed good by Ofsted, 9 wards are deemed good as they have a reach of between 51-65%, with the remaining 12 wards deemed outstanding.

TEENAGE PREGNANCY

CONCEPTION

Teenage Pregnancy Rates 2011-2013

	Female population aged 15-17	Number of Under 18 Conceptions	Rate per 1,000 Under 18 Conceptions
Alton	69	-	s
Bagnall and Stanley	101	-	s
Biddulph East	482	17	35.3
Biddulph Moor	64	-	s
Biddulph North	156	7	44.9
Biddulph South	95	-	s
Biddulph West	240	9	37.5
Brown Edge and Endon	249	6	24.1
Caverswall	101	-	s
Cellarhead	145	-	s
Cheadle North East	215	7	32.6
Cheadle South East	188	6	31.9
Cheadle West	283	5	17.7
Checkley	349	8	22.9
Cheddleton	297	5	16.8
Churnet	187	-	s
Dane	106	-	s
Forsbrook	267	7	26.2
Hamps Valley	73	-	s
Horton	100	-	s
Ipstones	80	-	s
Leek East	261	8	30.7
Leek North	266	13	48.9
Leek South	284	13	45.8
Leek West	280	-	s
Manifold	71	-	s
Werrington	147	-	s
Staffordshire Moorlands	5,156	133	25.8
Staffordshire	45,653	1,346	29.5
England	2,830,359	78,153	27.6

- The teenage pregnancy rate in Staffordshire Moorlands is marginally below that of the national average, however, there are 8 wards with a rate above the national average. Although it should be noted that the data for 14 wards has been suppressed due to low numbers.
- The lowest rates of teenage pregnancy can be found in Cheddleton and Cheadle West with rates of 16.8 and 17.7 respectively.

BIRTHS

BIRTHS

General Fertility Rates per 1,000 women aged 15-44, 2011-2013

	2011-2013
Leek North	69
Biddulph West	63
Hamps Valley	63
Leek South	63
Cheadle North East	60
Biddulph East	59
Biddulph Moor	58
Cheadle South East	58
Forsbrook	58
Biddulph North	57
Leek East	55
Dane	54
Manifold	54
Leek West	53
Cheadle West	49
Checkley	48
Cheddleton	48
Churnet	48
Ipstones	47
Bagnall and Stanley	46
Werrington	46
Brown Edge and Endon	43
Horton	43
Cellarhead	42
Caverswall	36
Biddulph South	35
Alton	30
Staffordshire Moorlands	54
Staffordshire	58
England	64

- General Fertility Rates are statistically higher in the Staffordshire Moorlands ward of Leek North, at over 10 per 1,000 more than the Staffordshire figure of 58. All wards within the district have a rate below that of the England average with the exception of Leek North.
- The lowest proportions of general fertility can be found in Alton, Biddulph South and Caverswall.
- Alton, as well as having the lowest general fertility rate also has the lowest number of live births, in comparison to Biddulph East which has a significantly high number of births with an annual average of 91, which is over 20 per 1,000 more than the next ward.

Live Births (annual average) 2010 - 2012

	2010-2012
Biddulph East	91
Leek South	69
Leek North	68
Biddulph West	63
Checkley	54
Leek East	54
Cheddleton	45
Leek West	45
Cheadle West	42
Forsbrook	42
Biddulph North	39
Cheadle North East	38
Brown Edge and Endon	32
Cheadle South East	31
Churnet	28
Cellarhead	20
Werrington	20
Hamps Valley	16
Biddulph Moor	14
Dane	13
Horton	11
Ipstones	11
Bagnall and Stanley	10
Manifold	10
Biddulph South	9
Caverswall	8
Alton	7
Staffordshire Moorlands	882
Staffordshire	8,980
England	689,789

SMOKING AT DELIVERY AND LOW BIRTHWEIGHT

BIRTHS

Smoking at delivery 2010 - 2011

	2010/11
Alton	s
Biddulph Moor	s
Biddulph North	s
Biddulph South	s
Cellarhead	s
Cheadle North East	s
Cheadle South East	s
Cheadle West	s
Checkley	s
Cheddleton	s
Churnet	s
Forsbrook	s
Hamps Valley	s
Horton	s
Ipstones	s
Leek East	s
Leek South	s
Leek West	s
Manifold	s
Werrington	s
Leek North	44%
Biddulph East	24%
Biddulph West	19%
Bagnall and Stanley	-
Brown Edge and Endon	-
Caverswall	-
Dane	-
Staffordshire Moorlands	16%
Staffordshire	14%
England	14%

- In the majority of wards, the percentage of mothers smoking at time of delivery is below the national and Staffordshire average, with only Leek North, Biddulph East and Biddulph West with rates higher than county and national averages.
- The rate of the remaining 24 wards are suppressed due to the low numbers.
- Staffordshire Moorlands also has an low overall percentage of mothers who give birth to babies with a low birthweight. Although Bagnall & Stanley has a large proportion with 18.8% of babies born under 2,500g, which is more than double the Staffordshire average.

Low Birthweight Babies (under 2,500g) 2011-2013

	2011-2013
Alton	s
Biddulph South	s
Caverswall	s
Dane	s
Hamps Valley	s
Horton	s
Manifold	s
Cheadle South East	3.8%
Forsbrook	4.4%
Cheddleton	4.8%
Cellarhead	5.1%
Cheadle North East	5.2%
Biddulph North	5.5%
Checkley	5.5%
Leek South	5.8%
Cheadle West	6.1%
Biddulph East	7.5%
Biddulph Moor	7.7%
Ipstones	7.9%
Leek East	8.3%
Leek North	8.4%
Leek West	8.8%
Brown Edge and Endon	9.0%
Churnet	9.1%
Biddulph West	9.9%
Werrington	12.3%
Bagnall and Stanley	18.8%
Staffordshire Moorlands	6.7%
Staffordshire	7.3%
England	7.4%

BREASTFEEDING INITIATION AND PREVALENCE

0 - 6 WEEKS

Breastfeeding Initiation 2011 - 2012

	2011/2012
Alton	100%
Churnet	86%
Biddulph Moor	80%
Forsbrook	79%
Leek South	75%
Werrington	72%
Biddulph North	71%
Cheadle West	71%
Cheddleton	71%
Checkley	70%
Leek West	63%
Biddulph West	61%
Cellarhead	54%
Biddulph East	50%
Cheadle North East	48%
Cheadle South East	45%
Leek North	39%
Biddulph South	s
Hamps Valley	s
Horton	s
Ipstones	s
Leek East	s
Manifold	s
Bagnall and Stanley	-
Brown Edge and Endon	-
Caverswall	-
Dane	-
Staffordshire Moorlands	62%
Staffordshire	60%
England	74%

- The percentage of mothers who take up breastfeeding at birth in Staffordshire Moorlands district is higher than the national average of 74% for 5 wards, but higher than the Staffordshire average 12 wards, with Leek North significantly lower at 39%.
- Although very low numbers of mothers take up breastfeeding at birth in Dane ward (as evidenced by suppressed numbers), 75.0% of mothers are breastfeeding at 6-8 weeks. A similar situation is evident in Ipstones and Leek East.
- The ward of Leek North shows the smallest drop in breastfeeding between birth and prevalence at 6-8 weeks with a percentage change of just 6 percentage points.
- Breastfeeding prevalence in the Staffordshire Moorlands district is above the average for Staffordshire and England.
- In Alton and Werrington wards mothers who breastfeed at birth do not continue to breastfeed past 6-8 weeks.

Breastfeeding Prevalence (6-8 weeks) 2012-2013

	2012-2013
Dane	75.0%
Biddulph Moor	63.6%
Ipstones	60.0%
Biddulph North	59.0%
Churnet	52.4%
Checkley	50.9%
Biddulph West	48.9%
Leek West	48.9%
Cheadle West	48.8%
Cheddleton	47.4%
Leek East	45.8%
Forsbrook	43.4%
Leek South	42.6%
Cellarhead	42.1%
Cheadle North East	35.9%
Leek North	32.8%
Biddulph East	30.7%
Cheadle South East	27.5%
Alton	s
Bagnall and Stanley	s
Biddulph South	s
Brown Edge and Endon	s
Caverswall	s
Hamps Valley	s
Horton	s
Manifold	s
Werrington	s
Staffordshire Moorlands	43.6%
Staffordshire	32.7%
England	47.1%

STAFFORDSHIRE MOORLANDS DISTRICT PROFILE

THINK2

1 YEAR AND 2 YEAR

Think2 Childcare Places, Summer 2015

*Data provided is a combination of information from DWP & direct from childcare providers and may have changed by the date of this publication

	Eligible Families	Think2 childcare places		
		All	Ofsted good/outstanding	Vacancies in good/outstanding
Alton	1	0	0	0
Bagnall and Stanley	3	16	16	14
Biddulph East	53	36	36	9
Biddulph Moor	4	0	0	0
Biddulph North	14	10	2	2
Biddulph South	2	25	25	1
Biddulph West	20	34	24	4
Brown Edge and Endon	7	21	17	6
Caverswall	1	1	1	0
Cellarhead	5	0	0	0
Cheadle North East	13	0	0	0
Cheadle South East	10	17	14	8
Cheadle West	18	47	47	26
Checkley	13	73	67	52
Cheddleton	8	13	10	1
Churnet	8	5	5	4
Dane	3	0	0	0
Forsbrook	13	67	67	40
Hamps Valley	4	11	11	7
Horton	2	12	12	10
Ipstones	4	9	9	0
Leek East	23	68	68	26
Leek North	44	26	26	5
Leek South	25	6	6	0
Leek West	8	21	21	10
Manifold	4	13	12	3
Werrington	1	7	0	0
Staffordshire Moorlands	311	538	496	228

Think2 Childcare Place No Take-up 02/11/2015

	No Take-up
Alton	1
Bagnall and Stanley	1
Biddulph East	7
Biddulph Moor	0
Biddulph North	0
Biddulph South	0
Biddulph West	2
Brown Edge and Endon	2
Caverswall	0
Cellarhead	1
Cheadle North East	3
Cheadle South East	2
Cheadle West	4
Checkley	2
Cheddleton	0
Churnet	0
Dane	3
Forsbrook	0
Hamps Valley	0
Horton	2
Ipstones	0
Leek East	1
Leek North	2
Leek South	2
Leek West	1
Manifold	2
Werrington	0

*Data provided is from the most recent full term of take up and may have changed since this publication

Of the 311 families who are eligible for a Think2 place, 10% of families have not taken up the place.

There are 10 wards across Staffordshire Moorlands which have take-up of 100%.

STAFFORDSHIRE MOORLANDS DISTRICT PROFILE

SUFFICIENCY

1 YEAR 2 YEAR AND TODDLER

Childcare Sufficiency 0-5 years in PVI sector, Summer 2015

*The data provided is a snapshot of occupancy and vacancy data taken in summer term 2015 and may have changed by the time of this publication.

	0-2 years			2 years			Think2			3-4 years		
	Places	Vacancies	Vacancies %	Places	Vacancies	Vacancies %	Places	Vacancies	Vacancies %	Places	Vacancies	Vacancies %
Alton	0	0	-	0	0	-	0	0	-	8	0	0%
Bagnall and Stanley	2	0	0%	12	0	0%	16	14	88%	32	8	25%
Biddulph East	12	0	0%	26	0	0%	36	9	25%	36	0	0%
Biddulph Moor	0	0	-	0	0	-	0	0	-	0	0	-
Biddulph North	1	0	0%	11	3	27%	10	5	50%	29	3	10%
Biddulph South	11	3	27%	40	6	15%	25	1	4%	33	10	30%
Biddulph West	10	1	10%	37	9	24%	34	7	21%	33	6	18%
Brown Edge and Endon	45	15	33%	68	10	15%	21	8	38%	100	6	6%
Caverswall	3	1	33%	8	2	25%	1	0	0%	18	2	11%
Cellarhead	3	1	33%	8	2	25%	0	0	-	20	9	45%
Cheadle North East	0	0	-	0	0	-	0	0	-	0	0	-
Cheadle South East	9	2	22%	21	4	19%	17	8	47%	31	6	19%
Cheadle West	24	7	29%	39	8	21%	47	26	55%	113	28	25%
Checkley	27	16	59%	80	12	15%	73	55	75%	130	28	22%
Cheddleton	22	4	18%	36	2	6%	13	2	15%	108	16	15%
Churnet	0	0	-	16	4	25%	5	4	80%	32	4	13%
Dane	0	0	-	0	0	-	0	0	-	0	0	-
Forsbrook	29	4	14%	57	29	51%	67	40	60%	131	26	20%
Hamps Valley	4	0	0%	8	0	0%	11	7	64%	40	18	45%
Horton	6	6	100%	4	2	50%	12	10	83%	19	4	21%
Ipstones	5	0	0%	10	1	10%	9	0	0%	30	4	13%
Leek East	13	1	8%	42	10	24%	68	26	38%	91	8	9%
Leek North	14	3	21%	36	18	50%	26	5	19%	41	20	49%
Leek South	2	1	50%	6	1	17%	6	0	0%	36	5	14%
Leek West	3	1	33%	18	1	6%	21	10	48%	79	3	4%
Manifold	3	1	33%	24	4	17%	13	4	31%	36	3	8%
Werrington	16	5	31%	20	9	45%	7	3	43%	42	15	36%
Staffordshire Moorlands	264	72	27%	627	137	22%	538	244	45%	1,268	232	18%

- There are 162 PVI childcare providers in Staffordshire Moorlands of which 55% provided a response to the sufficiency audit.
- There are 75 PVI childcare providers registered for funded childcare places of which 88% provided a response.
- The current childcare sufficiency shows overall in Staffordshire Moorlands there is a 18% vacancy rate approximately for three and four year olds who are entitled to 15 hours of free childcare. For children requiring a Think2 childcare place there is currently a 45% vacancy rate in Staffordshire Moorlands.

Childcare Take-up in the PVI sector, Summer 2015

Ward	Population of 3 year olds	Take-up in the PVI sector		Places taken in school nurseries by school address
		Number of children	Percentage of children	
Alton	10	11	110%	0
Bagnall and Stanley	16	20	125%	0
Biddulph East	83	68	82%	54
Biddulph Moor	10	7	70%	11
Biddulph North	39	26	67%	26
Biddulph South	11	2	18%	0
Biddulph West	64	37	58%	49
Brown Edge and Endon	45	55	122%	0
Caverswall	11	11	100%	0
Cellarhead	35	23	66%	50
Cheadle North East	32	37	116%	0
Cheadle South East	45	37	82%	0
Cheadle West	52	40	77%	29
Checkley	50	68	136%	4
Cheddleton	48	32	67%	25
Churnet	39	39	67%	0
Dane	18	11	67%	15
Forsbrook	38	64	67%	0
Hamps Valley	18	18	67%	13
Horton	17	9	67%	0
Ipstones	12	14	67%	0
Leek East	40	44	67%	35
Leek North	66	63	67%	26
Leek South	78	83	67%	17
Leek West	37	54	67%	0
Manifold	13	8	67%	13
Werrington	26	13	67%	0
Staffordshire Moorlands	953	894	67%	367

- There are a total of 954 eligible 3 year olds.
- In summer term 2015, 894 children were attending a three year old place in a PVI setting and a further 367 within a school nursery class.
- This means that 93% of three year olds are accessing their nursery education funding in the PVI sector.

*There is no measure for 3 and 4 yr olds in terms of take up because of variation in population data, access to different types of provision and local authorities funding places for children which live outside of their catchment area.

HOSPITAL ATTENDANCES AND ADMISSIONS

TODDLER

A & E Attendances aged 0-4 (rate per 10,000)

	2013/14
Biddulph South	s
Biddulph West	198
Biddulph Moor	211
Biddulph East	222
Werrington	226
Alton	227
Biddulph North	233
Brown Edge and Endon	239
Checkley	250
Cheadle North East	283
Hamps Valley	302
Cheadle South East	317
Churnet	317
Forsbrook	329
Cellarhead	353
Manifold	353
Cheadle West	366
Bagnall and Stanley	367
Horton	400
Caverswall	433
Dane	451
Ipstones	468
Cheddleton	506
Leek West	564
Leek East	641
Leek South	693
Leek North	893
Staffordshire Moorlands	397
Staffordshire	455
England	540

- The rate of children under 5 years of age who attended A & E is below the England rate for the vast majority of wards within the Staffordshire Moorlands district, with 4 wards above the England rate of 540 per 1,000 children.
- Leek North has the highest proportions of A & E attendances at over 300 per 1,000 more than half the rate across England.
- Overall, Staffordshire Moorlands has a low proportion of children under the age of 5 who have been admitted into hospital from unintentional injuries.
- Figures on hospital admissions for children aged 0-4 are only available for 3 of the 27 wards in Staffordshire Moorlands.
- There are 24 wards for which figures have been suppressed due to the low numbers.

Hospital Admissions from unintentional injuries aged 0-4, (rate per 10,000)

	2013/14
Alton	s
Bagnall and Stanley	s
Biddulph Moor	s
Biddulph North	s
Biddulph South	s
Brown Edge and Endon	s
Caverswall	s
Cellarhead	s
Cheadle North East	s
Cheadle South East	s
Cheadle West	s
Checkley	s
Cheddleton	s
Churnet	s
Dane	s
Forsbrook	s
Hamps Valley	s
Horton	s
Ipstones	s
Leek East	s
Leek North	s
Leek West	s
Manifold	s
Werrington	s
Biddulph East	127
Leek South	132
Biddulph West	162
Staffordshire Moorlands	108
Staffordshire	149
England	135

CHILDHOOD OBESITY

FIRST DAY OF SCHOOL

Excess Weight, Children aged 4 - 5 2010/11 - 2012/13

	2010/11 - 2012/13
Alton	s
Bagnall and Stanley	s
Biddulph Moor	s
Biddulph South	s
Caverswall	s
Dane	s
Horton	s
Ipstones	s
Manifold	s
Leek South	19.4%
Checkley	19.5%
Leek West	19.6%
Werrington	20.3%
Brown Edge and Endon	21.5%
Forsbrook	23.1%
Biddulph West	23.5%
Hamps Valley	23.5%
Biddulph North	24.3%
Cellarhead	24.6%
Leek East	24.8%
Biddulph East	26.0%
Cheddleton	26.0%
Cheadle West	26.4%
Leek North	27.4%
Churnet	30.2%
Cheadle South East	31.1%
Cheadle North East	34.3%
Staffordshire Moorlands	24.7%
Staffordshire	23.4%
England	22.5%

- Excess weight for reception aged children is just above the national average in Staffordshire Moorlands, with 13 of the 27 wards in Staffordshire Moorlands having a percentage above that of England.
- Leek South, Checkley and Leek West have the lowest percentages of excess weight with 19.4%, 19.5% and 19.6% respectively.
- Cheadle North East and Cheadle South East have the highest percentages of children with excess weight at more than 10 percentage points above the England average.
- Cheadle South East also has the highest proportion of reception aged children who are obese, at 5 percentage points above the national average of 9%.
- Brown Edge and Leek South have the lowest percentages of obese children in Moorlands with 7% of reception aged children.
- Data for some wards for both measures have been suppressed due to low numbers.

Obesity, Children aged 4 - 5 2010/11 - 2012/13

	2010/11 - 2012/13
Alton	s
Bagnall and Stanley	s
Biddulph Moor	s
Biddulph South	s
Caverswall	s
Cellarhead	s
Dane	s
Hamps Valley	s
Horton	s
Ipstones	s
Manifold	s
Werrington	s
Brown Edge and Endon	7%
Leek South	7%
Biddulph West	8%
Forsbrook	9%
Leek East	9%
Leek West	9%
Biddulph East	10%
Biddulph North	10%
Cheadle West	10%
Checkley	11%
Cheddleton	12%
Cheadle North East	13%
Churnet	13%
Leek North	13%
Cheadle South East	14%
Staffordshire Moorlands	10%
Staffordshire	9%
England	9%

EARLY YEARS FOUNDATION STAGE PROFILE

FIRST DAY OF SCHOOL

Pupils achieving Good Level of Development, 2015

Ward	GLD	Gender		Free School Meals		SEN				
		Male	Female	FSM	Non-FSM	No SEN (N)	School Action (A)	School Action Plus (P)	SEN Support (K)	Statement (S)
Alton	66.7%	50.0%	100.0%	-	91.7%	91.7%	-	-	-	-
Bagnall and Stanley	s	33.3%	88.9%	0.0%	71.4%	66.7%	-	-	-	-
Biddulph East	54.3%	39.6%	75.6%	52.0%	57.5%	57.6%	-	50.0%	-	-
Biddulph Moor	s	90.0%	50.0%	-	83.3%	90.9%	-	-	0.0%	-
Biddulph North	59.0%	68.4%	72.7%	66.7%	71.1%	74.4%	-	-	0.0%	0.0%
Biddulph South	73.7%	66.7%	100.0%	25.0%	88.9%	100.0%	-	-	0.0%	-
Biddulph West	68.6%	67.9%	85.7%	-	80.8%	77.8%	-	-	0.0%	-
Brown Edge and Endon	64.1%	73.7%	80.0%	-	76.9%	81.1%	-	-	0.0%	0.0%
Caverswall	85.7%	75.0%	80.0%	0.0%	87.5%	77.8%	-	-	-	-
Cellarhead	69.0%	72.7%	66.7%	-	69.2%	69.2%	-	-	-	-
Cheadle North East	60.5%	45.5%	85.7%	28.6%	69.0%	62.9%	-	0.0%	-	-
Cheadle South East	58.3%	38.9%	63.6%	0.0%	56.8%	56.8%	-	0.0%	-	0.0%
Cheadle West	67.4%	79.2%	78.3%	20.0%	85.7%	78.7%	-	-	-	-
Checkley	70.7%	60.0%	72.7%	0.0%	64.2%	69.2%	-	0.0%	0.0%	0.0%
Cheddleton	70.9%	63.0%	87.5%	0.0%	77.6%	80.9%	-	0.0%	-	0.0%
Churnet	51.6%	81.3%	100.0%	100.0%	87.5%	88.9%	-	-	-	-
Dane	s	75.0%	75.0%	-	75.0%	81.8%	-	-	0.0%	-
Forsbrook	62.2%	70.0%	78.9%	-	74.4%	80.6%	0.0%	-	-	0.0%
Hamps Valey	68.4%	85.7%	80.0%	100.0%	81.8%	83.3%	-	-	-	-
Horton	61.5%	50.0%	100.0%	100.0%	69.2%	76.9%	-	-	0.0%	-
Ipstones	s	60.0%	100.0%	-	75.0%	100.0%	-	0.0%	-	-
Leek East	76.5%	43.5%	82.4%	100.0%	59.0%	63.2%	-	-	0.0%	0.0%
Leek North	40.8%	45.2%	73.5%	60.0%	60.0%	63.9%	0.0%	-	0.0%	-
Leek South	47.0%	61.3%	77.5%	75.0%	69.8%	76.9%	0.0%	0.0%	0.0%	-
Leek West	58.8%	69.2%	77.3%	100.0%	72.3%	77.3%	-	33.3%	0.0%	-
Manifold	54.5%	100.0%	100.0%	100.0%	100.0%	100.0%	-	-	-	-
Werrington	61.9%	69.2%	92.3%	-	80.8%	80.8%	-	-	-	-

The percentage of children in Staffordshire Moorlands achieving a Good Level of Development in the Early Years is significantly high, with all wards achieving over 50% of pupils with a Good Level of Development.

STAFFORDSHIRE MOORLANDS DISTRICT PROFILE

SUMMARY

Measure	Date	Alton	Bagnall and Stanley	Biddulph East	Biddulph Moor	Biddulph North	Biddulph South	Biddulph West	Brown Edge and Endon	Caverswall	Cellarhead	Cheadle North East	Cheadle South East	Cheadle West	Checkley	Cheddleton	Churnet	Dane	Forsbrook	Hamps Valley	Horton	Ipstones	Leek east	Leek North	Leek South	Leek West	Manifold	Werrington	Staffordshire Moorlands	Staffordshire	England	
Total Population	2013	1,387	1,622	6,420	1,630	4,949	1,655	5,269	4,895	4,696	3,212	3,610	3,590	5,010	5,766	5,411	3,172	1,510	5,140	1,891	1,858	1,776	4,943	5,442	5,887	4,644	1,835	3,195	97,415	8,577,007	56,948,229	
Total Under 5 Population	2013	41	53	463	58	194	51	283	196	62	124	185	197	232	291	237	132	59	224	82	78	61	239	356	365	215	76	134	4,688	46,099	3,592,907	
Percentage Under 5's	2013	3.0%	3.3%	7.2%	3.6%	3.9%	3.1%	5.4%	4.0%	3.7%	3.9%	5.1%	5.5%	4.6%	5.0%	4.4%	4.2%	3.9%	4.4%	4.3%	4.2%	3.4%	4.8%	6.5%	6.2%	4.6%	4.1%	4.2%	4.8%	5.4%	6.3%	
Minority Ethnic Group (%)	2011	3.1%	2.0%	2.7%	1.4%	1.6%	1.9%	1.7%	1.9%	1.5%	3.5%	2.8%	2.2%	2.9%	2.1%	2.8%	1.2%	2.0%	2.0%	2.4%	2.4%	1.7%	4.3%	3.5%	3.5%	3.4%	1.5%	2.2%	2.5%	6.4%	20.2%	
Children in low income families (%)	2015	5%	8%	27%	7%	5%	5%	11%	4%	4%	5%	17%	8%	12%	9%	6%	5%	10%	11%	3%	4%	4%	12%	25%	14%	8%	4%	4%	11%	14.4%	19.2%	
Rate per 1,000 CP	2009	s	s	5.4	s	s	s	s	s	s	10.1	s	s	s	s	s	s	s	s	s	s	s	s	s	4.9	s	s	s	s	2.5	114.3	159.3
Rate per 1,000 LAC	2009	s	s	10.1	s	s	s	s	s	s	s	s	s	s	7.7	s	s	s	17.2	s	19.0	6.8	6.5	6.4	s	s	s	4.4	7.8%	24.4%		
Rate per 1,000 CIN	2013/2014	26.5	27.3	73.8	24.7	34.1	42.7	14.5	19.7	40.7	31.9	40.3	33.0	16.6	36.5	27.9	-	49.8	32.5	43.1	19.4	22.8	42.9	86.0	65.4	33.2	23.6	16.7	39.2	3.9	4.2	
Child Wellbeing Index (CWI) 2009 weighted score	2013/2014	56.8	73.4	153.9	45.5	56.7	50.6	82.1	87.2	93.0	70.1	110.9	58.0	46.1	81.9	67.6	75.3	181.8	63.6	108.2	65.9	75.9	68.9	163.3	105.2	56.8	153.4	38.9	88.2	5.6	6	
% in the most deprived CWI national quintile	2013/2014	0.0%	0.0%	0.0%	0.0%	0.0%	0.0%	0.0%	0.0%	0.0%	0.0%	0.0%	0.0%	0.0%	0.0%	0.0%	0.0%	0.0%	0.0%	0.0%	0.0%	0.0%	0.0%	0.0%	0.0%	0.0%	0.0%	0.0%	0.0%	68.5	68.5	
BRFC Total Involvements (Phase 2)	2015	0	0	21	0	1	1	7	2	1	0	2	3	5	4	9	0	1	4	0	0	0	7	46	13	4	1	1	133	1,132	-	
BRFC Total Involvements with Children 0-4 (Phase2)	2015	0	0	15	0	0	0	2	0	0	0	0	0	3	1	1	0	0	2	0	0	0	1	17	6	0	0	0	48	543	-	
Early Years Reach Population (All)	2013	1,387	1,622	6,420	1,630	4,949	1,655	5,269	4,895	1,696	3,212	3,610	3,590	5,010	5,766	5,411	3,172	1,510	5,140	1,891	1,858	1,776	4,943	5,442	5,887	4,644	1,835	3,195	97,415	-	-	
Early Years Reach Population (Age 0-4)	2013	41	53	463	58	194	51	283	196	62	124	185	197	232	291	237	132	59	224	82	78	61	239	356	365	215	76	134	4,688	-	-	
Reach Population	2013	14	35	444	46	126	29	239	90	23	67	115	102	178	150	137	102	51	118	49	27	43	173	320	261	152	35	67	3,193	-	-	
% Reach Population (Age 0-4)	2013	34.1%	66.0%	95.9%	79.3%	64.9%	56.9%	84.5%	45.9%	37.1%	54.0%	62.2%	51.8%	76.7%	51.5%	57.8%	77.3%	86.4%	52.7%	59.8%	34.6%	70.5%	72.4%	89.9%	71.5%	70.7%	46.1%	50.0%	68.1%	-	-	
Under 18 conceptions (rates per 1,000)	2011-2013	s	s	37.7	s	41.9	s	37.2	23.1	s	s	44.6	25.8	21.7	25.9	16.4	s	s	42.3	s	s	s	48.5	62.0	40.5	20.5	s	s	28.7	29.5	27.6	
General Fertility Rates (per 1,000 women)	2011-2013	30	46	59	58	57	35	63	43	36	42	60	58	49	48	48	48	54	58	63	43	47	55	69	63	53	54	46	54	57.9	63.8	
Number of Live Births (annual average)	2010-2012	7	10	91	14	39	9	63	32	8	20	38	31	42	54	45	28	13	42	16	11	11	54	68	69	45	10	20	882	8,980	689,789	
Smoking at time of delivery (%)	2010/2011	s	-	24%	s	s	s	19%	-	-	s	s	s	s	s	s	s	-	s	s	s	s	s	44%	s	s	s	s	16%	14%	14%	
Low Birthweight Babies (under 2,500g)	2011-2013	s	18.8%	7.5%	7.7%	5.5%	s	9.9%	9.0%	s	5.1%	5.2%	3.8%	6.1%	5.5%	4.8%	9.1%	s	4.4%	s	s	7.9%	8.3%	8.4%	5.8%	8.8%	s	12.3%	6.7%	7.30%	7.40%	
Breastfeeding Initiation (%)	2011/12	100%	-	50%	80%	71%	s	61%	-	-	54%	48%	45%	71%	70%	74%	86%	-	79%	s	s	s	s	39%	75%	63%	s	72%	62%	60%	74%	
Breastfeeding prevalence (6-8 weeks)	2012/2013	s	s	30.7%	63.6%	59.0%	s	48.9%	s	s	42.1%	35.9%	27.5%	48.8%	50.9%	47.4%	52.4%	75.0%	43.4%	s	s	60.0%	45.8%	32.8%	42.6%	48.9%	s	s	43.6%	33.90%	47.10%	
A&E attendances (aged 0-4) (rater per 10,000)	2013/2014	227	367	222	211	233	s	198	239	433	353	283	317	366	250	506	317	451	329	302	400	468	641	893	693	564	353	226	397	455	540	
Hospital admissions from intentional and deliberate injuries (aged 0-4) (rater per 10,000)	2013/2014	s	s	127	s	s	s	162	s	s	s	s	s	s	s	s	s	s	s	s	s	s	s	s	132	s	s	s	108	149	135	
Excess weight (aged 4-5)	2010/11-2012/13	s	s	26.0%	s	24.3%	s	23.5%	21.5%	s	24.6%	34.3%	31.1%	26.4%	19.5%	26.0%	30.2%	s	23.1%	23.5%	s	s	24.8%	27.4%	19.4%	19.6%	s	20.3%	24.7%	23.4%	22.5%	
Obesity (aged 4-5)	2010/11-2012/13	s	s	10%	s	10%	s	8%	7%	s	s	13%	14%	10%	11%	12%	13%	s	9%	s	s	s	9%	13%	7%	9%	s	s	10%	9.5%	9.4%	
Good Level of Development - EYFS (%)	2014	66.7%	s	54.3%	s	59.0%	73.7%	68.6%	64.1%	85.7%	69.0%	60.5%	58.3%	67.4%	70.7%	70.9%	51.6%	s	62.2%	68.4%	61.5%	s	76.5%	40.8%	47.0%	58.8%	54.5%	61.9%	61.0%	64.2%	60.4%	