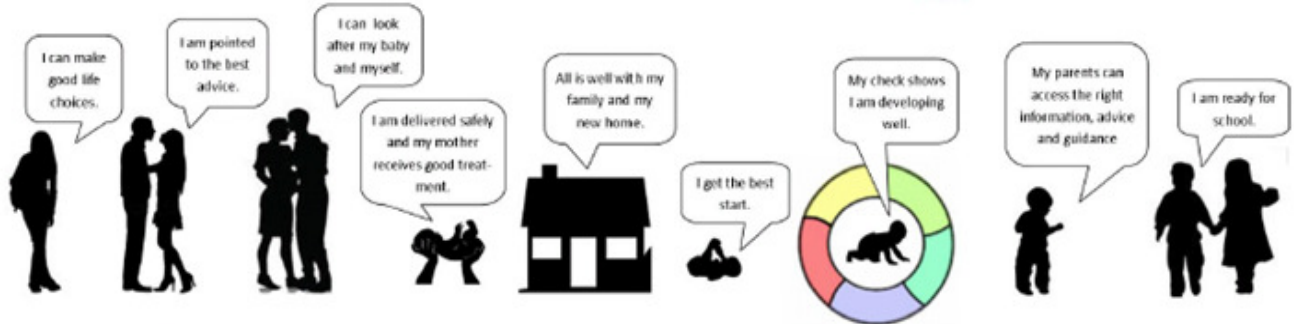


STAFFORDSHIRE MOORLANDS DISTRICT PROFILE

TEENAGER CONCEPTION PREGNANCY BIRTH HOME 0-6 WEEKS 1 YEAR 2 YEARS TODDLER (3-4 YEARS) FIRST DAY OF SCHOOL

★ PHSE ★ CONTRACEPTIVE ADVICE ★ HEALTH PREGNANCY CHECK ★ 14 DAY NEW BIRTH VISIT ★ 6 WEEK CHECK ★ IMMUNISATION ★ 12 MONTH AGES & STAGES QUESTIONNAIRE / THINK 2 ★ NURSERY EDUCATION FUND (3-4 ENTITLEMENT) ★ EYFS KS1



DECEMBER 2016

CONTENTS PAGE

Introduction	3
Summary	4
Population	
Ward Boundaries	6
Under 5 Population.....	7
Household Composition	8
Worklessness.....	9
Children’s Social Care Groups.....	10
Building Resilient Families and Communities (BRFC)	11
Early Years Reach.....	12
Children Centre Attendance Map.....	14
Conception	
Under 18 Conception (District map).....	16
Birth	
General Fertility Rates	17
Low Birthweight	18
0-6 Weeks	
Breastfeeding Prevalence.....	19
1 Year and 2 Year	
Think2	20
Sufficiency.....	21
Toddler	
Sufficiency.....	22
First Day at School	
Childhood Obesity.....	23
Early Years Foundation Stage Profile	25

Contact for Further Information

Report compiled by Operational Intelligence & Performance Team
Claire Makinson - Performance Manager, 01785 277067
Farhana Patel - Performance Officer, 01785 277798

INTRODUCTION

The purpose of the Early Years District Profile is to bring together a wide range of indicators for each district. It provides the commissioners with a robust evidence base across a range of health and wellbeing issues to help identify priority areas to target and place services in appropriate areas.

The report pulls together information from various sources to present a picture of the health and wellbeing of children aged 0-4, following through the Best Start Pathway.

The data is presented and displayed at Ward Level with comparisons made with Staffordshire and England. Information used in the report is the latest available at the time of writing.

Health and social needs are complex and it is unlikely that there will be a single factor which is responsible for the particular situation in each local area. Therefore, it is important that no single item of information is treated in isolation. Instead the various pieces of data and evidence should be used together to give a better picture of the needs of children and young people in the local community.

We aim to produce this annually with the next one being due November 2016 to support the Districts with their Local Authority annual conversations.

SUMMARY

Staffordshire Moorlands district comprises 27 wards, with 9 Lower Super Output Areas of 0-30% deprivation spread across 6 of the wards. The population of children aged 0-4 has seen a drop in the majority of wards between 2013 and 2015 with 20 wards showing a decrease and 6 wards showing an increase. Overall the population of children aged 0-4 within Staffordshire Moorlands has decreased by 0.2 percentage points from 4,688 to 4,480 between 2013 and 2015; this is in line with the slight reduction shown across Staffordshire.

For families with dependents, Married couples are the largest group in the district accounting for 15.1% of households; the proportion of households that are lone parents varies greatly across the wards from 2.1% in Biddulph Moor to 11.3% in Biddulph East giving an average of 5.2% of all households in Staffordshire Moorlands.

The numbers of children living in out of work benefit claimant households has significantly dropped between 2012 and 2015 with a drop of over 50% of households; this drop is seen in 18 of the 27 wards but 8 wards have seen increases, most significantly in Biddulph East and Leek North.

In terms of the Children's Social Care groups, the largest proportion of Children in Need are within the ward of Biddulph East. Leek North has the greatest proportion of Children subject of a Child Protection Plan and these are spread across 10 wards within the district, whereas only 7 wards have children who are Looked After.

The Early Years reach across Staffordshire Moorlands has shown an improvement of nearly 10 percentage points between 2014/15 and 2015/16 equating to nearly 500 additional children aged 0-4. Two wards showed a decline in the reach, Dane and Werrington with decreases of 17.3 and 5.9 percentage points respectively. All other wards showed an improvement with the greatest increase being made in Cheadle North East with a 23.5 percentage point increase. Leek North also saw a large increase of 20.3 percentage points to give the highest reach figure across all districts. Of the 6 wards with areas of 0-30% deprivation, 4 showed an increase in the reach population giving Staffordshire Moorlands a reach figure of 59.9%, a 8.3 percentage point increase from 2014/15.

Attendance at children's centre activities in Staffordshire Moorlands shows that the majority of attendees are from the local areas surrounding centres or community venues. Attendees are also seen to be travelling from other districts, primarily Newcastle and also from Stoke on Trent.

SUMMARY CONT'D

The general fertility rates across Staffordshire Moorlands are statistically lower than England at 53.8 per 1,000 compared to 63.2 for England and 57.8 for Staffordshire. 12 out of 27 wards have levels lower than England with the remaining wards having levels similar to England. 7.2% of babies are born at low birth weight in the district which is statistically similar to the England average with the percentages ranging from 3.9% in Cheddleton to 18.5% in Bagnall & Stanley. The prevalence of breastfeeding as a whole has declined in the district, of the wards where data is available, 11 wards showed a decline and 4 wards showed an improvement.

Data as at Summer 2016 shows the take up of Think2 childcare places is 81% in Staffordshire Moorlands. In terms of sufficiency for Think2 places there is a vacancy rate of 26%, this is comparable with the vacancy rates for all 2 year olds at 23%.

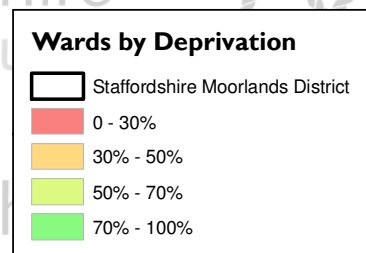
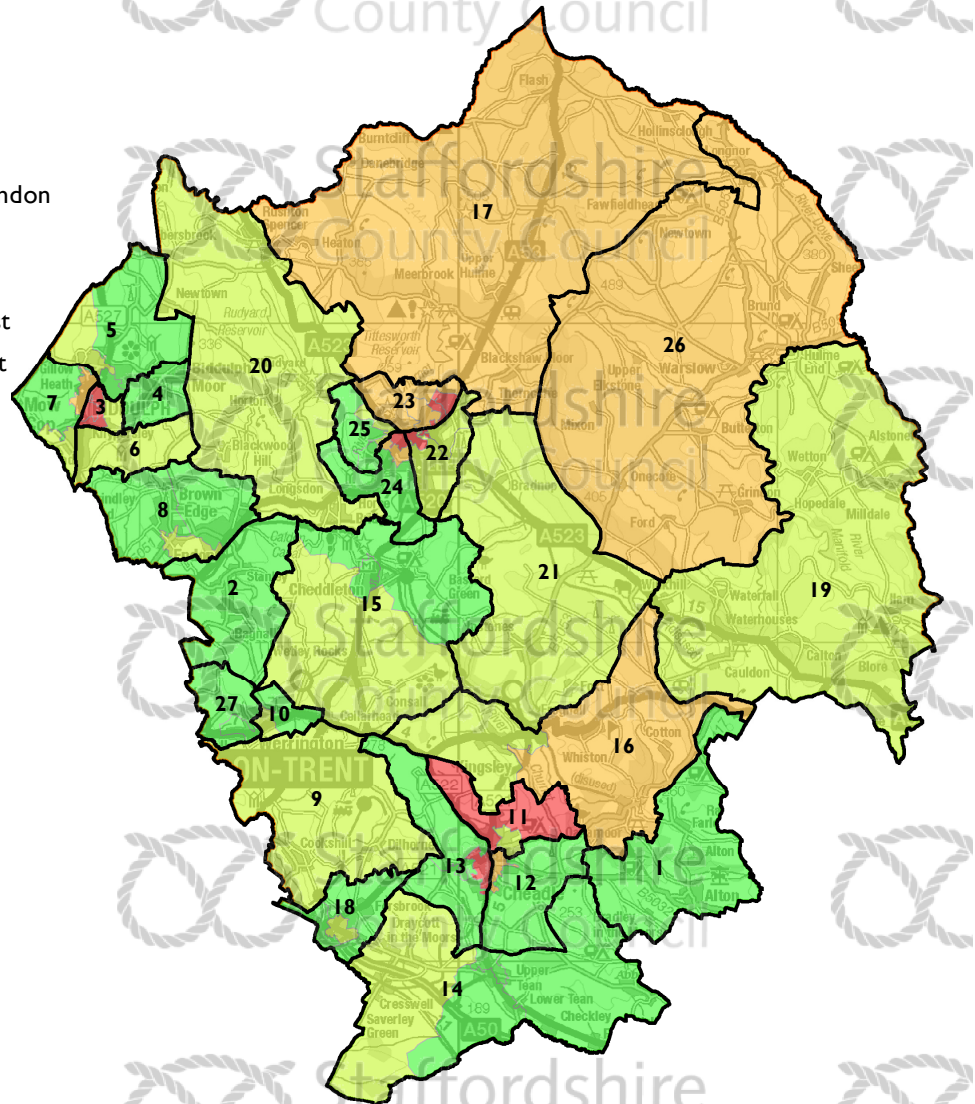
Children in Reception class with excess weight is higher in Staffordshire Moorlands than both the Staffordshire and England average; this is the case in 8 wards and is reflective of the fact that 12 wards have shown an increase in the proportion of children with excess weight at this age. Children of the same age who are classed as obese shows a slight improvement with the rate being similar to that of Staffordshire at 9.6%.

The proportion of children in Staffordshire Moorlands with a Good Level of Development at the Early Years Foundation Stage is similar to that of the Staffordshire average at 73.2%. The GLD rate varies from 33.3% in Manifold to 100% in Alton, although care should be taken due to the small numbers of children included in the cohort. Overall girls perform better than boys but this is not the case in 5 wards where boys outperform girls, namely Biddulph Moor, Biddulph North, Biddulph South, Horton and Manifold.

WARD BOUNDARIES

Ward Boundaries

- 1 Alton
- 2 Bagnall and Stanley
- 3 Biddulph East
- 4 Biddulph Moor
- 5 Biddulph North
- 6 Biddulph South
- 7 Biddulph West
- 8 Brown Edge and Endon
- 9 Caverswall
- 10 Cellarhead
- 11 Cheadle North East
- 12 Cheadle South East
- 13 Cheadle West
- 14 Checkley
- 15 Cheddleton
- 16 Churnet
- 17 Dane
- 18 Forsbrook
- 19 Hamps Valley
- 20 Horton
- 21 Ipstones
- 22 Leek East
- 23 Leek North
- 24 Leek South
- 25 Leek West
- 26 Manifold
- 27 Werrington



This product contains mapping data licensed from Ordnance Survey with the permission of the Controller of Her Majesty's Stationary Office©

Crown Copyright and/or database right 2015. All rights reserved.
Licence Number 1 000 19422

UNDER 5 POPULATION

Proportion of children aged 0-4 , 2013 - 2015

Ward	2013			2014			2015		
	Total Population	Total under 5	Percentage under 5	Total Population	Total under 5	Percentage under 5	Total Population	Total under 5	Percentage under 5
Alton	1,387	41	3.0%	1,405	44	3.1%	1,398	39	2.8%
Bagnall and Stanley	1,622	53	3.3%	1,622	51	3.1%	1,608	50	3.1%
Biddulph East	6,420	462	7.2%	6,467	468	7.2%	6,514	416	6.4%
Biddulph Moor	1,630	58	3.6%	1,623	61	3.8%	1,625	68	4.2%
Biddulph North	4,949	194	3.9%	5,106	213	4.2%	5,164	233	4.5%
Biddulph South	1,655	51	3.1%	1,598	42	2.6%	1,586	36	2.3%
Biddulph West	5,269	283	5.4%	5,262	293	5.6%	5,264	265	5.0%
Brown Edge and Endon	4,895	196	4.0%	4,879	197	4.0%	4,890	206	4.2%
Caverswall	4,969	62	3.7%	1,678	61	3.6%	1,713	70	4.1%
Cellarhead	3,212	124	3.9%	3,206	111	3.5%	3,212	116	3.6%
Cheadle North East	3,610	185	5.1%	3,582	170	4.7%	3,568	173	4.8%
Cheadle South East	3,590	197	5.5%	3,667	199	5.4%	3,661	177	4.8%
Cheadle West	5,010	232	4.6%	4,960	224	4.5%	4,946	215	4.3%
Checkley	5,766	291	5.0%	5,816	280	4.8%	5,762	259	4.5%
Cheddleton	5,411	237	4.4%	5,486	212	3.9%	5,444	202	3.7%
Churnet	3,172	132	4.2%	3,218	126	3.9%	3,227	136	4.2%
Dane	1,510	59	3.9%	1,542	58	3.8%	1,541	51	3.3%
Forsbrook	5,140	224	4.4%	5,114	207	4.0%	5,145	222	4.3%
Hamps Valley	1,891	82	4.3%	1,881	77	4.1%	1,887	72	3.8%
Horton	1,858	78	4.2%	1,883	73	3.9%	1,932	67	3.5%
Ipstones	1,776	61	3.4%	1,810	75	4.1%	1,829	80	4.4%
Leek East	4,943	239	4.8%	4,944	203	4.1%	4,892	208	4.3%
Leek North	5,442	356	6.5%	5,486	335	6.1%	5,615	355	6.3%
Leek South	5,887	365	6.2%	5,918	373	6.3%	5,925	362	6.1%
Leek West	4,644	215	4.6%	4,638	207	4.5%	4,593	203	4.4%
Manifold	1,835	76	4.1%	1,790	78	4.4%	1,792	75	4.2%
Werrington	3,195	134	4.2%	3,182	135	4.2%	3,148	124	3.9%
Staffordshire Moorlands	97,415	4,688	4.8%	97,763	4,573	4.7%	97,881	4,480	4.6%
Staffordshire	857,007	46,099	5.4%	860,165	45,619	5.3%	862,562	45,344	5.3%
England	56,948,229	3,592,907	6.3%	54,316,618	3,430,957	6.3%	54,779,872	3,425,796	6.3%

HOUSEHOLD COMPOSITION

Household Composition - Families with Dependants, 2011

	Number of all Households	Married Couple		Cohabiting Couple		Lone Parent		Same-Sex Civil		Other Households	
		Number of families	% of all households	Number of families	% of all households	Number of families	% of all households	Number of families	% of all households	Number of families	% of all households
Alton	596	87	14.6%	15	2.5%	22	3.7%	0	0.0%	10	1.7%
Bagnall and Stanley	669	117	17.5%	15	2.2%	25	3.7%	0	0.0%	21	3.1%
Biddulph East	2,505	438	17.5%	183	7.3%	283	11.3%	0	0.0%	61	2.4%
Biddulph Moor	727	115	15.8%	21	2.9%	15	2.1%	0	0.0%	7	1.0%
Biddulph North	2,213	302	13.6%	57	2.6%	57	2.6%	0	0.0%	34	1.5%
Biddulph South	724	98	13.5%	16	2.2%	17	2.3%	0	0.0%	11	1.5%
Biddulph West	2,359	305	12.9%	118	5.0%	134	5.7%	0	0.0%	38	1.6%
Brown Edge and Endon	2,039	337	16.5%	76	3.7%	78	3.8%	0	0.0%	27	1.3%
Caverswall	707	103	14.6%	23	3.3%	30	4.2%	0	0.0%	14	2.0%
Cellarhead	1,376	195	14.2%	59	4.3%	69	5.0%	0	0.0%	18	1.3%
Cheadle North East	1,501	216	14.4%	76	5.1%	106	7.1%	0	0.0%	14	0.9%
Cheadle South East	1,550	239	15.4%	77	5.0%	88	5.7%	0	0.0%	18	1.2%
Cheadle West	2,099	346	16.5%	74	3.5%	102	4.9%	0	0.0%	40	1.9%
Checkley	2,393	438	18.3%	85	3.6%	105	4.4%	0	0.0%	41	1.7%
Cheddleton	2,267	392	17.3%	105	4.6%	86	3.8%	1	0.0%	36	1.6%
Churnet	1,409	218	15.5%	44	3.1%	55	3.9%	0	0.0%	19	1.3%
Dane	623	90	14.4%	27	4.3%	15	2.4%	0	0.0%	23	3.7%
Forsbrook	2,226	333	15.0%	80	3.6%	122	5.5%	0	0.0%	35	1.6%
Hamps Valley	776	126	16.2%	26	3.4%	25	3.2%	0	0.0%	11	1.4%
Horton	739	135	18.3%	17	2.3%	19	2.6%	0	0.0%	15	2.0%
Ipstones	778	102	13.1%	30	3.9%	20	2.6%	1	0.1%	19	2.4%
Leek East	2,331	282	12.1%	84	3.6%	149	6.4%	0	0.0%	30	1.3%
Leek North	2,374	272	11.5%	158	6.7%	191	8.0%	0	0.0%	41	1.7%
Leek South	2,547	350	13.7%	156	6.1%	187	7.3%	0	0.0%	40	1.6%
Leek West	2,074	328	15.8%	80	3.9%	101	4.9%	0	0.0%	30	1.4%
Manifold	823	112	13.6%	21	2.6%	19	2.3%	1	0.1%	16	1.9%
Werrington	1,347	224	16.6%	40	3.0%	51	3.8%	0	0.0%	25	1.9%
Staffordshire Moorlands	41,772	6,300	15.1%	1,763	4.2%	2,171	5.2%	3	0.0%	694	1.7%
Staffordshire	355,263	56,756	16.0%	16,242	4.6%	21,016	5.9%	30	0.01%	6,833	1.9%
England	22,063,368	3,373,005	15.3%	890,780	4.0%	1,573,255	7.1%	2,885	0.01%	584,016	2.6%

WORKLESSNESS

Under 5 population living in out-of-work benefit claimant households, 2012-2015

Ward	2012		2013		2014		2015	
	No. of Households	No. of children aged 0-4	No. of Households	No. of children aged 0-4	No. of Households	No. of children aged 0-4	No. of Households	No. of children aged 0-4
Alton	100	55	10	5	10	-	5	-
Bagnall and Stanley	25	5	10	-	10	-	10	-
Biddulph East	60	30	230	145	210	145	180	105
Biddulph Moor	165	110	10	10	10	5	-	-
Biddulph North	30	15	25	10	15	10	15	15
Biddulph South	15	5	10	5	5	-	10	-
Biddulph West	105	85	60	35	55	30	55	30
Brown Edge and Endon	250	185	30	10	25	5	20	10
Caverswall	40	30	10	10	5	-	5	5
Cellarhead	75	55	30	15	30	5	20	5
Cheadle North East	245	185	65	30	65	40	60	35
Cheadle South East	45	30	45	20	45	20	35	15
Cheadle West	30	20	60	25	55	25	55	25
Checkley	15	15	50	30	40	15	40	20
Cheddleton	90	60	35	15	25	15	25	10
Churnet	15	5	25	20	25	20	30	20
Dane	35	10	15	5	10	-	5	-
Forsbrook	20	5	50	20	35	20	40	20
Hamps Valley	35	20	10	5	5	5	5	5
Horton	30	10	5	-	5	-	5	-
Ipstones	70	30	5	5	10	-	5	5
Leek East	45	25	55	35	45	30	45	30
Leek North	50	35	175	115	155	100	145	90
Leek South	40	20	85	60	80	55	65	45
Leek West	35	15	40	25	30	10	30	10
Manifold	35	20	10	5	10	10	10	5
Werrington	45	25	15	5	15	5	15	5
Staffordshire Moorlands	1,745	1,105	1,170	665	1,030	570	935	510
Staffordshire	14,790	9,235	12,875	8,050	11,720	7,500	10,735	6,605
England	1,340,420	839,965	1,268,335	805,100	1,161,325	735,420	1,066,540	669,360

CHILDREN'S SOCIAL CARE GROUPS

Children's Social Care Groups 2015/2016

Ward	Children aged 0-4			Percentage children aged 0-4		
	CIN	CP	LAC	CIN	CP	LAC
Alton	s			2%		
Bagnall and Stanley	s			1%		
Biddulph East	27	s		21%	5%	
Biddulph North	s	s	s	2%	11%	22%
Biddulph West	s	s		2%	11%	
Brown Edge and Endon	s		s	1%		11%
Caverswall	s	s		1%	5%	
Cellarhead	s	s		1%	5%	
Cheadle North East	6	s		5%	16%	
Cheadle South East	s			3%		
Cheadle West	6			5%		
Checkley	5		s	4%		11%
Cheddleton	6			5%		
Dane	s			1%		
Forsbrook	7	s		5%	11%	
Hamps Valley	s			1%		
Horton			s			11%
Ipstones	s		s	2%		11%
Leek East	8	s		6%	5%	
Leek North	21	s		16%	21%	
Leek South	10	s		8%	11%	
Leek West	8		s	6%		22%
Manifold	s			2%		
Werrington	s		s	2%		11%
Staffordshire Moorlands	128	19	9	100%	100%	100%

BUILDING RESILIENT FAMILIES AND COMMUNITIES (BRFC)

Phase 2 Year 1 Eligible Families 2015/16

Ward	Eligible Families	Count of people	Eligible families with children aged 0-4	Count of Children aged 0-4	Percentage of families with children aged 0-4
Alton	0	0	0	0	-
Bagnall and Stanley	1	5	0	0	0.0%
Biddulph East	30	116	13	25	43.3%
Biddulph Moor	0	0	0	0	-
Biddulph North	3	13	0	0	0.0%
Biddulph South	1	5	0	0	0.0%
Biddulph West	4	8	1	1	25.0%
Brown Edge and Endon	2	6	0	0	0.0%
Caverswall	0	0	0	0	-
Cellarhead	0	0	0	0	-
Cheadle North East	3	10	1	2	33.3%
Cheadle South East	4	12	1	1	25.0%
Cheadle West	6	24	2	2	33.3%
Checkley	6	15	2	2	33.3%
Cheddleton	10	33	1	1	10.0%
Churnet	5	17	1	1	20.0%
Dane	0	0	0	0	-
Forsbrook	5	19	2	2	40.0%
Hamps Valley	0	0	0	0	-
Horton	0	0	0	0	-
Ipstones	0	0	0	0	-
Leek East	9	31	1	1	11.1%
Leek North	49	214	13	25	26.5%
Leek South	16	59	5	7	31.3%
Leek West	4	11	0	0	0.0%
Manifold	1	2	0	0	0.0%
Werrington	1	3	0	0	0.0%
Staffordshire Moorlands	160	603	43	70	26.9%

BUILDING RESILIENT FAMILIES AND COMMUNITIES (BRFC)

Phase 2 Year 2 Eligible Families 2016/17 (Apr - Sept)

Ward	Eligible Families	Count of people	Eligible families with children aged 0-4	Count of Children aged 0-4	Percentage of families with children aged 0-4
Alton	0	0	0	0	-
Bagnall and Stanley	0	0	0	0	-
Biddulph East	19	70	2	2	10.5%
Biddulph Moor	2	8	0	0	0.0%
Biddulph North	1	5	1	1	100.0%
Biddulph South	0	0	0	0	-
Biddulph West	5	18	1	1	20.0%
Brown Edge and Endon	2	6	0	0	0.0%
Caverswall	1	2	0	0	0.0%
Cellarhead	2	6	1	1	50.0%
Cheadle North East	7	32	3	3	42.9%
Cheadle South East	5	19	0	0	0.0%
Cheadle West	5	22	0	0	0.0%
Checkley	5	26	1	1	20.0%
Cheddleton	0	0	0	0	-
Churnet	3	11	0	0	0.0%
Dane	0	0	0	0	-
Forsbrook	6	29	2	2	33.3%
Hamps Valley	0	0	0	0	-
Horton	1	4	0	0	0.0%
Ipstones	2	7	0	0	0.0%
Leek East	2	5	0	0	0.0%
Leek North	16	60	2	2	12.5%
Leek South	6	28	0	0	0.0%
Leek West	4	16	0	0	0.0%
Manifold	0	0	0	0	-
Werrington	1	3	0	0	0.0%
Staffordshire Moorlands	95	377	13	13	13.7%

EARLY YEARS REACH

Early Years Reach, 2014/15 and 2015/16

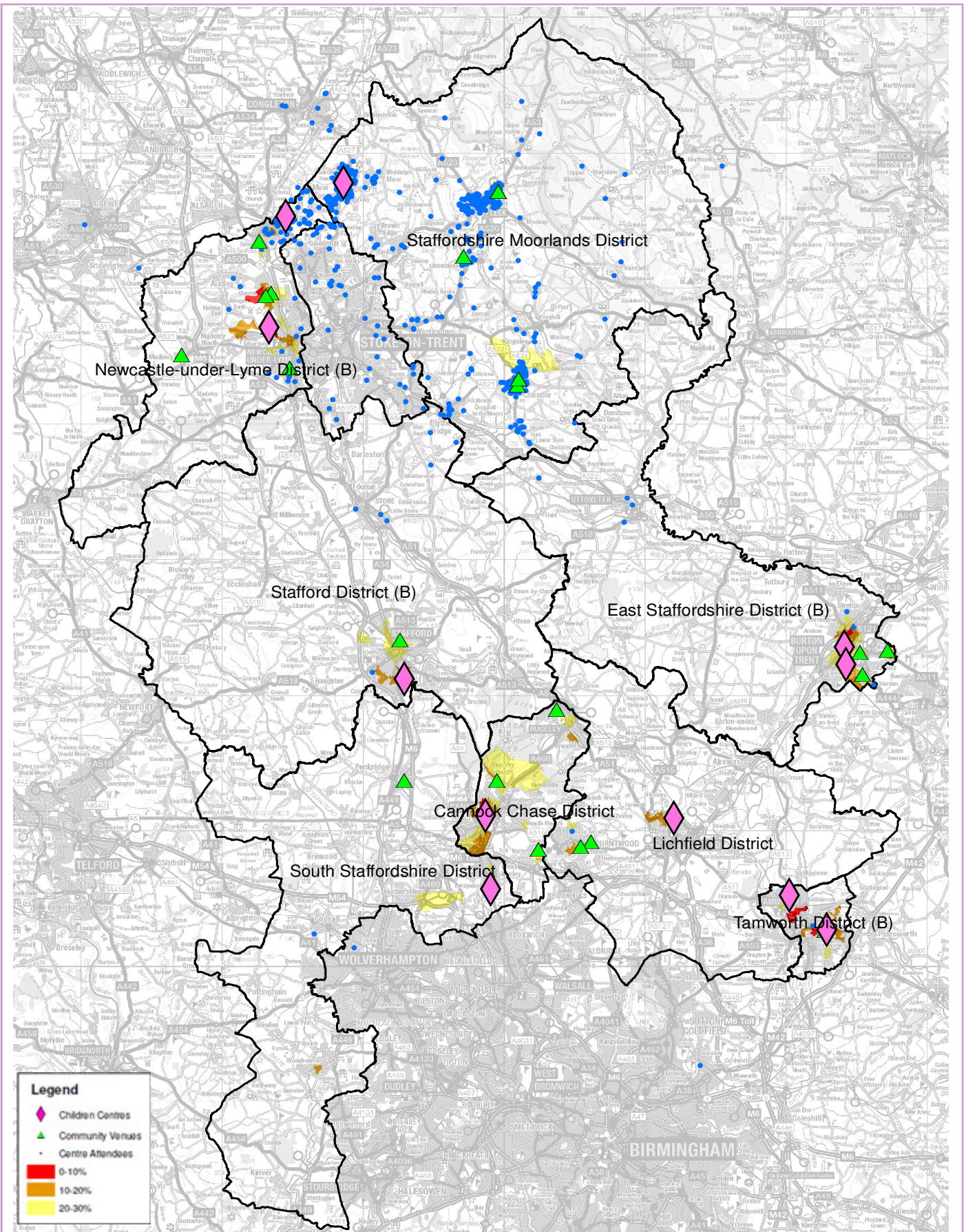
Ward	2014 Population (All)	2014 Population (Age 0-4)	2014/2015		2015/2016	
			Reach Population	% Reach Population (Age 0-4)	Reach Population	% Reach Population (Age 0-4)
Alton	1,405	44	11	25.0%	13	29.5%
Bagnall and Stanley	1,622	51	24	47.1%	27	52.9%
Biddulph East	6,467	468	244	52.1%	324	69.2%
Biddulph Moor	1,623	61	30	49.2%	31	50.8%
Biddulph North	5,106	213	88	41.3%	122	57.3%
Biddulph South	1,598	42	19	45.2%	25	59.5%
Biddulph West	5,262	293	151	51.5%	168	57.3%
Brown Edge and Endon	4,879	197	73	37.1%	95	48.2%
Caverswall	1,678	61	19	31.1%	23	37.7%
Cellarhead	3,206	111	50	45.0%	61	55.0%
Cheadle North East	3,582	170	71	41.8%	111	65.3%
Cheadle South East	3,667	199	72	36.2%	84	42.2%
Cheadle West	4,960	224	109	48.7%	122	54.5%
Checkley	5,816	280	108	38.6%	115	41.1%
Cheddleton	5,486	212	102	48.1%	104	49.1%
Churnet	3,218	126	62	49.2%	74	58.7%
Dane	1,542	58	32	55.2%	22	37.9%
Forsbrook	5,114	207	86	41.5%	107	51.7%
Hamps Valley	1,881	77	33	42.9%	38	49.4%
Horton	1,883	73	19	26.0%	22	30.1%
Ipstones	1,810	75	30	40.0%	32	42.7%
Leek East	4,944	203	116	57.1%	137	67.5%
Leek North	5,486	335	183	54.6%	251	74.9%
Leek South	5,918	373	169	45.3%	220	59.0%
Leek West	4,638	207	98	47.3%	124	59.9%
Manifold	1,790	78	21	26.9%	32	41.0%
Werrington	3,182	135	50	37.0%	42	31.1%
Staffordshire Moorlands	97,763	4,573	2,070	45.3%	2,526	55.2%

EARLY YEARS REACH

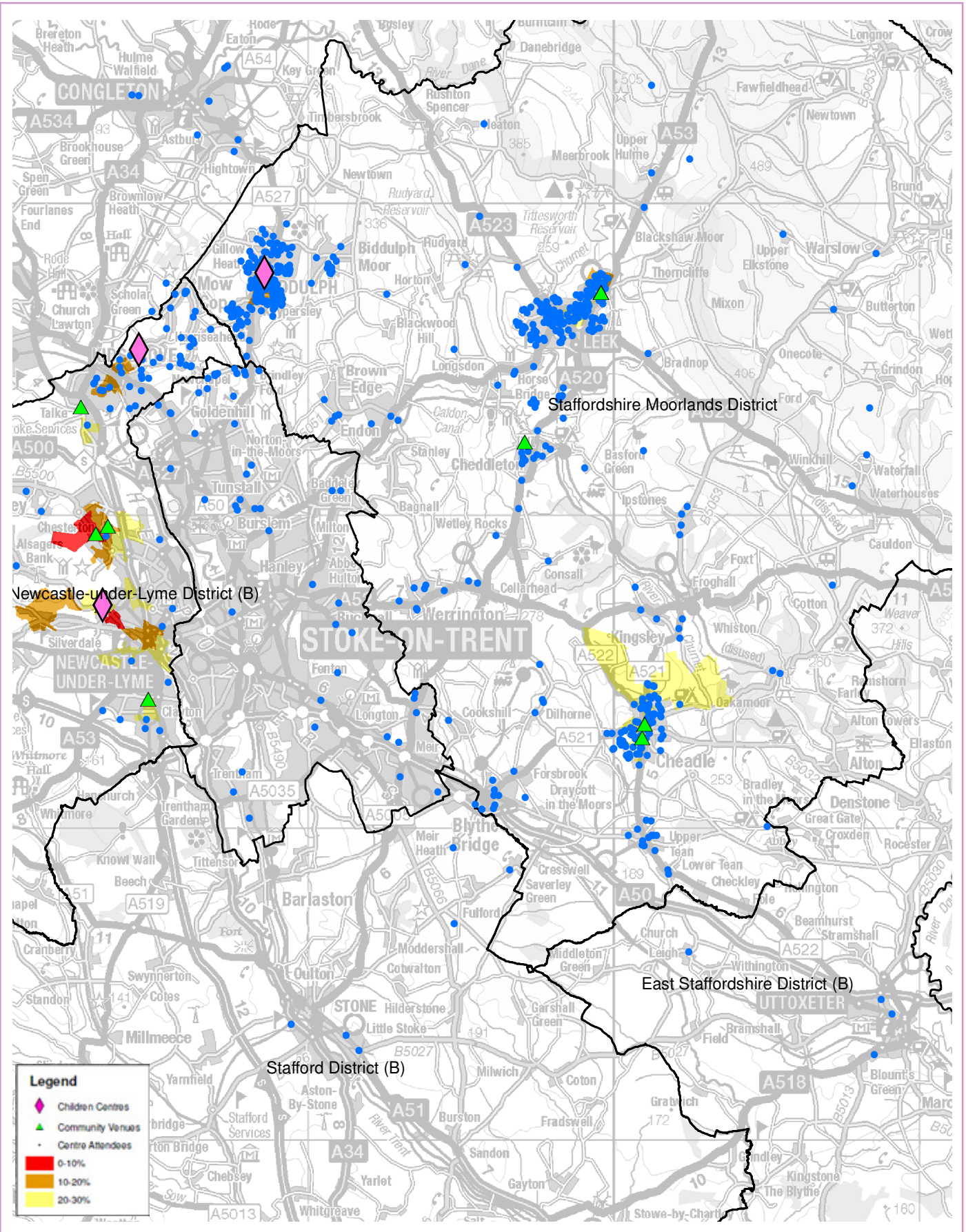
Early Years Reach 0 - 30%, 2014/15 and 2015/16

Ward	2014/2015		2015/16	
	% 0-4 Reach	% Reach 0-30% Deprivation	% 0-4 Reach	% Reach 0-30% Deprivation
Biddulph East Ward	196	41.9%	252	53.8%
Cheadle North East Ward	43	25.3%	81	47.6%
Cheadle South East Ward	35	17.6%		
Cheadle West Ward	51	22.8%	46	20.5%
Leek East Ward	62	30.5%	68	33.5%
Leek North Ward	163	48.7%	157	46.9%
Leek South Ward	49	13.1%	91	24.4%
Staffordshire Moorlands	599	51.6%	695	59.9%

CHILDREN'S CENTRE ATTENDANCE 2015/2016



CHILDREN'S CENTRE ATTENDANCE 2015/2016



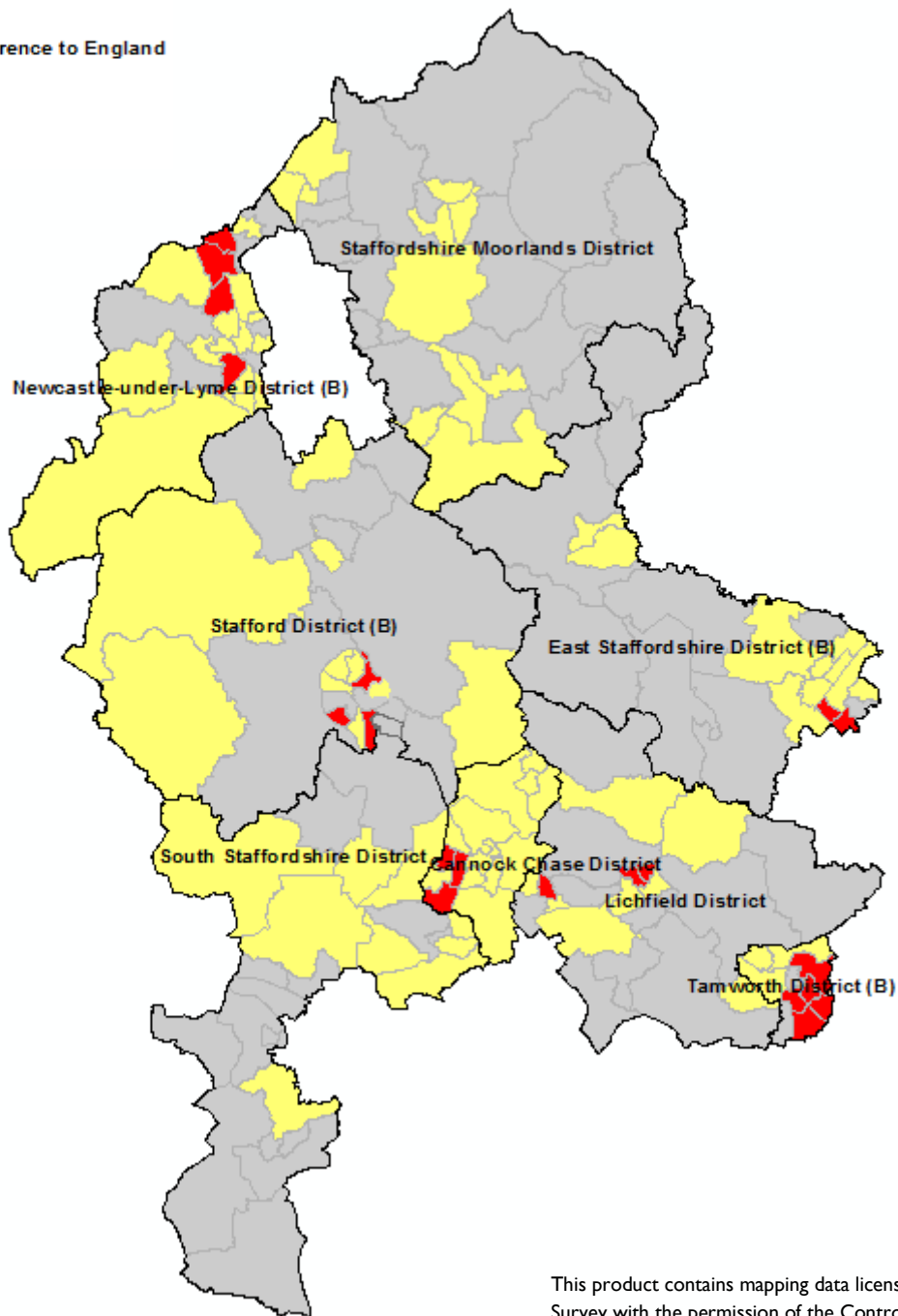
UNDER-18 CONCEPTIONS

Under-18 Teenage Conceptions, 2012-2014

Wards

Statistical Difference to England

- Higher
- Similar
- Suppressed



This product contains mapping data licensed from Ordnance Survey with the permission of the Controller of Her Majesty's Stationary Office©

Crown Copyright and/or database right 2015. All rights reserved. Licence Number 100019422

GENERAL FERTILITY RATES

General Fertility Rates per 1,000 women aged 15-44, 2011-2014

Ward	2011-2013	2012-2014	Statistical Difference to England
Alton	30	34.0	Lower
Bagnall and Stanley	46	37.1	Lower
Biddulph East	59	60.5	Similar
Biddulph Moor	58	51.7	Similar
Biddulph North	57	60.1	Similar
Biddulph South	35	32.4	Lower
Biddulph West	63	61.5	Similar
Brown Edge and Endon	43	47.0	Lower
Caverswall	36	38.7	Lower
Cellarhead	42	37.9	Lower
Cheadle North East	60	65.5	Similar
Cheadle South East	58	60.1	Similar
Cheadle West	49	54.6	Similar
Checkley	48	43.1	Lower
Cheddleton	48	50.0	Lower
Churnet	48	49.2	Lower
Dane	54	41.0	Lower
Forsbrook	58	56.4	Similar
Hamps Valley	63	60.2	Similar
Horton	43	41.1	Lower
Ipstones	47	51.5	Similar
Leek East	55	54.1	Similar
Leek North	69	63.6	Similar
Leek South	63	62.1	Similar
Leek West	53	54.2	Similar
Manifold	54	57.4	Similar
Werrington	46	44.2	Lower
Staffordshire Moorlands	54	53.8	Lower
Staffordshire	58	57.8	Lower
England	64	63.2	

LOW BIRTHWEIGHT

Low Birthweight Babies (under 2,500g) 2011-2014

Ward	2011-2013	2012-2014	Statistical Difference to England
Alton	s	s	
Bagnall and Stanley	18.8%	18.5%	Similar
Biddulph East	7.5%	9.8%	Similar
Biddulph Moor	7.7%	9.1%	Similar
Biddulph North	5.5%	8.8%	Similar
Biddulph South	s	s	
Biddulph West	9.9%	6.9%	Similar
Brown Edge and Endon	9.0%	7.4%	Similar
Caverswall	s	s	
Cellarhead	5.1%	7.7%	Similar
Cheadle North East	5.2%	6.5%	Similar
Cheadle South East	3.8%	6.5%	Similar
Cheadle West	6.1%	7.7%	Similar
Checkley	5.5%	5.5%	Similar
Cheddleton	4.8%	3.9%	Similar
Churnet	9.1%	11.7%	Similar
Dane	s	s	
Forsbrook	4.4%	5.4%	Similar
Hamps Valley	s	s	
Horton	s	9.1%	Similar
Ipstones	7.9%	7.3%	Similar
Leek East	8.3%	6.4%	Similar
Leek North	8.4%	7.0%	Similar
Leek South	5.8%	7.4%	Similar
Leek West	8.8%	8.7%	Similar
Manifold	s	s	
Werrington	12.3%	12.9%	Similar
Staffordshire Moorlands	6.7%	7.2%	Similar
Staffordshire	7.3%	7.2%	Similar
England	7.4%	7.3%	

BREASTFEEDING PREVALENCE

Breastfeeding Prevalence (6-8 weeks) 2012-2015

Ward	2012-2013	2014-2015	Statistical Difference to England
Alton	s	s	
Bagnall and Stanley	s	s	
Biddulph East	30.7%	28.9%	Lower
Biddulph Moor	63.6%	s	
Biddulph North	59.0%	52.8%	Similar
Biddulph South	s	66.7%	Similar
Biddulph West	48.9%	41.2%	Similar
Brown Edge and Endon	s	s	
Caverswall	s	s	
Cellarhead	42.1%	57.1%	Similar
Cheadle North East	35.9%	28.2%	Lower
Cheadle South East	27.5%	28.1%	Lower
Cheadle West	48.8%	45.0%	Similar
Checkley	50.9%	40.0%	Similar
Cheddleton	47.4%	45.9%	Similar
Churnet	52.4%	53.8%	Similar
Dane	75.0%	s	
Forsbrook	43.4%	30.6%	Similar
Hamps Valley	s	s	
Horton	s	66.7%	Similar
Ipstones	60.0%	66.7%	Similar
Leek East	45.8%	47.7%	Similar
Leek North	32.8%	27.5%	Lower
Leek South	42.6%	40.4%	Similar
Leek West	48.9%	43.2%	Similar
Manifold	s	s	
Werrington	s	s	
Staffordshire Moorlands	43.6%	40.7%	Lower
Staffordshire	32.7%	33.5%	Lower
England	47.1%	40.9%	

THINK2

Think2 Childcare Places, Summer 2016

Ward	Eligible Families	Take up by child's address		Take up by provider's address	
		Number	Percentage	Number	Percentage
Alton	-	-	-	-	-
Bagnall and Stanley	1	1	100%	5	500%
Biddulph East	39	35	90%	26	67%
Biddulph Moor	0	1	-	0	-
Biddulph North	2	1	50%	2	100%
Biddulph South	2	9	450%	11	550%
Biddulph West	14	6	43%	11	79%
Brown Edge and Endon	5	1	20%	10	200%
Caverswall	1	6	600%	1	100%
Cellarhead	5	14	280%	1	20%
Cheadle North East	14	8	57%	0	0%
Cheadle South East	10	11	110%	10	100%
Cheadle West	14	6	43%	18	129%
Checkley	11	2	18%	8	73%
Cheddleton	4	8	200%	9	225%
Churnet	11	4	36%	5	45%
Dane	5	9	180%	0	0%
Forsbrook	9	1	11%	21	233%
Hamps Valley	1	1	100%	0	0%
Horton	1	0	0%	2	200%
Ipstones	1	2	200%	6	600%
Leek East	11	8	73%	28	255%
Leek North	36	28	78%	22	61%
Leek South	19	15	79%	0	0%
Leek West	10	8	80%	11	110%
Manifold	5	4	80%	3	60%
Werrington	4	2	50%	10	250%
Staffordshire Moorlands	235	191	81%	220	94%

SUFFICIENCY

Childcare Sufficiency 0-2 years in PVI sector, Summer 2016

Ward	0-2 years				2 years			
	Number of children in district	Places	Vacancies	Vacancies %	Number of children in district	Places	Vacancies	Vacancies %
Alton	16	0	0	-	6	0	0	-
Bagnall and Stanley	15	0	0	-	11	12	6	50%
Biddulph East	172	53	27	51%	93	53	17	32%
Biddulph Moor	22	0	0	-	14	0	0	-
Biddulph North	77	1	0	0%	41	1	0	0%
Biddulph South	14	10	1	10%	6	26	1	4%
Biddulph West	99	10	1	10%	56	25	1	4%
Brown Edge and Endon	72	40	15	38%	34	49	15	31%
Caverswall	26	2	0	0%	8	1	0	0%
Cellarhead	39	4	0	0%	25	6	0	0%
Cheadle North East	76	0	0	-	30	0	0	-
Cheadle South East	76	7	6	86%	32	13	5	38%
Cheadle West	94	23	7	30%	31	35	6	17%
Checkley	95	33	20	61%	49	43	9	21%
Cheddleton	76	3	0	0%	41	21	14	67%
Churnet	45	0	0	-	30	0	0	-
Dane	19	0	0	-	14	1	0	0%
Forsbrook	77	40	7	18%	47	56	19	34%
Hamps Valley	33	0	0	-	17	0	0	-
Horton	20	2	1	50%	11	2	1	50%
Ipstones	31	12	1	8%	13	8	1	13%
Leek East	70	23	3	13%	43	43	6	14%
Leek North	118	13	3	23%	63	28	2	7%
Leek South	141	1	1	100%	72	1	0	0%
Leek West	75	3	0	0%	46	28	5	18%
Manifold	33	6	0	0%	14	7	0	0%
Werrington	43	18	5	28%	26	16	1	6%
Staffordshire Moorlands	1,674	304	98	32%	873	475	109	23%

*The data provided is a snapshot of occupancy and vacancy data taken in summer term 2016 and may have changed by the time of this publication.

SUFFICIENCY

Childcare Sufficiency 2-4 years in PVI sector, Summer 2016

Ward	Think2				3-4 years			
	Number of children in district	Places	Vacancies	Vacancies %	Number of children in district	Places	Vacancies	Vacancies %
Alton	0	0	0	-	22	16	0	0%
Bagnall and Stanley	2	7	2	29%	25	34	6	18%
Biddulph East	39	33	10	30%	203	112	31	28%
Biddulph Moor	0	0	0	-	25	0	0	-
Biddulph North	1	2	0	0%	95	3	1	33%
Biddulph South	1	21	1	5%	22	21	1	5%
Biddulph West	12	11	1	9%	138	87	20	23%
Brown Edge and Endon	7	16	6	38%	91	110	7	6%
Caverswall	1	7	1	14%	27	18	6	33%
Cellarhead	3	7	3	43%	47	45	10	22%
Cheadle North East	16	0	0	-	64	0	0	-
Cheadle South East	12	14	5	36%	91	25	7	28%
Cheadle West	12	36	10	28%	99	121	27	22%
Checkley	8	33	10	30%	136	84	49	58%
Cheddleton	3	25	12	48%	95	76	27	36%
Churnet	10	15	4	27%	51	33	9	27%
Dane	5	0	0	-	25	10	2	20%
Forsbrook	11	42	11	26%	83	122	32	26%
Hamps Valley	1	0	0	-	27	44	13	30%
Horton	0	4	0	0%	42	16	6	38%
Ipstones	1	7	1	14%	31	12	1	8%
Leek East	13	54	18	33%	90	88	9	10%
Leek North	41	25	2	8%	154	63	4	6%
Leek South	19	0	0	-	160	32	6	19%
Leek West	7	16	2	13%	86	63	8	13%
Manifold	4	2	0	0%	31	24	2	8%
Werrington	3	9	1	11%	66	24	8	33%
Staffordshire Moorlands	232	386	100	26%	2,026	1,283	292	23%

*The data provided is a snapshot of occupancy and vacancy data taken in summer term 2016 and may have changed by the time of this publication.

CHILDHOOD OBESITY

Excess Weight, Children aged 4 - 5 2010 - 2015

Ward	2010 - 2013	2012 - 2015	Statistical Difference to England
Alton	s	20.6%	Similar
Bagnall and Stanley	s	s	
Biddulph East	26.0%	27.4%	Higher
Biddulph Moor	s	s	
Biddulph North	24.3%	21.6%	Similar
Biddulph South	s	40.0%	Higher
Biddulph West	23.5%	19.5%	Similar
Brown Edge and Endon	21.5%	15.5%	Similar
Caverswall	s	40.0%	Higher
Cellarhead	24.6%	29.7%	Similar
Cheadle North East	34.3%	30.6%	Higher
Cheadle South East	31.1%	32.4%	Higher
Cheadle West	26.4%	29.0%	Similar
Checkley	19.5%	16.2%	Similar
Cheddleton	26.0%	22.8%	Similar
Churnet	30.2%	35.2%	Higher
Dane	s	21.9%	Similar
Forsbrook	23.1%	24.0%	Similar
Hamps Valley	23.5%	27.5%	Similar
Horton	s	33.3%	Similar
Ipstones	s	33.3%	Similar
Leek East	24.8%	27.8%	Similar
Leek North	27.4%	28.1%	Higher
Leek South	19.4%	19.9%	Similar
Leek West	19.6%	21.3%	Lower
Manifold	s	27.0%	Higher
Werrington	20.3%	27.7%	Similar
Staffordshire Moorlands	24.7%	24.8%	Higher
Staffordshire	23.4%	23.6%	Higher
England	22.5%	22.2%	

CHILDHOOD OBESITY

Obesity, Children aged 4 - 5 2010/11 - 2012/13

Ward	2010 - 2013	2012 - 2015	Statistical Difference to England
Alton	s	s	
Bagnall and Stanley	s	s	
Biddulph East	10%	12.4%	Similar
Biddulph Moor	s	s	
Biddulph North	10%	8.6%	Similar
Biddulph South	s	s	
Biddulph West	8%	8.8%	Similar
Brown Edge and Endon	7%	s	
Caverswall	s	20.0%	Higher
Cellarhead	s	8.1%	Similar
Cheadle North East	13%	12.6%	Similar
Cheadle South East	14%	13.0%	Similar
Cheadle West	10%	11.5%	Similar
Checkley	11%	7.5%	Similar
Cheddleton	12%	6.9%	Similar
Churnet	13%	13.2%	Similar
Dane	s	s	
Forsbrook	9%	8.8%	Similar
Hamps Valley	s	s	
Horton	s	s	
Ipstones	s	s	
Leek East	9%	13.0%	Similar
Leek North	13%	11.3%	Similar
Leek South	7%	9.2%	Similar
Leek West	9%	5.9%	Similar
Manifold	s	s	
Werrington	s	s	
Staffordshire Moorlands	10%	9.6%	Similar
Staffordshire	9%	9.5%	Similar
England	9%	9.3%	

FIRST DAY AT SCHOOL

EARLY YEARS FOUNDATION STAGE PROFILE

Pupils achieving Good Level of Development, 2016

Ward	GLD	Gender		Free School Meals		SEN		
		Male	Female	FSM	Non-FSM	No SEN (N)	Education Health Care Plan or Statement (E) or (S)	SEN Support (K)
Alton	100.0%	100.0%	100.0%		100.0%	100.0%		100.0%
Bagnall and Stanley	73.3%	60.0%	80.0%		73.3%	78.6%	0.0%	
Biddulph East	67.4%	70.8%	63.6%	47.1%	72.0%	71.4%		28.6%
Biddulph Moor	69.2%	70.0%	66.7%		69.2%	69.2%		
Biddulph North	78.9%	81.0%	76.5%	0.0%	81.1%	81.1%		0.0%
Biddulph South	85.7%	100.0%	66.7%		85.7%	85.7%		
Biddulph West	74.1%	70.0%	79.2%	100.0%	72.0%	74.5%	0.0%	
Brown Edge and Endon	75.6%	70.6%	78.6%	100.0%	75.0%	77.3%	0.0%	
Caverswall	85.0%	75.0%	100.0%		85.0%	85.0%		
Cellarhead	85.0%	71.4%	92.3%		85.0%	85.0%		
Cheadle North East	76.9%	71.4%	83.3%	100.0%	76.0%	79.2%		50.0%
Cheadle South East	62.2%	53.8%	81.8%		62.2%	65.7%	0.0%	0.0%
Cheadle West	74.5%	62.5%	85.2%	100.0%	74.0%	80.9%	0.0%	0.0%
Checkley	86.4%	81.8%	90.9%	100.0%	85.7%	87.5%	0.0%	
Cheddleton	82.6%	70.4%	100.0%	100.0%	82.2%	82.6%		
Churnet	71.9%	61.5%	78.9%	0.0%	74.2%	74.2%	0.0%	
Dane	62.5%	50.0%	75.0%	100.0%	60.0%	62.5%		
Forsbrook	64.4%	38.9%	81.5%	100.0%	65.1%	76.3%	0.0%	0.0%
Hamps Valey	71.4%	63.6%	80.0%	0.0%	75.0%	71.4%		
Horton	63.6%	75.0%	57.1%		63.6%	77.8%	0.0%	
Ipstones	66.7%	40.0%	80.0%		66.7%	71.4%		0.0%
Leek East	75.7%	61.1%	89.5%	0.0%	77.8%	75.7%		
Leek North	71.6%	71.1%	72.0%	46.7%	76.7%	72.9%		50.0%
Leek South	66.3%	60.4%	76.7%	50.0%	68.9%	68.4%		0.0%
Leek West	82.9%	81.5%	85.7%	100.0%	82.1%	82.9%		
Manifold	33.3%	42.9%	25.0%	100.0%	28.6%	35.7%		
Werrington	75.9%	71.4%	80.0%	33.3%	80.0%	77.8%		0.0%
Staffordshire Moorlands	73.2%							
Staffordshire	73.8%	66.9%	80.9%	58.4%	75.3%	77.6%	2.0%	28.0%
England	69.0%							